



## Durable Design - Reliable Results

Durability in design is our top priority, everything else follows. We believe this is accomplished through a constant focus on minimizing complexity, using high quality components and most importantly asking ourselves how we would want the system to be built. Focus on ease of use and maintenance maintains this perspective. Our goal is to become the gold standard for fuel system design by delivering on our promise of durable design and reliable results.

The Ace FuelSafe line was introduced as a safe, reliable and sensible option for the discerning owner/operator who prefers a durably designed system that will safely transfer fuel from point A to B with minimal complexity. Our FuelSafe systems are designed and built by service personnel who have maintained fuel system equipment in the field and have a deep appreciation for reliability and simplicity in fuel system design.

## Cabinet Dispensing Systems:

Ace FuelSafe dispensing & pump cabinets are fabricated with the end user in mind. We understand you may have distinctive requirements for your fuel system, so we design our systems to accommodate our client's unique requirements with durability and ease of maintenance in mind. Each system is designed after our sales engineers consult with you to determine your system requirements. Our sales team will help you determine the appropriate pump size, meter, reel, electrical and filtration requirements for your system. FuelSafe cabinets receive a standard powder coat finish, piano hinge doors and lockable door handles. Ace can include leak detection, lighting, extra reinforcement and electrical controls as needed to make certain your system is complete and ready for service once it shows up on site. Ace can also mate up dispensing cabinets with our fuel storage systems for a complete fuel storage and dispensing system. Please call our sales staff to discuss your unique requirements.



(Aviation Dispensing Cabinet w/ Sloped Hinged Top)



(Aviation Dispensing Cabinet)

### DISPENSING CABINET PACKAGE:

#### Includes:

- Powder Coat Interior & Exterior Finish
- Piano Hinge Doors with Lockable Handle
- Filter w/ Particulate Element

#### Options:

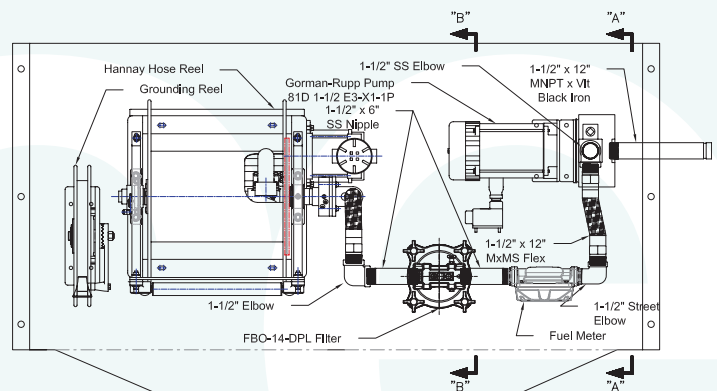
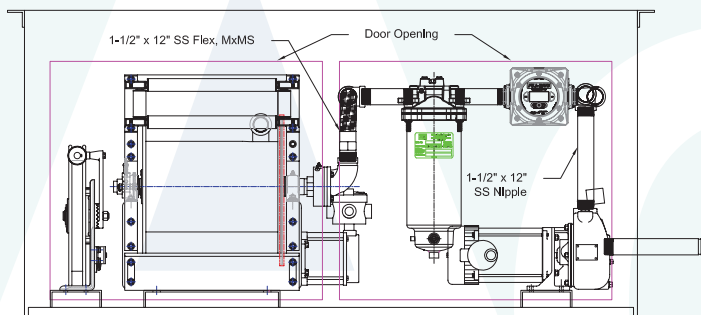
- Pump System (*Specify Voltage and Pump Selection*)
- Water Blocking or Coalescing Element
- Meter (*Specify Digital or Mechanical*)
- Lighting
- Spring Rewind Hose Reel w/ Hose (*Specify Line Size & Length*)
  - Electric Rewind Motor (*Specify Voltage*)
  - Roller Assembly w/ Hose Stop
- Grounding Reel (*Specify Length*)
- Nozzle w/ Swivel



## Ace FuelSafe Cabinet Dispensing Package Specification:

- Powder Coat Finish System inside & out.
- Sturdy Piano Hinge Doors w/ Gasketed Enclosure.
- Lockable Door Hardware w/ Oversized Handles for cold weather operation.
- Reinforcement as needed to support equipment
- As built/ spec sheet holder
- Watertight piping and conduit penetrations
- Ace QC certification

### Examples:



Phone: (800) 426-2880  
E-mail: FuelSafeSystems@acetank.com



**Durable Designs... Reliable Results**

**www.acetank.com**