

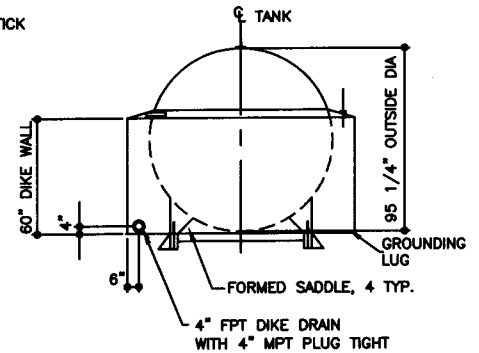
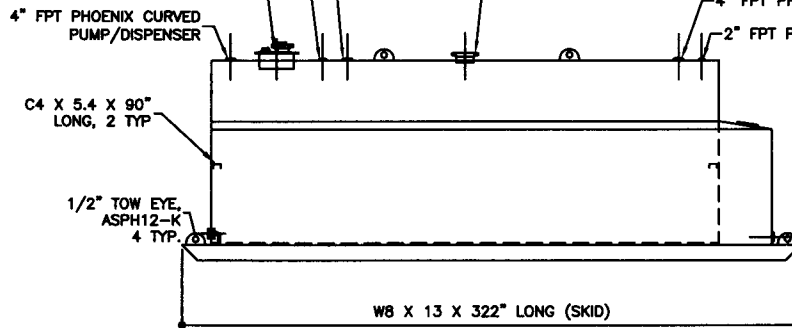
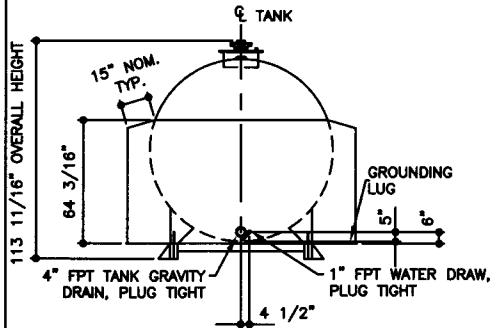
4" FPT PHOENIX CURVED SPARE/STAGE 2 VAPOR RECOVERY

3" FPT PHOENIX CURVED NORMAL VENT/
STAGE 1 VAPOR RECOVERY

EMERGENCY VENT
8" SLIP-ON FL 150# RF
SCH 40 X 7" LONG PIPE

18" ID PRODUCT FILL MANHOLE
3" FPT FULL CPLG LOWFILL OPENING
3/4" FPT FULL CPLG RETURN
4" FPT PHOENIX FLAT INSPECTION OPENING

4" FPT PHOENIX CURVED GAUGE
2" FPT PHOENIX FLAT STICK



ELEVATION - END VIEW

ELEVATION - SIDE VIEW

ELEVATION - END VIEW

TOLERANCES		STEEL: ASTM A36 PRIMARY TANK		COATING:		SPECIAL INSTRUCTIONS		APPROXIMATE SHIPPING WEIGHT		DRW BY
TANK		UL 142 (BUILT & LABELED) HOLDDOWNS ARE SEISMIC RATED DIKE TANK WITH SKID		"R" EXTERIOR COATING, ACE 1A RED SHOP COAT 1-3 MILS		PLUG TIGHT WRENCH PLUG TIGHT WITH PIPE DOPE ON THREADS AND TESTED LEAK FREE.		13,900 LBS.		-
CAPACITY	-0% / +10	SHELL: 2 GAUGE (1/4") HEAD: 2 GAUGE (1/4")		A" EXTERIOR ACE 3A COATING: SP-6 GRIT BLAST 3A COLOR: #WH01 (WHITE)		STIFFENERS ARE NOT SHOWN IN ELEVATION VIEWS FOR CLARITY		TANK VENT CAPACITY 354,000 PRIMARY		REV No 1
OVERALL LENGTH	-0" / +2"	DIKE TANK		1 CT TN-161 EPOXY 3.0-5.0 MILS 1 CT TN-74 URETHANE 2.0-3.0 MILS TDFT 5.0-8.0 MILS						SHEET 2
OVERALL WIDTH	-0" / +1"	FLOOR: 6 GAUGE (3/16") WALL: 10 GAUGE (9/64") COWLING: 10 GAUGE (9/64")		INTERIOR: BARE STEEL						OF
OVERALL HEIGHT	-1/2" / +1/2"	ACE PART No. AC08000U2D2		QTY: 1						
OTHER DIMENSIONS	-1/4" / +1/4"	1-206-281-5000		AceDike - 8000 GALLON						
		ACE HOUSE PAPER No. -						JOB ID No. -		ENG. FILE No. -
		1-206-281-5000						01-01-02 SUPERCEDES 09-01-01		

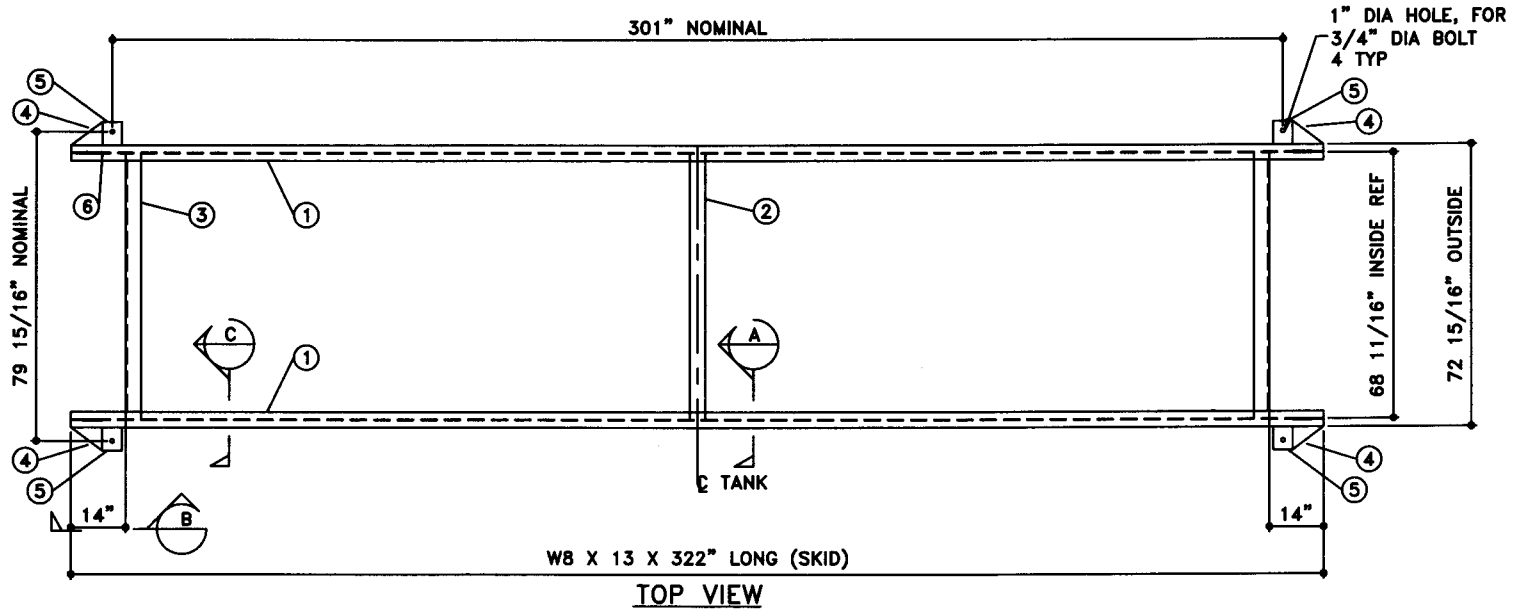


(F:111ACSHOPIDIKEU2D212-ORTH.GCD-1:64)

NOTE:
1. ALL NOMINAL DIMENSIONS ARE 3"±

BILL OF MATERIAL

ITEM	QTY	NAME	DESCRIPTION	MATL	PART No.	NOTES
1	2	SKID BEAM	W8 X 13 X 322" LONG	A36	-	MOUNT, COAT
2	1	SKID CROSS BRACE	4" SCH 40 PIPE X 68 11/16" LONG	A36	-	MOUNT, COAT
3	2	SKID CROSS BRACE	L4 X 4 X 3/8 X 68 11/16" LONG TOE DOWN COPE ENDS	A36	-	MOUNT, COAT
4	-	SKID CAP	PLATE	A36	-	SEE DTL SHT
5	-	SEISMIC HOLDDOWN	PLATE	A36	-	SEE DTL SHT
6	-	TOW EYE	PLATE	A36	-	SEE DTL SHT



JOB ID No.	TOLERANCES
-	SKID
ACE HOUSE PAPER No.	OVERALL LENGTH -1/4" / +1/4"
-	OVERALL WIDTH -1/4" / +1/4"
ENGG. FILE No.	OVERALL HEIGHT -1/4" / +1/4"
-	OTHER DIMENSIONS -1/8" / +1/8"

QUANTITY	PART NAME
1	SKID DETAILS
	ACE PART No. AC08000U2D2
	(1.32)

No.	DRAWING / REVISION	DRAWN BY	CHECKED BY	SHEET
1	1ST SUBMITTAL	-	-	OF
-	-	-	-	
-	-	-	-	
-	-	-	-	
01-01-01 SUPERCEDES				