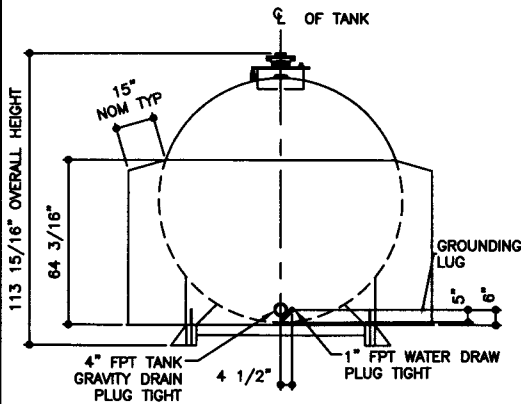
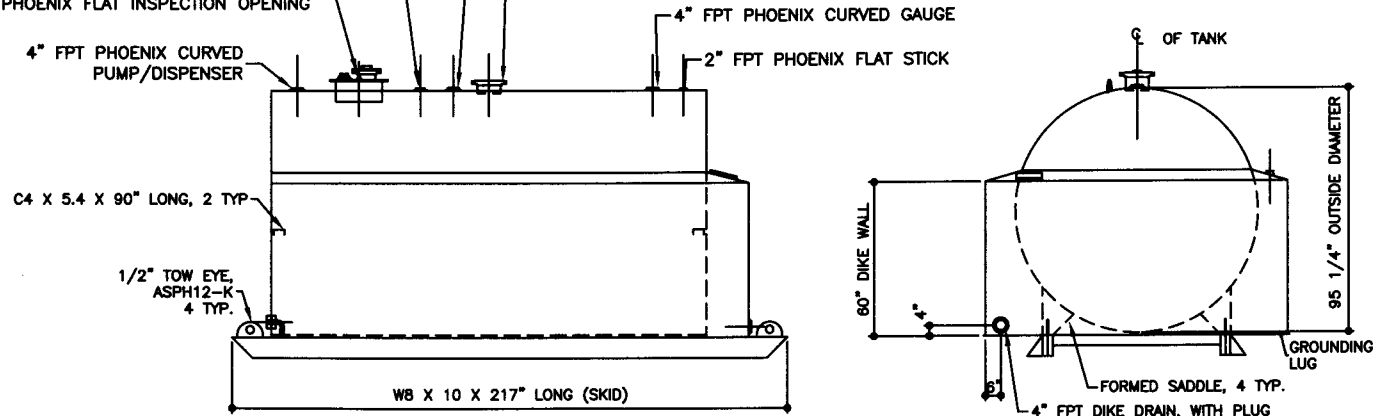


TOP VIEW

- 3" FPT PHOENIX CURVED NORMAL VENT / STAGE 1 VAPOR RECOVERY
- 4" FPT PHOENIX CURVED SPARE / STAGE 2 VAPOR RECOVERY
- 18" ID PRODUCT FILL MANHOLE
- 3" FPT FULL CPLG LOWFILL OPENING
- 3/4" FPT FULL CPLG RETURN
- 4" FPT PHOENIX FLAT INSPECTION OPENING
- EMERGENCY VENT
- 8" SLIP-ON FL 150# RF SCH 40 X 7" LONG PIPE



ELEVATION - END VIEW



ELEVATION - SIDE VIEW

ELEVATION - END VIEW

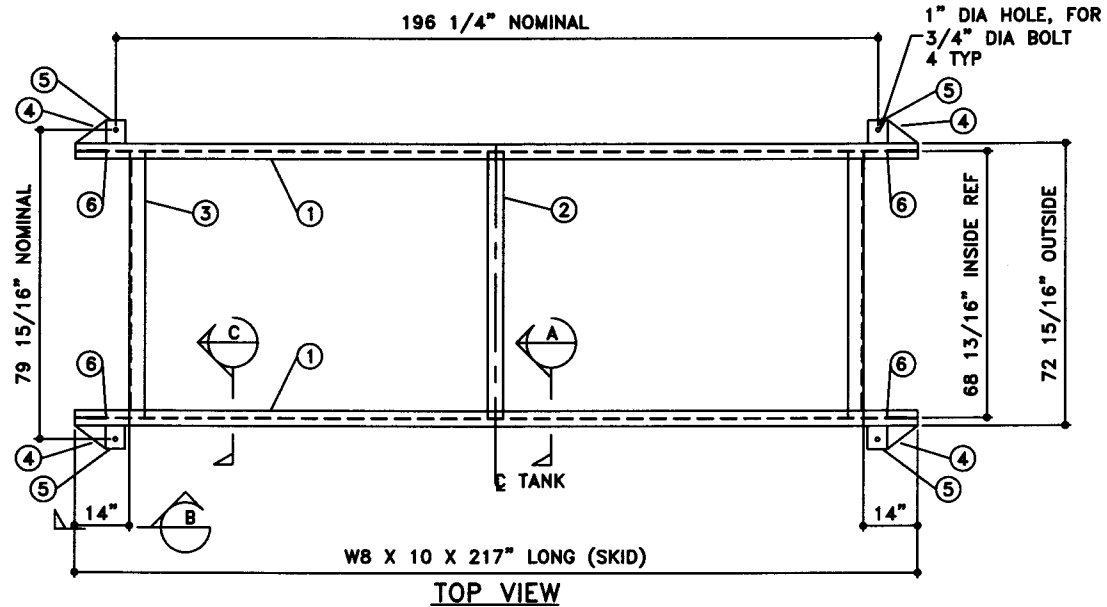
<b>TOLERANCES</b> TANK CAPACITY -0%, +10 OVERALL LENGTH -0" / +2" OVERALL WIDTH -0" / +1" OVERALL HEIGHT -1/2" / +1/2" OTHER DIMENSIONS -1/4" / +1/4"		UL 142 (BUILT & LABELED) HOLDDOWNS ARE SEISMIC RATED DIKE TANK WITH SKID		STEEL: ASTM A36 PRIMARY TANK SHELL: 2 GAUGE (1/4") HEAD: 2 GAUGE (1/4")  DIKE TANK FLOOR: 6 GAUGE (3/16") WALL: 10 GAUGE (9/64") COWLING: 10 GAUGE (9/64")		COATING: "R" EXTERIOR COATING, ACE 1A RED SHOP COAT 1-3 MILS  "A" EXTERIOR ACE 3A COATING: SP-6 GRIT BLAST 3A COLOR: #WH01 (WHITE) 1 CT TN-161 EPOXY 3.0-5.0 MILS 1 CT TN-74 URETHANE 2.0-3.0 MILS TDFT 5.0-8.0 MILS  INTERIOR: BARE STEEL		SPECIAL INSTRUCTIONS PLUG TIGHT WRENCH PLUG TIGHT WITH PIPE DOPE ON THREADS AND TESTED LEAK FREE.  STIFFENERS ARE NOT SHOWN IN ELEVATION VIEWS FOR CLARITY		APPROXIMATE SHIPPING WEIGHT 9,500 LBS.  TANK VENT CAPACITY 288,000 PRIMARY CAPACITY		DRW BY REV No SHEET OF
1-206-281-5000 <b>Acetank - 5,000 GALLON</b>		ACE PART No. AC05000U2D2 QTY: 1		(F:111ACSHOPDIKEIU2D2V2-ORTH.GCD-1:48)		01-01-02 SUPERCEDES 09-01-01				1 2 OF		



# BILL OF MATERIAL

NOTE:  
1. ALL NOMINAL DIMENSIONS ARE 2"±

ITEM	QTY	NAME	DESCRIPTION	MATL	PART No.	NOTES
1	2	SKID BEAM	W8 X 10 X 217" LONG	A36	-	MOUNT, COAT
2	1	SKID CROSS BRACE	4" SCH 40 PIPE X 68 13/16" LONG	A36	-	MOUNT, COAT
3	2	SKID CROSS BRACE	L4 X 4 X 3/8 X 68 13/16" LONG TOE DOWN COPE ENDS	A36	-	MOUNT, COAT
4	-	SKID CAP	PLATE	A36	-	SEE DTL SHT
5	-	SEISMIC HOLDDOWN	PLATE	A36	-	SEE DTL SHT
6	-	TOW EYE	PLATE	A36	-	SEE DTL SHT



P.O. Box 9039  
Seattle, WA 98109-0039

JOB ID No.	-
ACE HOUSE PAPER No.	-
ENGG. FILE No.	-

### TOLERANCES

SKID	
OVERALL LENGTH	-1/4" / +1/4"
OVERALL WIDTH	-1/4" / +1/4"
OVERALL HEIGHT	-1/4" / +1/4"
OTHER DIMENSIONS	-1/8" / +1/8"

QUANTITY  
**1**

PART NAME	SKID DETAILS
ACE PART No.	AC05000U2D2
(1:32)	

No.	DRAWING / REVISION	DRAWN BY	CHECKED BY	SHEET
1	1ST SUBMITTAL	-	-	OF
-	-	-	-	
-	-	-	-	
-	-	-	-	

01-01-01 SUPERCEDES