

TOLERANCES TANK

UL 142 (BUILT & LABELED)
HOLDDOWNS ARE SEISMIC RATED
DIKE TANK WITH SKID

STEEL: ASTM A36
PRIMARY TANK
SHELL: 12 GAUGE (7/64")
HEAD: 12 GAUGE (7/64")

COATING:
"R" EXTERIOR COATING, ACE 1A
RED SHOP COAT 1-3 MILS

SPECIAL INSTRUCTIONS
PLUG TIGHT
WRENCH PLUG TIGHT WITH PIPE DOPE
ON THREADS AND TESTED LEAK FREE.

APPROXIMATE SHIPPING WEIGHT
1,190 LBS.

DRW BY

REV NO
1

TANK VENT CAPACITY
52,700 PRIMARY

SHEET

2

OF

JOB ID No. ACE HOUSE PAPER No. ENG. FILE No.

04-01-02 SUPERCEDES 01-01-02

AceDike - 300 GALLON

DIKE TANK
FLOOR: 10 GAUGE (9/64")
WALL: 10 GAUGE (9/64")
COWLING: 10 GAUGE (9/64")

INTERIOR:
BARE STEEL

ACE PART No. AC00300U2D2

QTY: 1

(F:111)ACSHOP/DIKEIU2D2100300U2-ORTH.GCD:1:24

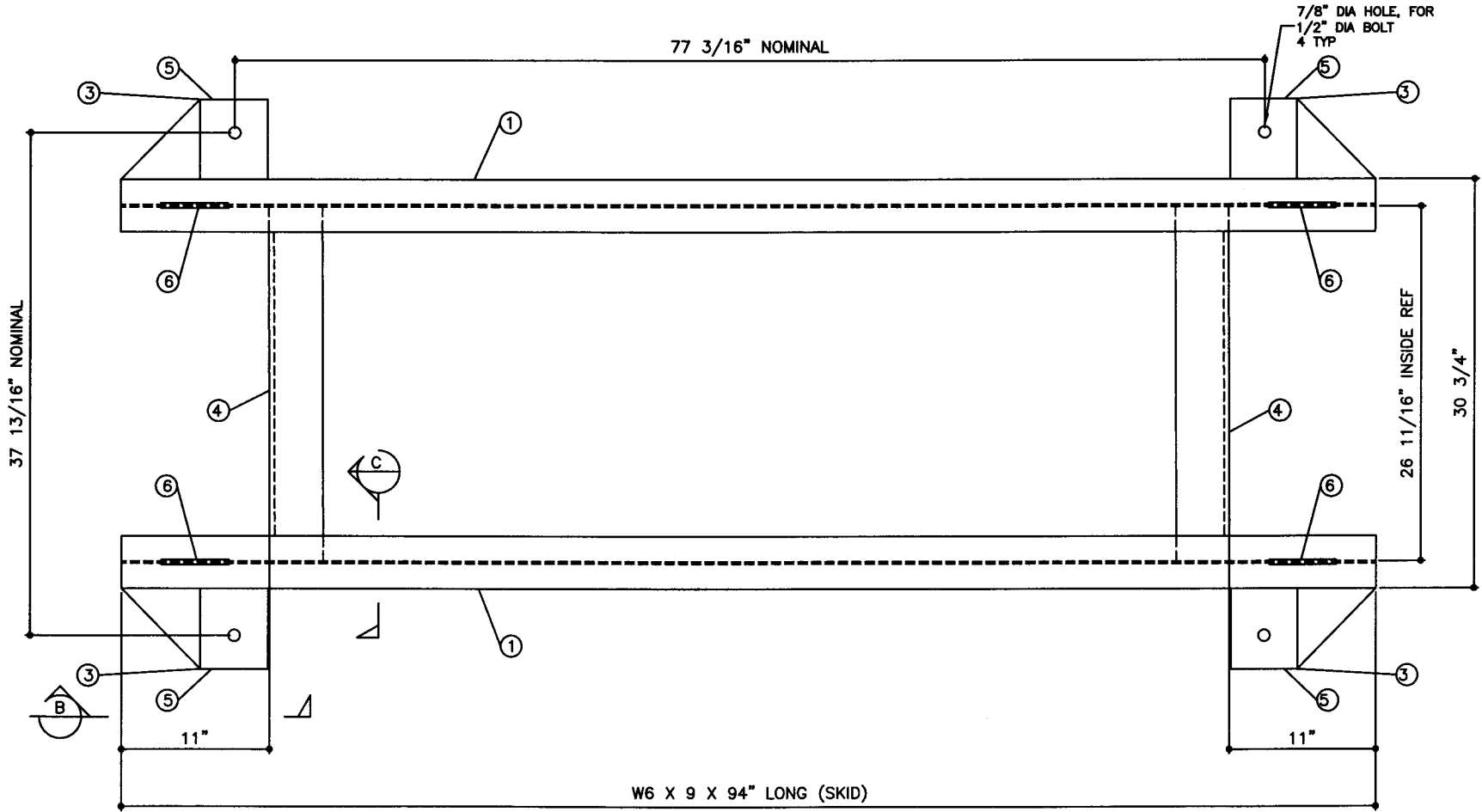
1-206-281-5000

Acetank & EQUIPMENT
COPYRIGHT 1997 ACE TANK & EQUIPMENT

BILL OF MATERIAL

NOTE:
1. ALL NOMINAL DIMENSIONS ARE 2"±

ITEM	QTY	NAME	DESCRIPTION	MATL	PART No.	NOTES
1	2	SKID BEAM	W6 X 9 X 94" LONG	A36	-	MOUNT, COAT
2	-	-	-	-	-	-
3	-	SKID CAP	PLATE	-	-	MOUNT, COAT
4	2	SKID CROSS BRACE	L4 X 4 X 3/8 X 26 11/16" LONG TOE DOWN COPE ENDS	A36	-	MOUNT, COAT
5	-	SEISMIC HOLD DOWN	PLATE	A36	-	MOUNT, COAT
6	-	TOW EYE	PLATE	A36	-	SEE DTL SHT



TOP VIEW



P.O. Box 9039
Seattle, WA 98109-0039

JOB ID No.	TOLERANCES
-	SKID
ACE HOUSE PAPER No.	OVERALL LENGTH -1/4" / +1/4"
-	OVERALL WIDTH -1/4" / +1/4"
ENGG. FILE No.	OVERALL HEIGHT -1/4" / +1/4"
-	OTHER DIMENSIONS -1/8" / +1/8"

QUANTITY	PART NAME	SKID DETAILS
1	SKID	-
-	ACE PART No.	AC00300U2D2
-	(1:08)	-

No.	DRAWING / REVISION	DRAWN BY	CHECKED BY	SHEET
1	1ST SUBMITTAL	-	-	OF
-	-	-	-	-
-	-	-	-	-
-	-	-	-	-

01-01-01 SUPERCEDES