

TOLERANCES	
TANK	
CAPACITY	-0% / +10
OVERALL LENGTH	-0' / +2"
OVERALL WIDTH	-0' / +1"
OVERALL HEIGHT	-1/2" / +1/2"
OTHER DIMENSIONS	-1/4" / +1/4"

UL 142 (BUILT & LABELED)
 HOLDDOWNS ARE SEISMIC RATED
 DIKE TANK WITH SKID

STEEL: ASTM A36
 PRIMARY TANK
 SHELL: 6 GAUGE (3/16")
 HEAD: 6 GAUGE (3/16")

COATING:
 "R" EXTERIOR COATING, ACE 1A
 RED SHOP COAT 1-3 MILS

"A" EXTERIOR ACE 3A COATING:
 SP-6 GRIT BLAST
 3A COLOR: #WH01 (WHITE)
 1 CT TN-161 EPOXY 3.0 -5.0 MILS
 1 CT TN-74 URETHANE 2.0 -3.0 MILS
 TDFT 5.0 -8.0 MILS

SPECIAL INSTRUCTIONS
 PLUG TIGHT
 WRENCH PLUG TIGHT WITH PIPE DOPE
 ON THREADS AND TESTED LEAK FREE.

STIFFENERS ARE NOT SHOWN IN
 ELEVATION VIEWS FOR CLARITY

APPROXIMATE SHIPPING WEIGHT
 5,095 LBS.

TANK VENT CAPACITY
 239,000 PRIMARY



AceDike - 2,500 GALLON

ACE PART No. **AC02500U2D2** QTY: **1**

(F:\111ACSHOP\DIKE\U2D2\02500\2-ORTH.GCD-1:48)

DIKE TANK
 FLOOR: 6 GAUGE (3/16")
 WALL: 10 GAUGE (9/64")
 COWLING: 10 GAUGE (9/64")

INTERIOR:
 BARE STEEL

JOB ID No. - ACE HOUSE PAPER No. - ENG. FILE No. -

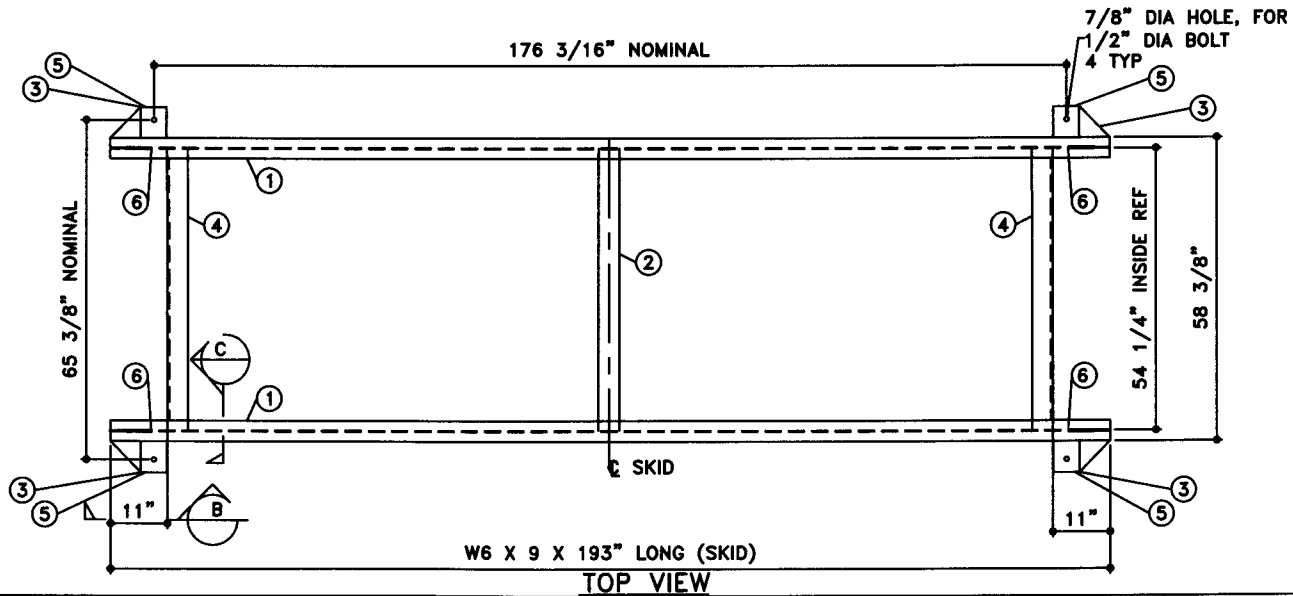
01-01-02 SUPERCEDES 09-01-01

DRW BY -
 REV No 1
 SHEET 2
 OF

NOTE:
1. ALL NOMINAL DIMENSIONS ARE 2"±

BILL OF MATERIAL

ITEM	QTY	NAME	DESCRIPTION	MATL	PART No.	NOTES
1	2	SKID BEAM	W6 X 9 X 193" LONG	A36	-	MOUNT, COAT
2	1	SKID CROSS BRACE	4" SCH 40 PIPE X 54 1/4" LONG	A36	-	MOUNT, COAT
3	-	SKID CAP	PLATE	-	-	MOUNT, COAT
4	2	SKID CROSS BRACE	L4 X 4 X 3/8 X 54 1/4" LONG TOE DOWN COPE ENDS	A36	-	MOUNT, COAT
5	-	SEISMIC HOLD DOWN	PLATE	A36	-	MOUNT, COAT
6	-	TOW EYE	PLATE	A36	-	SEE DTL SHT



TOP VIEW

JOB ID No.	TOLERANCES
-	SKID
ACE HOUSE PAPER No.	OVERALL LENGTH -1/4" / +1/4"
-	OVERALL WIDTH -1/4" / +1/4"
ENGG. FILE No.	OVERALL HEIGHT -1/4" / +1/4"
-	OTHER DIMENSIONS -1/8" / +1/8"

QUANTITY	PART NAME	SKID DETAILS
1		
	ACE PART No.	AC02500U2D2
	(1:24)	

No.	DRAWING / REVISION	DRAWN BY	CHECKED BY	SHEET
1	1ST SUBMITTAL	-	-	OF
-	-	-	-	
-	-	-	-	
-	-	-	-	

01-01-01 SUPERCEDES