

ELEVATION - END VIEW

ELEVATION - SIDE VIEW

ELEVATION - END VIEW

TOLERANCES	
TANK	
CAPACITY	-0% / +10
OVERALL LENGTH	-0" / +2"
OVERALL WIDTH	-0" / +1"
OVERALL HEIGHT	-1/2" / +1/2"
OTHER DIMENSIONS	-1/4" / +1/4"

UL 142 (BUILT & LABELED)  
 HOLDDOWNS ARE SEISMIC RATED  
 DIKE TANK WITH SKID

STEEL: ASTM A36  
 PRIMARY TANK  
 SHELL: 6 GAUGE (3/16")  
 HEAD: 6 GAUGE (3/16")

COATING:  
 "R" EXTERIOR COATING, ACE 1A  
 RED SHOP COAT 1-3 MILS  
 "A" EXTERIOR ACE 3A COATING:  
 SP-6 GRIT BLAST  
 3A COLOR: #WH01 (WHITE)  
 1 CT TN-161 EPOXY 3.0-5.0 MILS  
 1 CT TN-74 URETHANE 2.0-3.0 MILS  
 TDFT 5.0-8.0 MILS

SPECIAL INSTRUCTIONS  
 PLUG TIGHT  
 WRENCH PLUG TIGHT WITH PIPE DOPE  
 ON THREADS AND TESTED LEAK FREE.  
 STIFFENERS ARE NOT SHOWN IN  
 ELEVATION VIEWS FOR CLARITY

APPROXIMATE SHIPPING WEIGHT  
 4,475 LBS.  
 TANK VENT CAPACITY  
 211,000 PRIMARY



**AceDike - 2,000 GALLON**

ACE PART No. AC02000U2D2 QTY: 1

(F:111ACSHOPDIKEU2D2I02000I2-ORTH.GCD-1:32)

DIKE TANK  
 FLOOR: 10 GAUGE (9/64")  
 WALL: 10 GAUGE (9/64")  
 COWLING: 10 GAUGE (9/64")

INTERIOR:  
 BARE STEEL

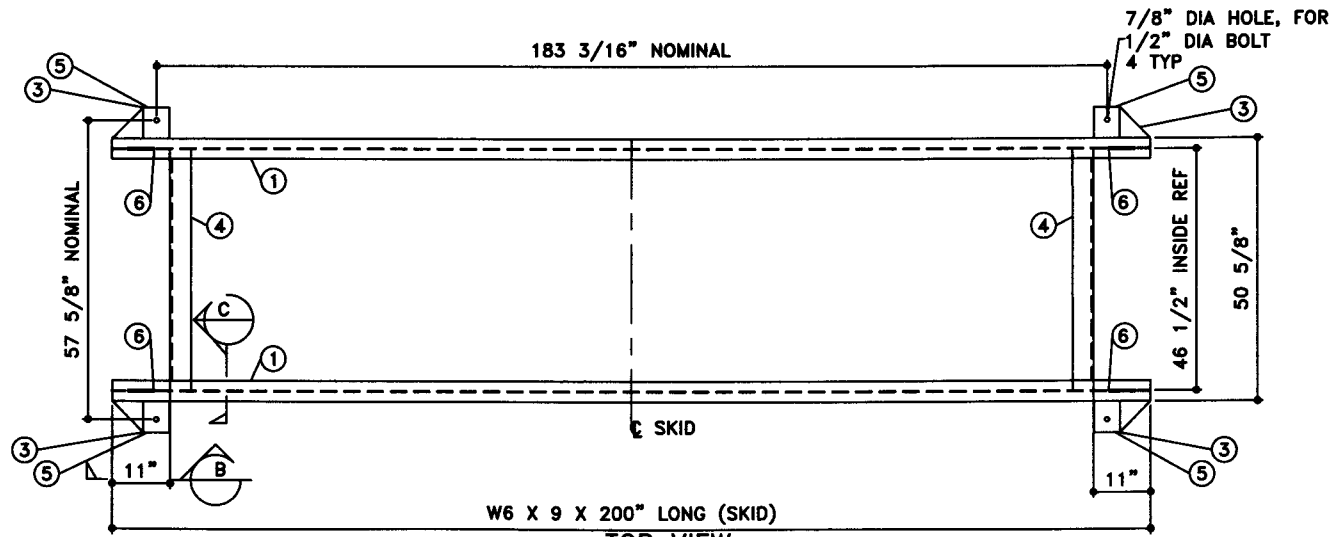
DRW BY -  
 REV No 1  
 SHEET 2  
 OF

JOB ID No. - ACE HOUSE PAPER No. - ENG. FILE No. -  
 01-01-02 SUPERCEDES 09-01-01

NOTE:  
1. ALL NOMINAL DIMENSIONS ARE 2"±

### BILL OF MATERIAL

ITEM	QTY	NAME	DESCRIPTION	MATL	PART No.	NOTES
1	2	SKID BEAM	W6 X 9 X 200" LONG	A36	-	MOUNT, COAT
2	-					
3	-	SKID CAP	PLATE	-	-	MOUNT, COAT
4	2	SKID CROSS BRACE	L4 X 4 X 3/8 X 46 1/2" LONG TOE DOWN COPE ENDS	A36	-	MOUNT, COAT
5	-	SEISMIC HOLD DOWN	PLATE	A36	-	MOUNT, COAT
6	-	TOW EYE	PLATE	A36	-	SEE DTL SHT



TOP VIEW



P.O. Box 9039  
Seattle, WA 98109-0039

JOB ID No.	TOLERANCES
-	SKID
ACE HOUSE PAPER No.	OVERALL LENGTH -1/4" / +1/4"
-	OVERALL WIDTH -1/4" / +1/4"
ENGG. FILE No.	OVERALL HEIGHT -1/4" / +1/4"
-	OTHER DIMENSIONS -1/8" / +1/8"

QUANTITY	PART NAME
1	SKID DETAILS
	ACE PART No. AC02000U2D2
	(1:24)

No.	DRAWING / REVISION	DRAWN BY	CHECKED BY	SHEET
1	1ST SUBMITTAL	-	-	OF
-	-	-	-	
-	-	-	-	
-	-	-	-	

01-01-01 SUPERCEDES