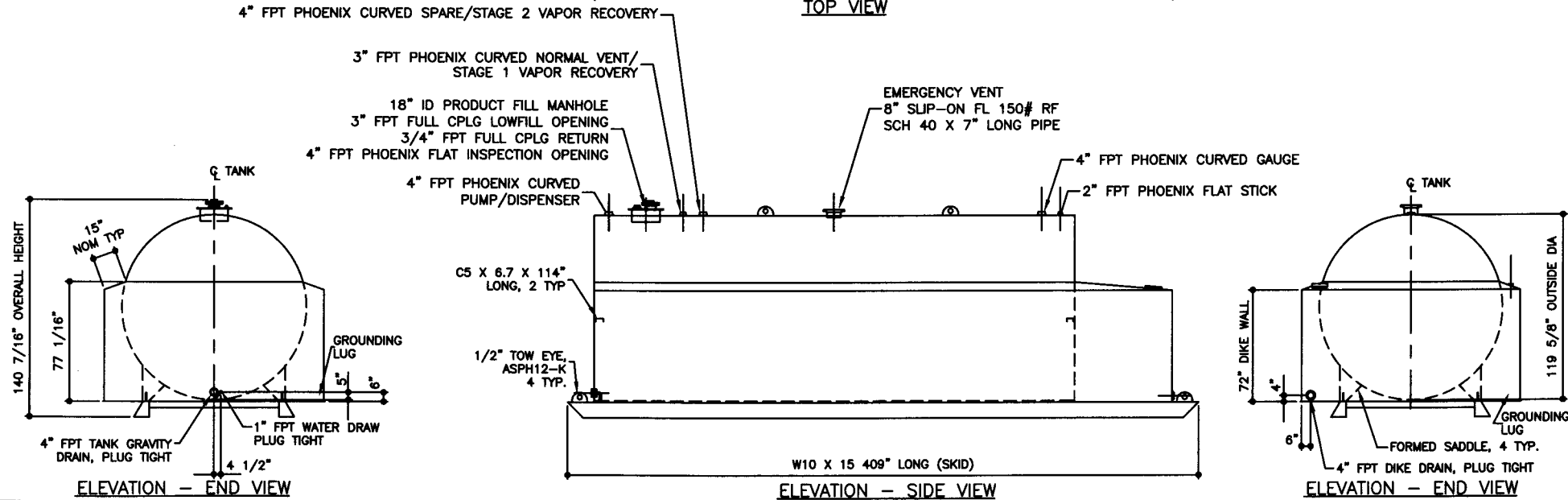


TOP VIEW



ELEVATION - END VIEW

ELEVATION - SIDE VIEW

ELEVATION - END VIEW

TOLERANCES	
TANK	
CAPACITY	-0% / +10
OVERALL LENGTH	-0" / +2"
OVERALL WIDTH	-0" / +1"
OVERALL HEIGHT	-1/2" / +1/2"
OTHER DIMENSIONS	-1/4" / +1/4"

UL 142 (BUILT & LABELED)
 HOLDDOWNS ARE SEISMIC RATED
 DIKE TANK WITH SKID

STEEL: ASTM A36
 PRIMARY TANK
 SHELL: 2 GAUGE (1/4")
 HEAD: 2 GAUGE (1/4")

COATING:
 "R" EXTERIOR COATING, ACE 1A
 RED SHOP COAT 1-3 MILS
 "A" EXTERIOR ACE 3A COATING:
 SP-6 GRIT BLAST
 3A COLOR: #WH01 (WHITE)
 1 CT TN-161 EPOXY 3.0-5.0 MILS
 1 CT TN-74 URETHANE 2.0-3.0 MILS
 TDFT 5.0-8.0 MILS

SPECIAL INSTRUCTIONS
 PLUG TIGHT
 WRENCH PLUG TIGHT WITH PIPE DOPE
 ON THREADS AND TESTED LEAK FREE.
 STIFFENERS ARE NOT SHOWN IN
 ELEVATION VIEWS FOR CLARITY

APPROXIMATE SHIPPING WEIGHT
 20,200 LBS.
 TANK VENT CAPACITY
 462,000



AceDike - 15,000 GALLON

ACE PART No. **AC15000U2D2** QTY: **1**

(F:111ACSHOP/DIKE/U2D2/15000/2-ORTH.GCD-1:84)

DIKE TANK
 FLOOR: 6 GAUGE (3/16")
 WALL: 10 GAUGE (9/64")
 COWLING: 10 GAUGE (9/64")

INTERIOR:
 BARE STEEL

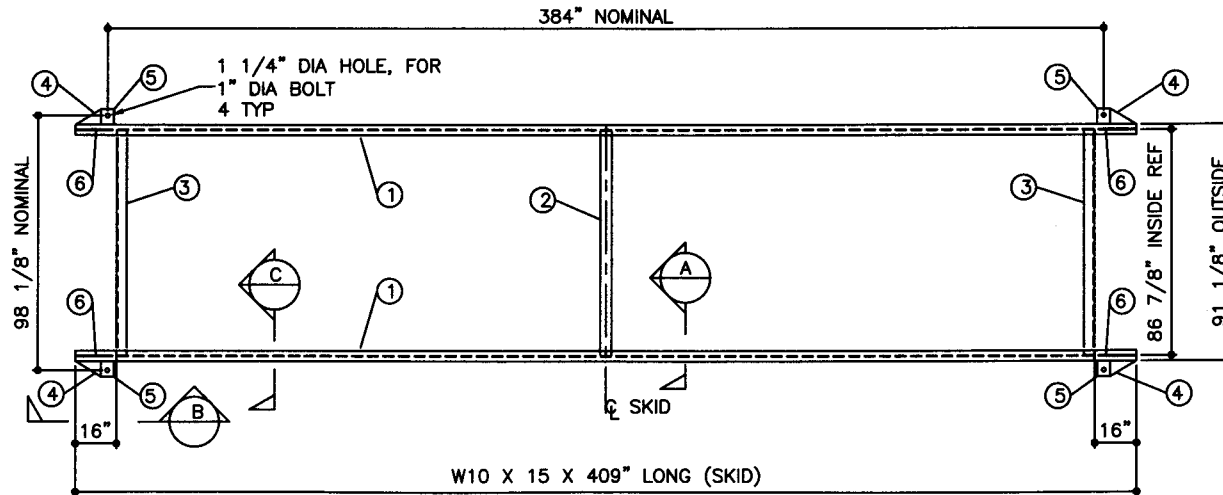
JOB ID No.	ACE HOUSE PAPER No.	ENG. FILE No.
-	-	-
01-01-02 SUPERCEDES 09-01-01		

DRW BY -
 REV No 1
 SHEET 2
 OF

NOTE:
1. ALL NOMINAL DIMENSIONS ARE 3"±

BILL OF MATERIAL

ITEM	QTY	NAME	DESCRIPTION	MATL	PART No.	NOTES
1	2	SKID BEAM	W10 X 15 X 409" LONG	A36	-	MOUNT, COAT
2	1	SKID CROSS BRACE	4" SCH. 40 PIPE X 86 7/8" LONG	A36	-	MOUNT, COAT
3	2	SKID CROSS BRACE	L4 X 4 X 3/8 X 86 7/8" LONG TOE DOWN COPE ENDS	A36	-	MOUNT, COAT
4	-	SKID CAP	PLATE	A36	-	SEE DTL SHT
5	-	SEISMIC HOLDDOWN	PLATE	A36	-	SEE DTL SHT
6	-	TOW EYE	PLATE	A36	-	SEE DTL SHT



TOP VIEW



P.O. Box 9039
Seattle, WA 98109-0039

JOB ID No.	TOLERANCES	QUANTITY	PART NAME	No.	DRAWING / REVISION	DRAWN BY	CHECKED BY	SHEET
-	SKID	1	SKID DETAILS	1	1ST SUBMITTAL	-	-	OF
ACE HOUSE PAPER No.	OVERALL LENGTH -1/4" / +1/4"			-	-	-	-	
-	OVERALL WIDTH -1/4" / +1/4"			-	-	-	-	
ENGG. FILE No.	OVERALL HEIGHT -1/4" / +1/4"		ACE PART No.	-	-	-	-	
-	OTHER DIMENSIONS -1/8" / +1/8"		AC15000U2D2					
			(1:48)		01-01-01 SUPERCEDES			