

TOLERANCES

TANK	
CAPACITY	-0% / +10
OVERALL LENGTH	-0" / +2"
OVERALL WIDTH	-0" / +1"
OVERALL HEIGHT	-1/2" / +1/2"
OTHER DIMENSIONS	-1/4" / +1/4"

UL 142 (BUILT & LABELED)
HOLDDOWNS ARE SEISMIC RATED
DIKE TANK WITH SKID

STEEL: ASTM A36
PRIMARY TANK
SHELL: 10 GAUGE (9/64)
HEAD: 10 GAUGE (9/64)

DIKE TANK
FLOOR: 10 GAUGE (9/64)
WALL: 10 GAUGE (9/64)
COWLING: 10 GAUGE (9/64)

COATING:
"R" EXTERIOR COATING, ACE 1A
RED SHOP COAT 1-3 MILS

"A" EXTERIOR ACE 3A COATING:
SP-6 GRIT BLAST
3A COLOR: #WH01 (WHITE)
1 CT TN-161 EPOXY 3.0-5.0 MILS
1 CT TN-74 URETHANE 2.0-3.0 MILS
TDFT 5.0-8.0 MILS

INTERIOR:
BARE STEEL

SPECIAL INSTRUCTIONS

PLUG TIGHT
WRENCH PLUG TIGHT WITH PIPE DOPE
ON THREADS AND TESTED LEAK FREE.

STIFFENERS ARE NOT SHOWN IN
ELEVATION VIEWS FOR CLARITY

APPROXIMATE SHIPPING WEIGHT:
2,685 LBS.

TANK VENT CAPACITY
147,000 PRIMARY

JOB ID No.	ACE HOUSE PAPER No.	ENG. FILE No.
-	-	-

04-01-02 SUPERCEDES 01-01-02

AceDike - 1,100 GALLON

ACE PART No. AC01100U2D2 QTY: 1

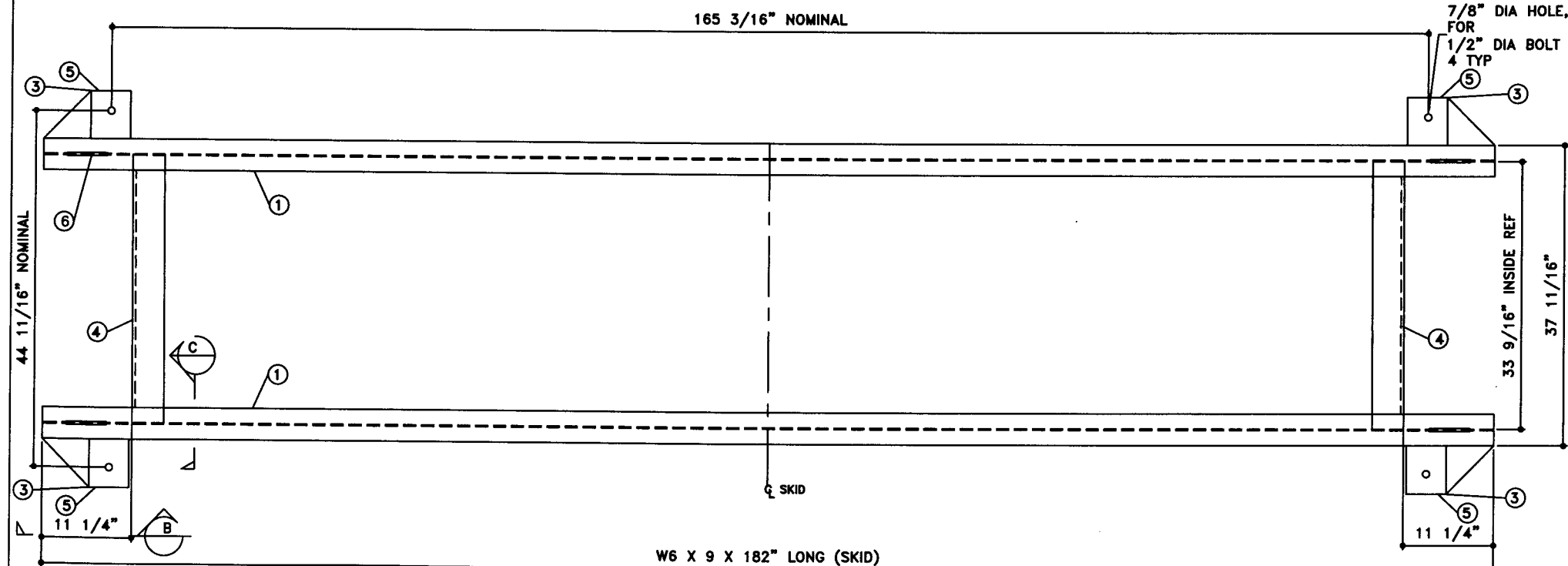
(F:111ACSHOPDIKEIU2D210110012-ORTH.GCD-1.32)

DRAW BY
REV No
1
SHEET
2
OF

NOTE:
1. ALL NOMINAL DIMENSIONS ARE 2"±

BILL OF MATERIAL

ITEM	QTY	NAME	DESCRIPTION	MATL	PART No.	NOTES
1	2	SKID BEAM	W6 X 9 X 182" LONG	A36	-	MOUNT, COAT
2	-					
3	-	SKID CAP	PLATE	-	-	MOUNT, COAT
4	2	SKID CROSS BRACE	L4 X 4 X 3/8 X 33 9/16" LONG TOE DOWN COPE ENDS	A36	-	MOUNT, COAT
5	-	SEISMIC HOLD DOWN	PLATE	A36	-	MOUNT, COAT
6	-	TOW EYE	PLATE	A36	-	SEE DTL SHT



TOP VIEW

Acetank & EQUIPMENT
P.O. Box 9039
Seattle, WA 98109-0039

JOB ID No.	-
ACE HOUSE PAPER No.	-
ENGG. FILE No.	-

TOLERANCES	
SKID	
OVERALL LENGTH	-1/4" / +1/4"
OVERALL WIDTH	-1/4" / +1/4"
OVERALL HEIGHT	-1/4" / +1/4"
OTHER DIMENSIONS	-1/8" / +1/8"

QUANTITY	1
PART NAME	SKID DETAILS
ACE PART No.	AC01100U2D2
	(1:12)

No.	DRAWING / REVISION	DRAWN BY	CHECKED BY	SHEET
1	1ST SUBMITTAL	-	-	-
-	-	-	-	-
-	-	-	-	-
-	-	-	-	-
01-01-01 SUPERCEDES				OF