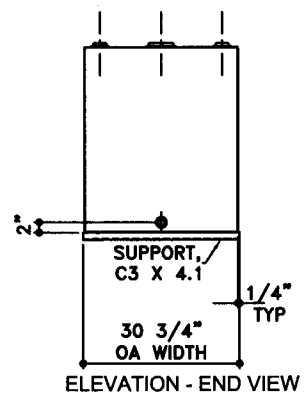
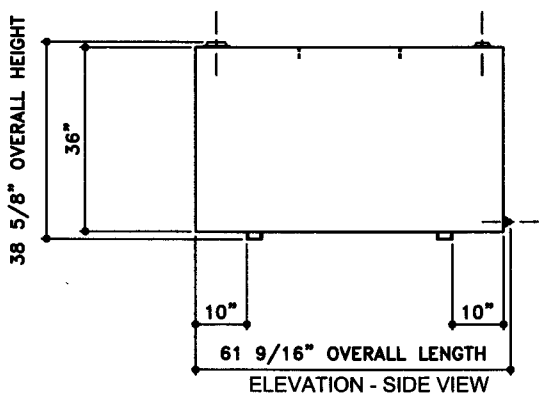
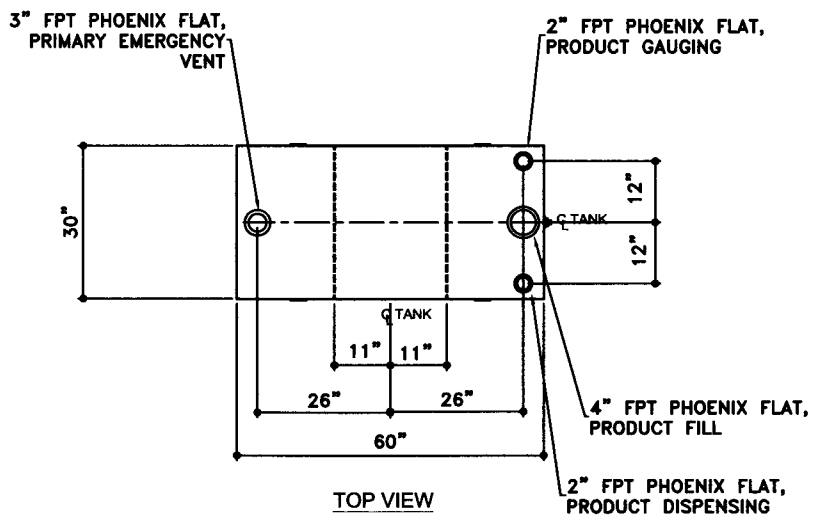


NOTE:
ALL TANK DIMENSIONS ARE INSIDE TO INSIDE



TOLERANCES	
TANK	
CAPACITY	-0% / +10
OVERALL LENGTH	-0" / +1/2"
OVERALL WIDTH	-0" / +1/2"
OVERALL HEIGHT	-0" / +1/2"
OTHER DIMENSIONS	-1/4" / +1/4"

UL 142 (BUILT & LABELED)
SINGLE WALL TANK
RECTANGLE TANK

STEEL: ASTM A36
TANK:
TOP: 10 GAUGE (9/64")
SIDES: 12 GAUGE (7/64")
ENDS: 12 GAUGE (7/64")
BOTTOM: 10 GAUGE (9/64")

COATING:
"G" EXTERIOR COATING, ACE 1E
GRAY SHOP COAT 1-3 MILS
"A" EXTERIOR ACE 3A COATING:
SP-6 GRIT BLAST
3A COLOR: #WH01 (WHITE)
1 CT TN-161 EPOXY 3.0-5.0 MILS
1 CT TN-74 URETHANE 2.0-3.0 MILS
TDFT 5.0-8.0 MILS

SPECIAL INSTRUCTIONS
PLUG TIGHT
WRENCH PLUG TIGHT WITH PIPE DOPE
ON THREADS AND TESTED LEAK FREE.

APPROXIMATE SHIPPING WEIGHT
390 LBS.

TANK VENT CAPACITY
63,200 TANK



AceCube - 280 GALLONS

ACE PART No. AC00280U1R1 QTY: 1

(F:111ACSHOPIRECTANGLU1R110028012-ORTHO.GCD-1:16)

INTERIOR:
BARE STEEL

DRW BY -
REV No 1
SHEET 2
OF

JOB ID No. - ACE HOUSE PAPER No. - ENG. FILE No. -

01-01-02 SUPERCEDES 09-01-01

01-01-02 SUPERCEDES 09-01-01