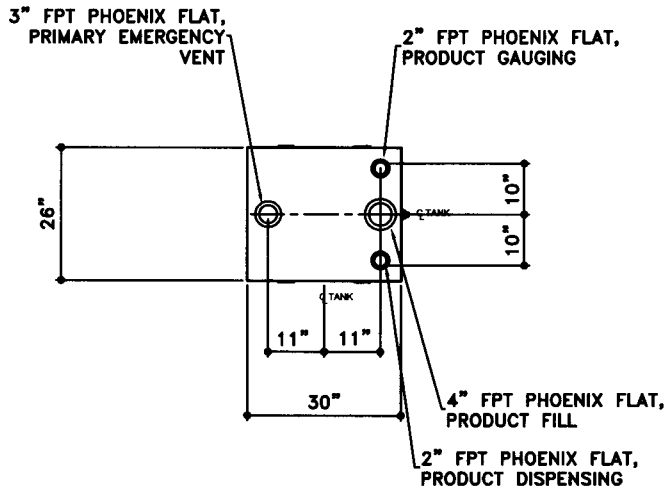
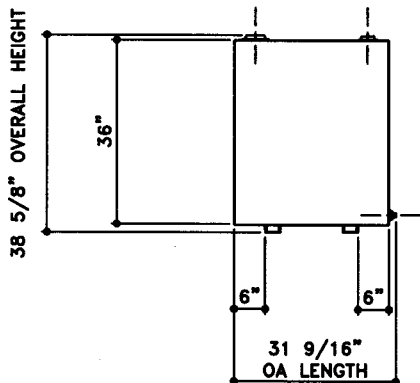


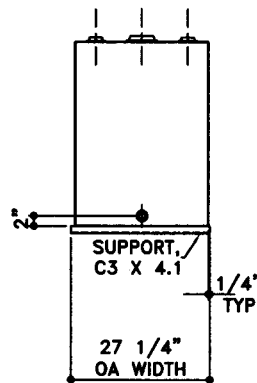
NOTE:
ALL TANK DIMENSIONS ARE INSIDE TO INSIDE



TOP VIEW



ELEVATION - SIDE VIEW



ELEVATION - END VIEW

| | | | | | | | | |
|---|--|--|--|--|--|--|--|---------------------------------------|
| TOLERANCES TANK | | UL 142 (BUILT & LABELED) SINGLE WALL TANK RECTANGLE TANK | STEEL: ASTM A36 TANK: TOP: 12 GAUGE (7/64") SIDES: 12 GAUGE (7/64") ENDS: 12 GAUGE (7/64") BOTTOM: 12 GAUGE (7/64") | COATING: "G" EXTERIOR COATING, ACE 1E GRAY SHOP COAT 1-3 MILS "A" EXTERIOR ACE 3A COATING: SP-6 GRIT BLAST 3A COLOR: #WH01 (WHITE) 1 CT TN-161 EPOXY 3.0-5.0 MILS 1 CT TN-74 URETHANE 2.0-3.0 MILS INTERIOR: TDFT 5.0-8.0 MILS BARE STEEL | SPECIAL INSTRUCTIONS PLUG TIGHT WRENCH PLUG TIGHT WITH PIPE DOPE ON THREADS AND TESTED LEAK FREE. | APPROXIMATE SHIPPING WEIGHT 210 LBS. TANK VENT CAPACITY 42,100 TANK | JOB ID No. - ACE HOUSE PAPER No. - ENG. FILE No. - | DRW BY - REV No 1 SHEET 2 OF |
| CAPACITY -0% / +10 OVERALL LENGTH -0" / +1/2" OVERALL WIDTH -0" / +1/2" OVERALL HEIGHT -0" / +1/2" OTHER DIMENSIONS -1/4" / +1/4" 1-206-281-5000 | | | | | | | AceCube - 120 GALLONS | BOTTOM: 12 GAUGE (7/64") |
| ACETANK & EQUIPMENT COPYRIGHT 1997 ACE TANK & EQUIPMENT | | ACE PART No. AC00120U1R1 QTY: 1 | (F:\111ACSHOP\RECTANGLU1R1\10012012-ORTHO.GCD-1:16) | | | | | |