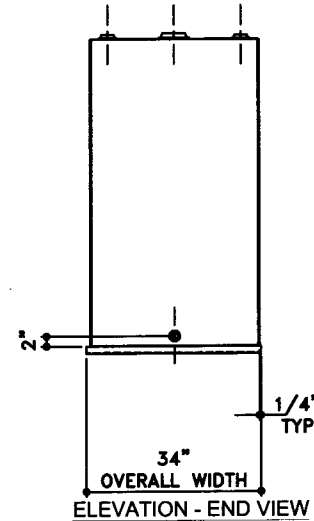
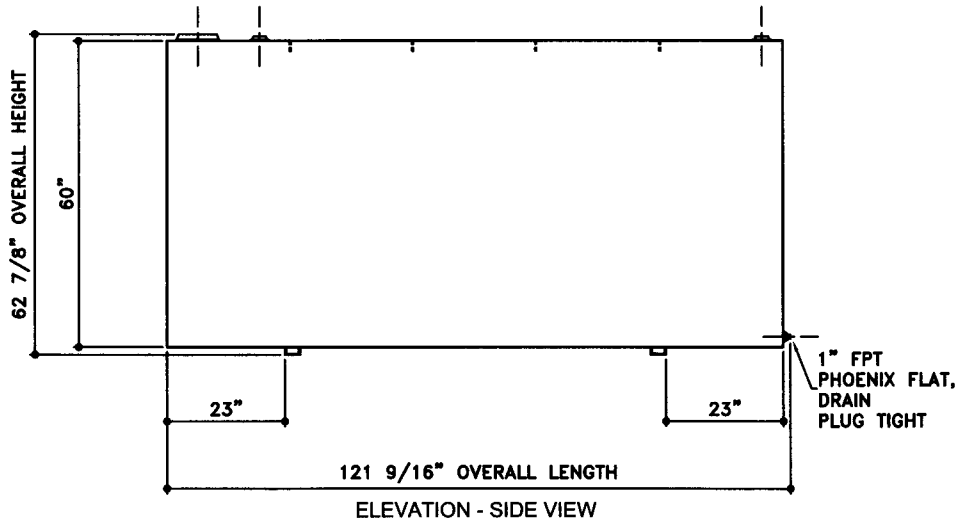
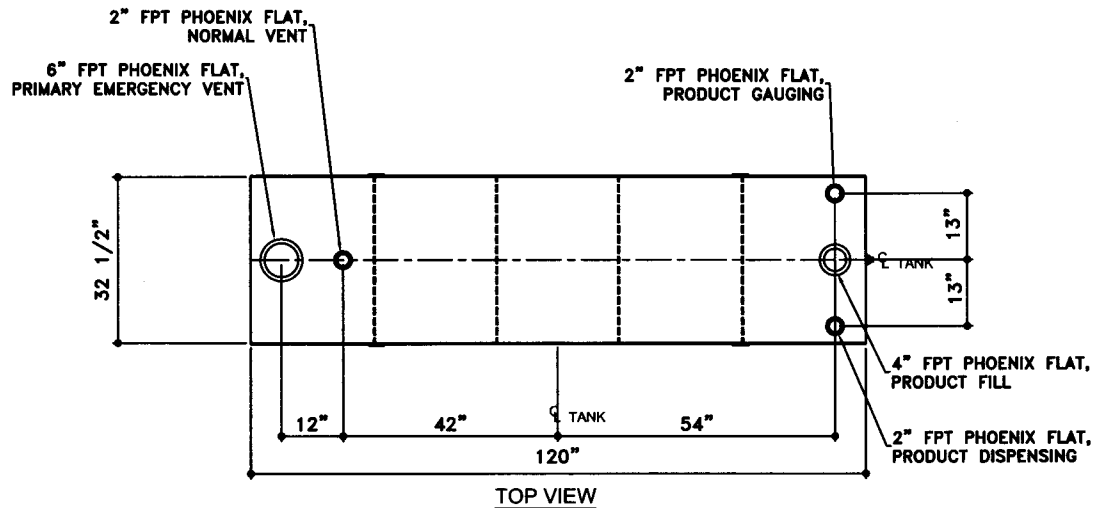


NOTE:
ALL TANK DIMENSIONS ARE INSIDE TO INSIDE



TOLERANCES TANK CAPACITY -0% / +10 OVERALL LENGTH -0" / +1/2" OVERALL WIDTH -0" / +1/2" OVERALL HEIGHT -0" / +1/2" OTHER DIMENSIONS -1/4" / +1/4"	UL 142 (BUILT & LABELED) SINGLE WALL TANK RECTANGLE TANK	STEEL: ASTM A36 TANK: TOP: 10 GAUGE (9/64") SIDES: 2 GAUGE (1/4") ENDS: 12 GAUGE (7/64") BOTTOM: 10 GAUGE (9/64")	COATING: "G" EXTERIOR COATING, ACE 1E GRAY SHOP COAT 1-3 MILS "A" EXTERIOR ACE 3A COATING: SP-6 GRIT BLAST 3A COLOR: #WH01 (WHITE) 1 CT TN-161 EPOXY 3.0-5.0 MILS 1 CT TN-74 URETHANE 2.0-3.0 MILS TDFT 5.0-8.0 MILS	SPECIAL INSTRUCTIONS PLUG TIGHT WRENCH PLUG TIGHT WITH PIPE DOPE ON THREADS AND TESTED LEAK FREE.	APPROXIMATE SHIPPING WEIGHT 1,525 LBS. TANK VENT CAPACITY 168,000 PRIMARY	DRW BY - REV No 1 SHEET 2 OF
1-206-281-5000 <h2 style="text-align: center;">AceCube - 1,000 GALLONS</h2> ACE PART No. AC01000U1R1 QTY: 1 (F:111ACSHOPIRECTANGLU1R110100012-ORTHO.GCD-1:16)			INTERIOR: BARE STEEL		JOB ID No. - ACE HOUSE PAPER No. - ENG. FILE No. - 01-01-02 SUPERCEDES 09-01-01	

