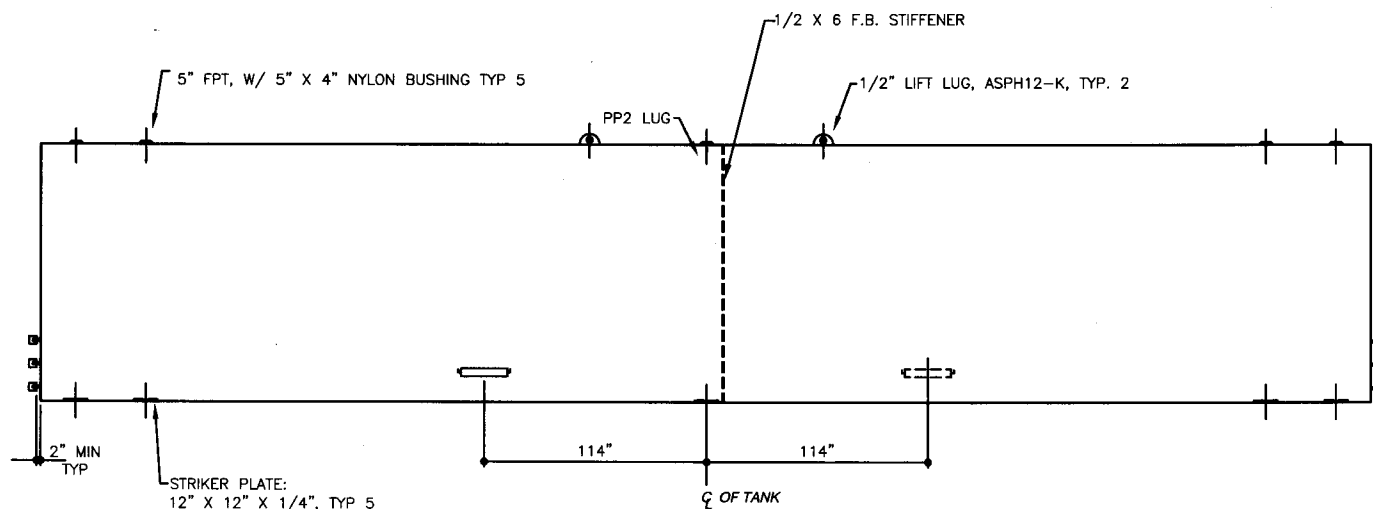
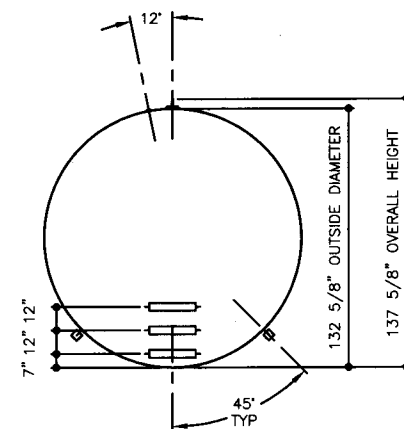


TOP VIEW



ELEVATION - SIDE VIEW



ELEVATION - END VIEW

TOLERANCES		UL, 1746 (BUILT & LABELED) STI, P3 (BUILT & LABELED) SINGLE WALL	STEEL: ASTM A36 PRIMARY TANK SHELL: 0 GAUGE (5/16") HEAD: 0 GAUGE (5/16")	COATING: INTERIOR: BARE STEEL EXTERIOR: SP-6 SANDBLAST KOPPERS 300M COAL TAR EPOXY 16 MIL MIN SURFACE AREA: 1,654.3 SQUARE FEET	SPECIAL INSTRUCTIONS LABELS ON EDGE DRY PLUG FITTINGS SCRAPE OUTSIDE SPATTER SEAL WELD FOR SPECIAL COATING OR SAND BLASTING	APPROXIMATE SHIPPING WEIGHT 29225 LBS.	DRW BY
TANK							Sti-P3 - 40,000 GALLON
CAPACITY	-0% / +10	REV No	1				
OVERALL LENGTH	-0" / +2"	QTY: 1					SHEET
OVERALL WIDTH	-0" / +1"						2
OVERALL HEIGHT	-1/2" / +1/2"	ACE PART No. AC40000U1P1B					OF
OTHER DIMENSIONS	-1/4" / +1/4"						(F:1111ACSHOPSTI-P3IU1P14000012-ORTHO.GCD-1:64)
1-206-281-5000						1-22-99 SUPERCEDES 12-2-97	

