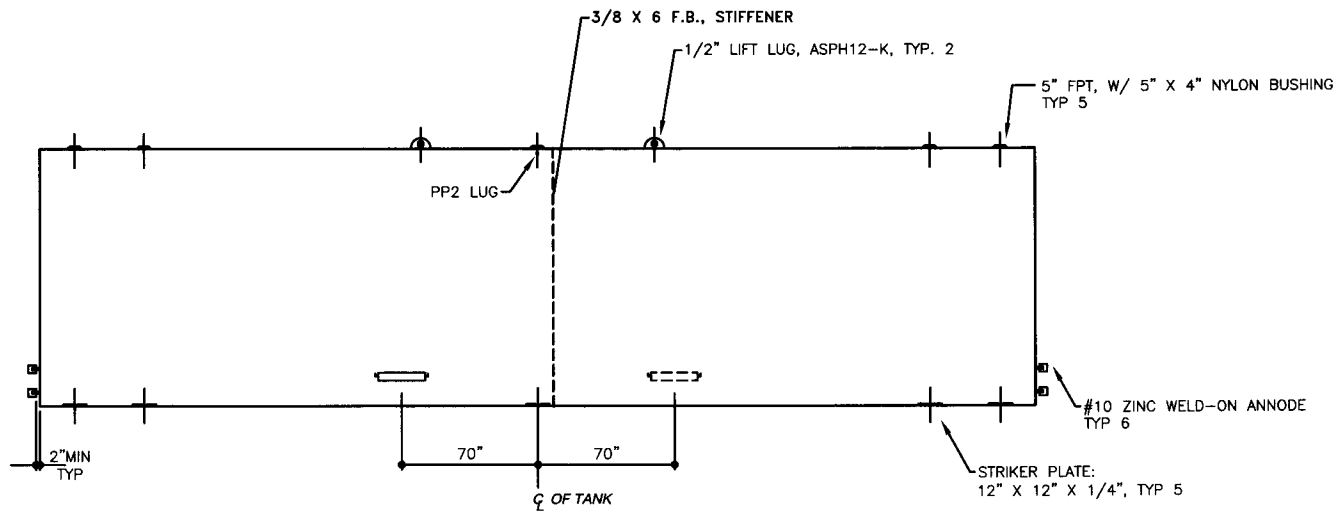
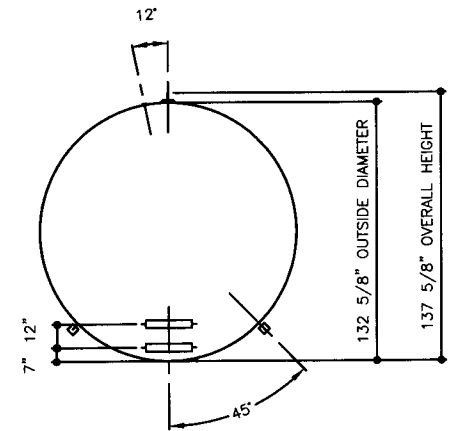


TOP VIEW



ELEVATION - SIDE VIEW



ELEVATION - END VIEW

TOLERANCES

TANK	
CAPACITY	-0% / +10
OVERALL LENGTH	-0" / +2"
OVERALL WIDTH	-0" / +1"
OVERALL HEIGHT	-1/2" / +1/2"
OTHER DIMENSIONS	-1/4" / +1/4"

UL, 1746 (BUILT & LABELED)
STI, P3 (BUILT & LABELED)
SINGLE WALL

STEEL: ASTM A36

PRIMARY TANK
SHELL: 0 GAUGE (5/16")
HEAD: 0 GAUGE (5/16")

COATING:

INTERIOR:
BARE STEEL

EXTERIOR:
SP-6 SANDBLAST
KOPPERS 300M COAL TAR EPOXY 16 MIL MIN

SURFACE AREA: 1,654.3 SQUARE FEET

SPECIAL INSTRUCTIONS

- LABELS ON EDGE
- DRY PLUG FITTINGS
- SCRAPE OUTSIDE SPATTER
- SEAL WELD FOR SPECIAL COATING OR SAND BLASTING

APPROXIMATE SHIPPING WEIGHT

22675 LBS.

DRW BY

REV No

1

-

SHEET

2

OF

Sti-P3 - 30,000 GALLON

ACE PART No.

AC30000U1P1B

QTY: 1

(F:111ACSHOPISTI-P3IU1P1300002-ORTHO.GCD-1:64)

ACE HOUSE PAPER No.

ENG. FILE No.

-

-

1-22-99 SUPERCEDES 12-2-97

