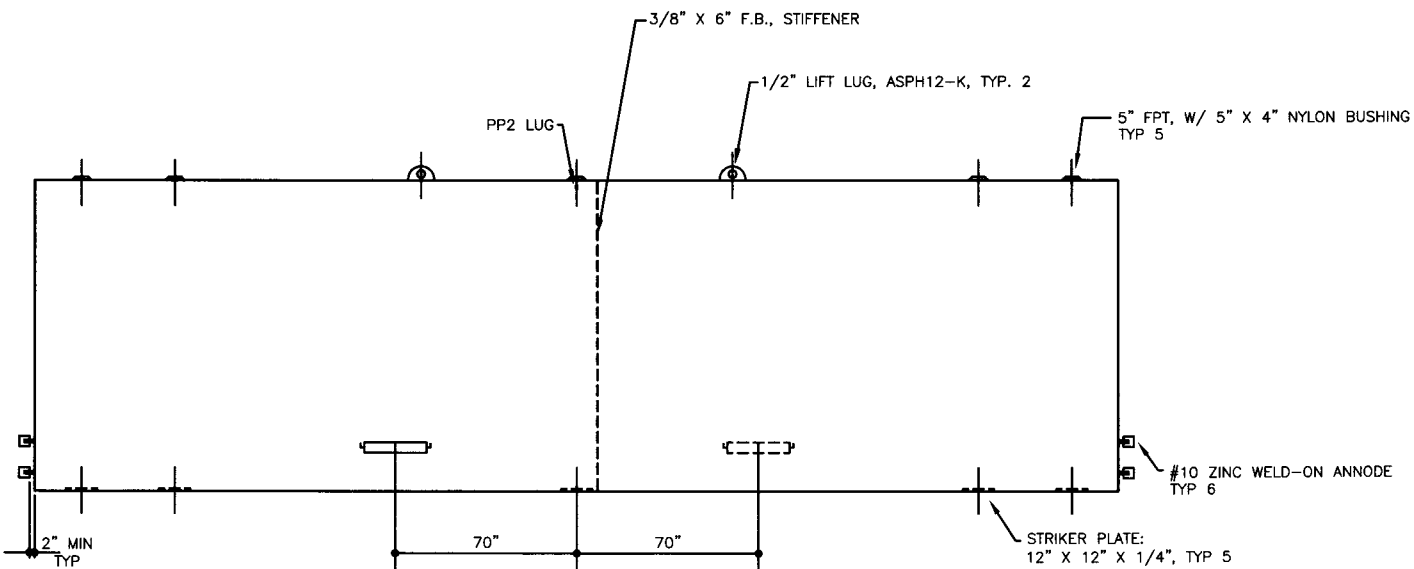
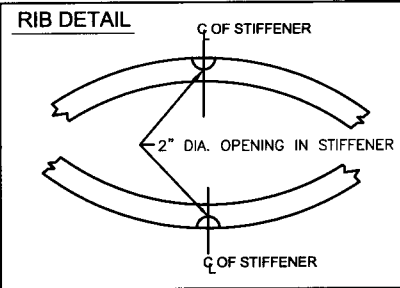
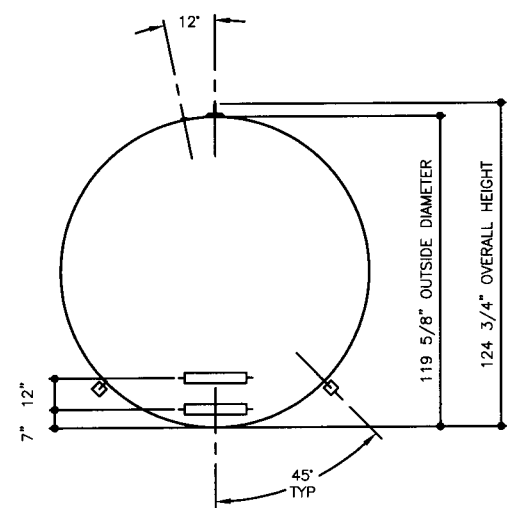


TOP VIEW



ELEVATION - SIDE VIEW



ELEVATION - END VIEW

<b>TOLERANCES</b> TANK CAPACITY -0% / +10 OVERALL LENGTH -0" / +2" OVERALL WIDTH -0" / +1" OVERALL HEIGHT -1/2" / +1/2" OTHER DIMENSIONS -1/4" / +1/4"		UL, 1746 (BUILT & LABELED) STI, P3 (BUILT & LABELED) SINGLE WALL		STEEL: ASTM A36 PRIMARY TANK SHELL: 2 GAUGE (1/4") HEAD: 2 GAUGE (1/4")		COATING: INTERIOR: BARE STEEL EXTERIOR: SP-6 SANDBLAST KOPPERS 300M COAL TAR EPOXY 16 MIL MIN SURFACE AREA: 1,242.6 SQUARE FEET		SPECIAL INSTRUCTIONS LABELS ON EDGE DRY PLUG FITTINGS SCRAPE OUTSIDE SPATTER SEAL WELD FOR SPECIAL COATING OR SAND BLASTING		APPROXIMATE SHIPPING WEIGHT 13700 LBS.		DRW BY - REV No 1 SHEET 2 OF -	
1-206-281-5000 <b>Acetank &amp; EQUIPMENT</b> <small>COPYRIGHT 1997 ACE TANK &amp; EQUIPMENT</small>		<b>Sti-P3 - 20,000 GALLON</b>		ACE PART No. AC20000U1P1B QTY: 1 <small>(F:\111ACSHOPISTI-P3IU1P1\20000\2-ORTHO.GCD-1:48)</small>		ACE HOUSE PAPER No. - ENG. FILE No. - 1-22-99 SUPERCEDES 12-2-97							