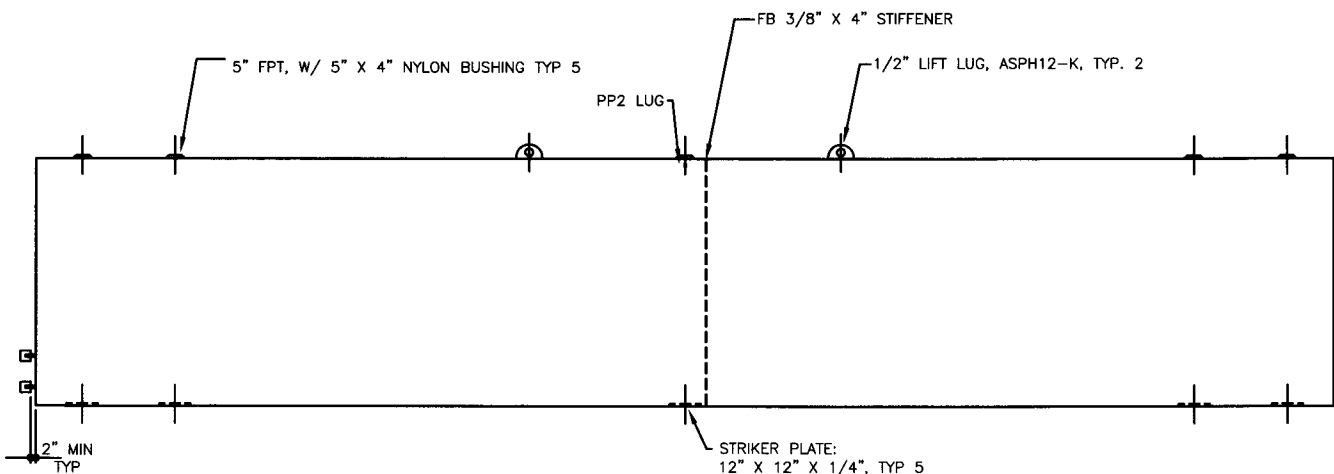
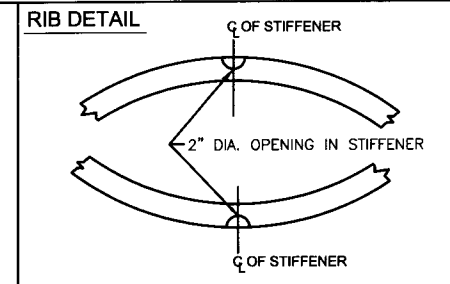
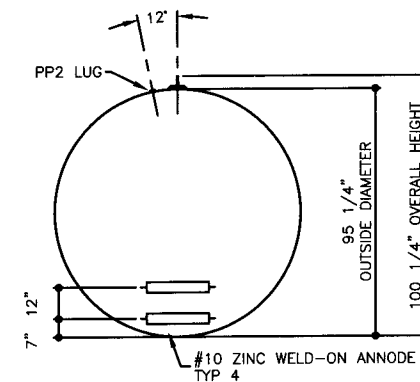


TOP VIEW



ELEVATION - SIDE VIEW



ELEVATION - END VIEW

TOLERANCES
TANK

CAPACITY	-0% / +10
OVERALL LENGTH	-0" / +2"
OVERALL WIDTH	-0" / +1"
OVERALL HEIGHT	-1/2" / +1/2"
OTHER DIMENSIONS	-1/4" / +1/4"

1-208-281-5000

UL, 1746 (BUILT & LABELED)
STI, P3 (BUILT & LABELED)
SINGLE WALL

Sti-P3 - 15,000 GALLON

ACE PART No.

AC15000U1P1B

QTY: 1

(F:111ACSHOPISTI-P3IU1P112000I2-ORTHO.GCD-1:48)

STEEL: ASTM A36

PRIMARY TANK
SHELL: 2 GAUGE (1/4")
HEAD: 2 GAUGE (1/4")

COATING:

INTERIOR:
BARE STEEL

EXTERIOR:
SP-6 SANDBLAST
KOPPERS 300M COAL TAR EPOXY 16 MIL MIN

SURFACE AREA: 911.1 SQUARE FEET

SPECIAL INSTRUCTIONS

LABELS ON EDGE

DRY PLUG FITTINGS

SCRAPE OUTSIDE SPATTER

SEAL WELD FOR SPECIAL
COATING OR SAND BLASTING

APPROXIMATE SHIPPING WEIGHT
10125 LBS.

ACE HOUSE PAPER No.

ENG. FILE No.

1-22-99 SUPERCEDES 12-2-97

DRW BY

REV No

1

SHEET

2

OF