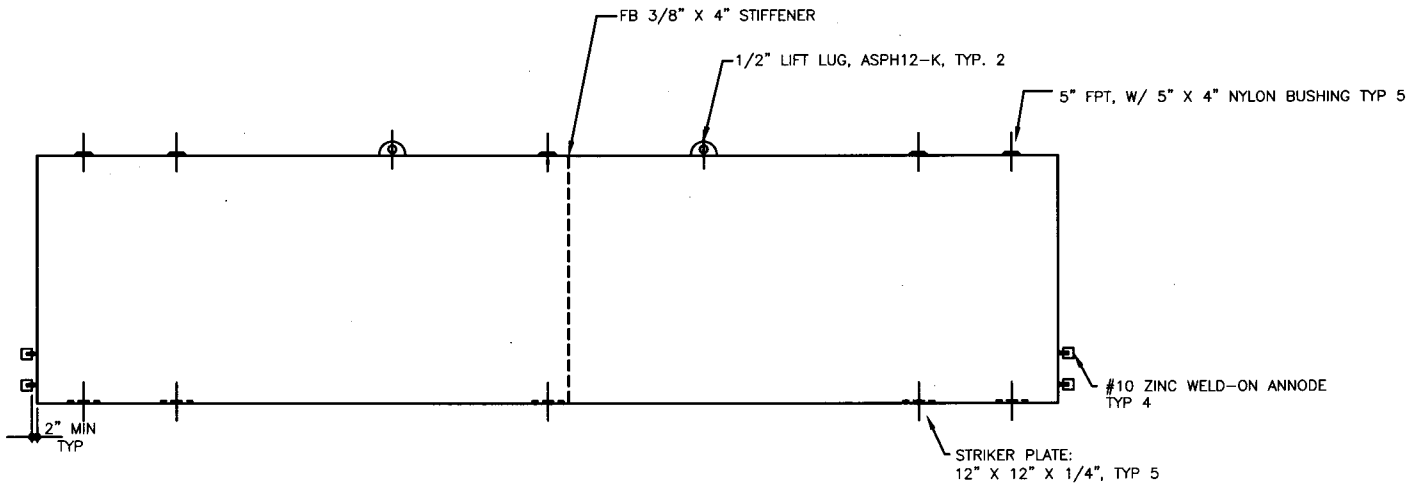
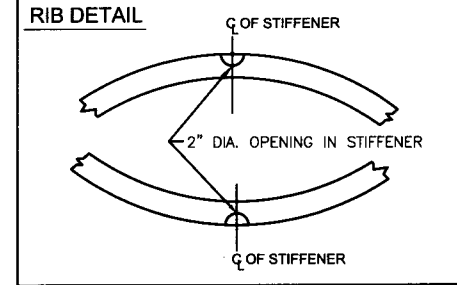
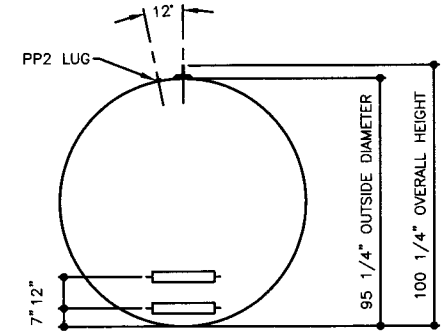


TOP VIEW



ELEVATION - SIDE VIEW



ELEVATION - END VIEW

TOLERANCES TANK CAPACITY -0% / +10 OVERALL LENGTH -0" / +2" OVERALL WIDTH -0" / +1" OVERALL HEIGHT -1/2" / +1/2" OTHER DIMENSIONS -1/4" / +1/4"		UL, 1746 (BUILT & LABELED) ST1, P3 (BUILT & LABELED) SINGLE WALL		STEEL: ASTM A36 PRIMARY TANK SHELL: 2 GAUGE (1/4") HEAD: 2 GAUGE (1/4")		COATING: INTERIOR: BARE STEEL EXTERIOR: SP-6 SANDBLAST KOPPERS 300M COAL TAR EPOXY 16 MIL MIN SURFACE AREA: 911.1 SQUARE FEET		SPECIAL INSTRUCTIONS LABELS ON EDGE DRY PLUG FITTINGS SCRAPE OUTSIDE SPATTER SEAL WELD FOR SPECIAL COATING OR SAND BLASTING		APPROXIMATE SHIPPING WEIGHT 8975 LBS.		DRW BY - REV No 1 SHEET 2 OF -
1-208-281-5000 Acetank & EQUIPMENT COPYRIGHT 1997 ACE TANK & EQUIPMENT		Sti-P3 - 12,000 GALLON		ACE PART No. AC12000U1P1B QTY: 1		ACE HOUSE PAPER No. - ENG. FILE No. - 1-22-99 SUPERCEDES 12-2-97						
(F:1111ACSHOP\STI-P3\U1P1\12000\2-ORTHO.GCD-1:48)												