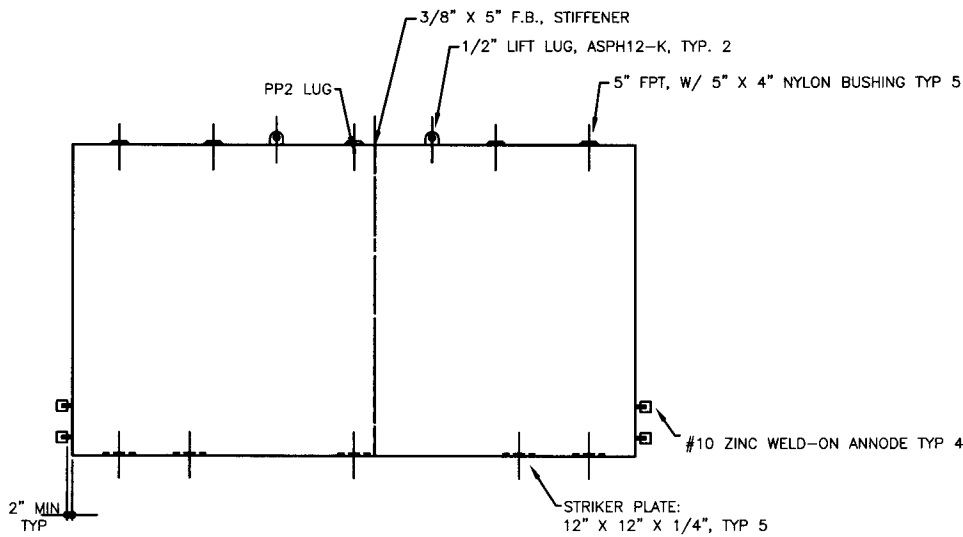
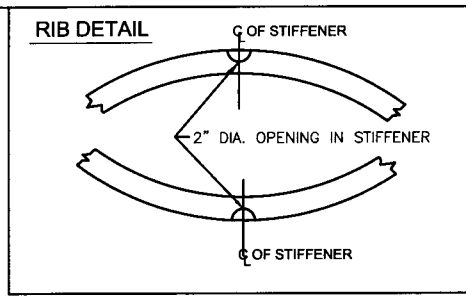
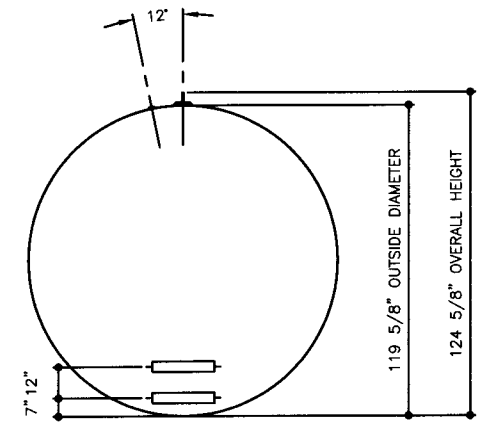


TOP VIEW



ELEVATION - SIDE VIEW



ELEVATION - END VIEW

<b>TOLERANCES</b> TANK		UL, 1746 (BUILT & LABELED) ST1, P3 (BUILT & LABELED) SINGLE WALL	STEEL: ASTM A36 PRIMARY TANK SHELL: 6 GAUGE (3/16") HEAD: 2 GAUGE (1/4")	COATING: INTERIOR: BARE STEEL EXTERIOR: SP-6 SANDBLAST KOPPERS 300M COAL TAR EPOXY 16 MIL MIN SURFACE AREA: 700.2 SQUARE FEET	SPECIAL INSTRUCTIONS LABELS ON EDGE DRY PLUG FITTINGS SCRAPE OUTSIDE SPATTER SEAL WELD FOR SPECIAL COATING OR SAND BLASTING	APPROXIMATE SHIPPING WEIGHT 7875 LBS.	DRW BY - REV No 1 SHEET 2 OF 2
CAPACITY -0% / +10 OVERALL LENGTH -0' / +2" OVERALL WIDTH -0' / +1" OVERALL HEIGHT -1/2" / +1/2" OTHER DIMENSIONS -1/4" / +1/4"		ACE PART No. AC10001U1P1B QTY: 1	2" MIN TYP	12" X 12" X 1/4", TYP 5	#10 ZINC WELD-ON ANODE TYP 4	7" 12"	119 5/8" OUTSIDE DIAMETER 124 5/8" OVERALL HEIGHT
1-206-281-5000 <b>Acetank &amp; EQUIPMENT</b> COPYRIGHT 1997 ACE TANK & EQUIPMENT		St1-P3 - 10,000 GALLON "STUBBY"	(F:111ACSHOPIST1-P31U1P11100012-ORTHO.GCD-1:48)	1-22-99 SUPERCEDES 12-2-97	ACE HOUSE PAPER No. - ENG. FILE No. -	1-22-99 SUPERCEDES 12-2-97	- -