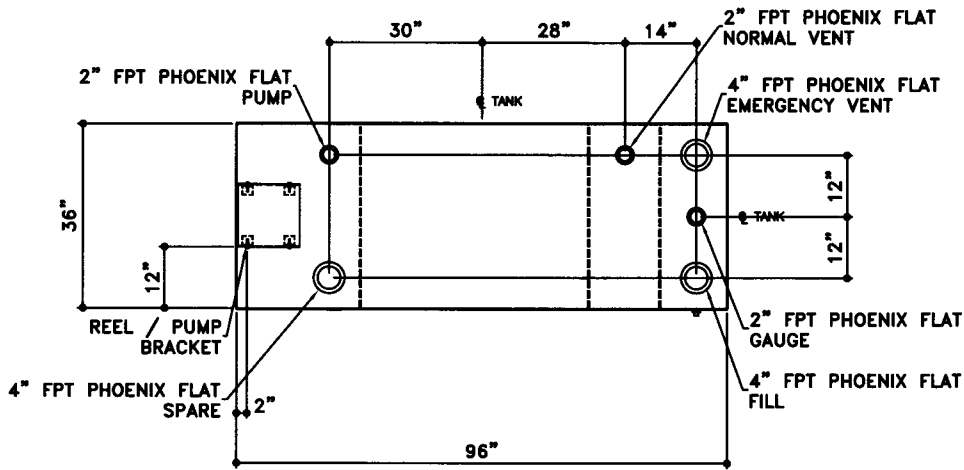
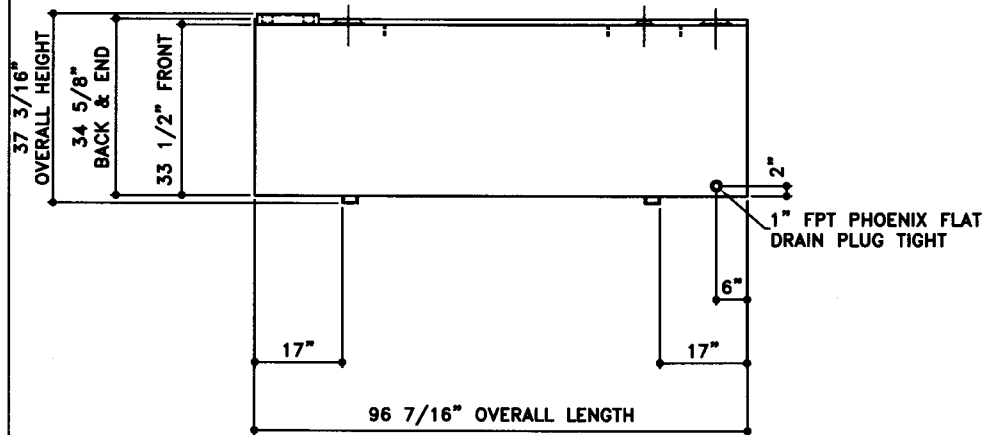


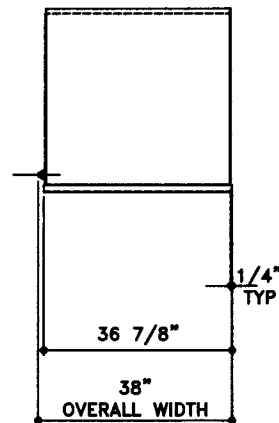
NOTE:
ALL TANK DIMENSIONS ARE INSIDE TO INSIDE



TOP VIEW



ELEVATION - SIDE VIEW



ELEVATION - END VIEW

TOLERANCES TANK CAPACITY -0% / +10 OVERALL LENGTH -0" / +1/2" OVERALL WIDTH -0" / +1/2" OVERALL HEIGHT -0" / +1/2" OTHER DIMENSIONS -1/4" / +1/4"		UL 142 (BUILT & LABELED) SINGLE WALL TANK RECTANGLE TANK		STEEL: ASTM A36 TANK TOP: 10 GAUGE (9/64") SIDE WALL: 6 GAUGE (3/16") END WALL: 12 GAUGE (7/64") BOTTOM: 10 GAUGE (9/64")		COATING: "G" EXTERIOR COATING, ACE 1E GRAY SHOP COAT 1-3 MILS "A" EXTERIOR ACE 3A COATING: SP-6 GRIT BLAST 3A COLOR: #WH01 (WHITE) 1 CT TN-161 EPOXY 3.0-5.0 MILS 1 CT TN-74 URETHANE 2.0-3.0 MILS INTERIOR: TDFT 5.0-8.0 MILS BARE STEEL		SPECIAL INSTRUCTIONS PLUG TIGHT WRENCH PLUG TIGHT WITH PIPE DOPE ON THREADS AND TESTED LEAK FREE.		APPROXIMATE SHIPPING WEIGHT 645 LBS. TANK VENT CAPACITY 94,800 TANK		DRW BY - REV No 1 SHEET 2 OF -
1-208-281-5000 Acetank & EQUIPMENT COPYRIGHT 1997 ACE TANK & EQUIPMENT		Ace BenchTop - 500 GALLON ACE PART No. AC00500U1R3 QTY: 1 (F:\11ACStock\RECTANGL\U1R3\00500\2-ORTH.GCD-1:16)								JOB ID No. - ACE HOUSE PAPER No. - ENG. FILE No. - 01-01-02 SUPERCEDES 09-01-01		