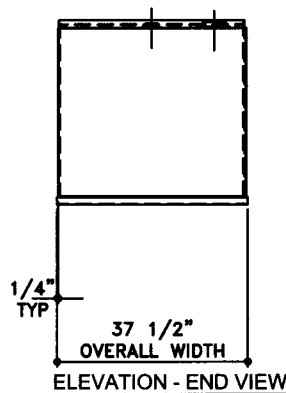
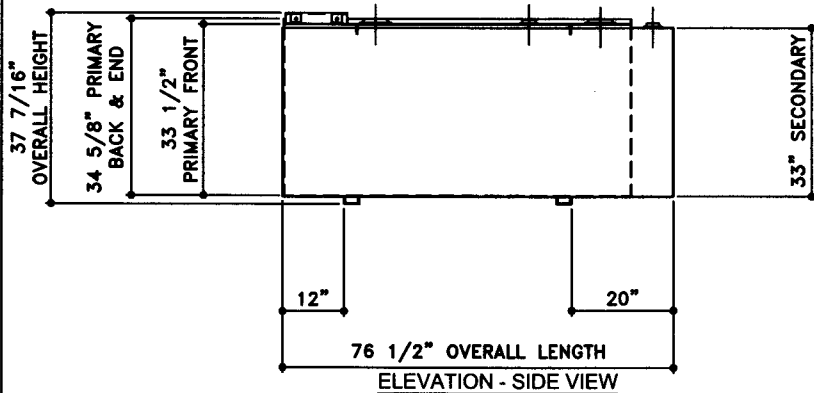
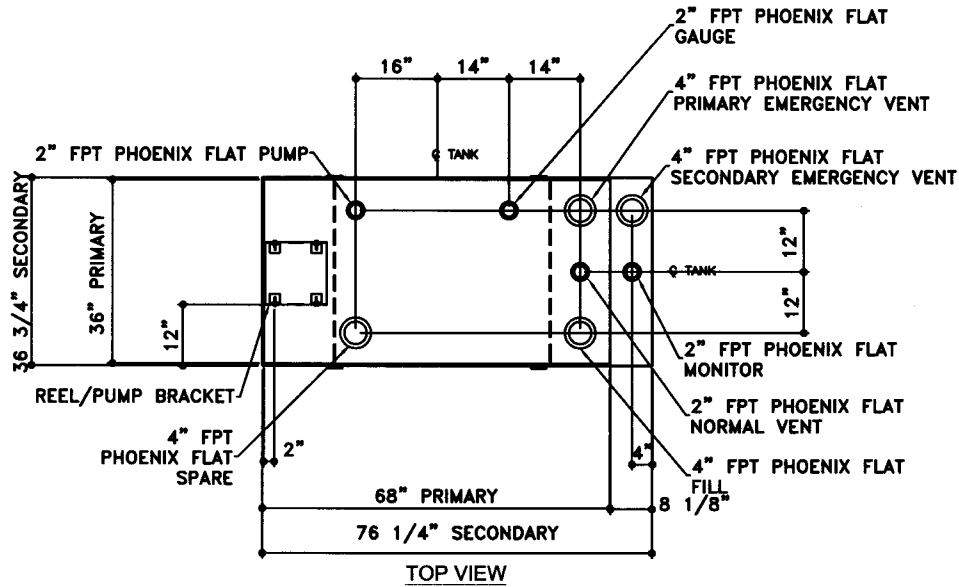


NOTE:  
 ALL TANK DIMENSIONS ARE INSIDE TO INSIDE EXCEPT FOR  
 SECONDARY HEIGHT DIMENSIONS ARE INSIDE BOTTOM TO TOP OF WALL



<b>TOLERANCES</b> <b>TANK</b> CAPACITY -0% / +10 OVERALL LENGTH -0" / +1/2" OVERALL WIDTH -0" / +1/2" OVERALL HEIGHT -0" / +1/2" OTHER DIMENSIONS -1/4" / +1/4"	UL 142 (BUILT & LABELED) DOUBLE WALL TANK RECTANGLE TANK	TANK MATL: A36 PRIMARY TANK: TOP: 10 GAUGE (9/64) SIDE WALL: 6 GAUGE (3/16) END WALL: 12 GAUGE (7/64) BOTTOM: 10 GAUGE (9/64)	COATING: "G" EXTERIOR COATING, ACE 1E LIGHT GRAY SHOP COAT 1-3 MILS "A" EXTERIOR ACE 3A COATING: SP-6 GRIT BLAST 3A COLOR: #WH01 (WHITE) 1 CT TN-161 EPOXY 3.0-5.0 MILS 1 CT TN-74 URETHANE 2.0-3.0 MILS TDFT 5.0-8.0 MILS INTERIOR: BARE STEEL	SPECIAL INSTRUCTIONS PLUG TIGHT WRENCH PLUG TIGHT WITH PIPE DOPE ON THREADS AND TESTED LEAK FREE.	APPROXIMATE SHIPPING WEIGHT: 730 LBS	DRW BY - REV No 1
	<b>Ace BenchTop - 350 GALLON</b> ACE PART No. AC00350U2R3 QTY: 1 (F:111ACSHOPIRECTANGLU2R3100350U2-ORTH.GCD-1:16)	SECONDARY TANK: TOP: 12 GAUGE (7/64) SIDE WALL: 12 GAUGE (7/64) END WALL: 12 GAUGE (7/64) BOTTOM: 12 GAUGE (7/64)			TANK VENT CAPACITY 73,700 PRIMARY TANK 84,200 SECONDARY TANK	SHEET 2
1-206-281-5000 <b>Acetank &amp; EQUIPMENT</b> COPYRIGHT 1997 ACE TANK & EQUIPMENT		JOB ID No. - ACE HOUSE PAPER No. - ENG. FILE No. - 01-01-02 SUPERCEDES 09-01-01		OF		