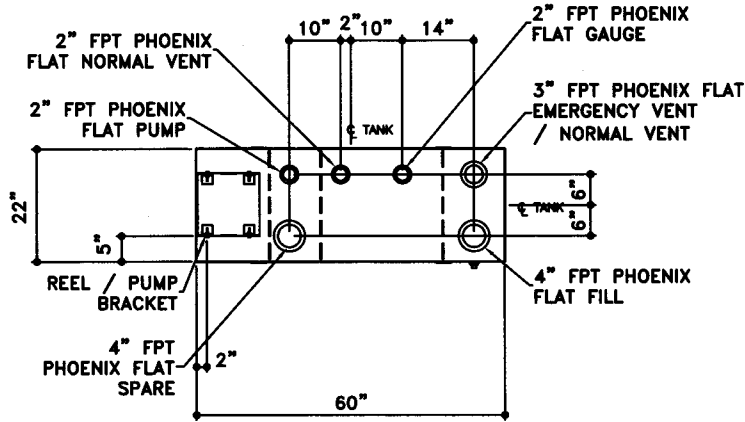
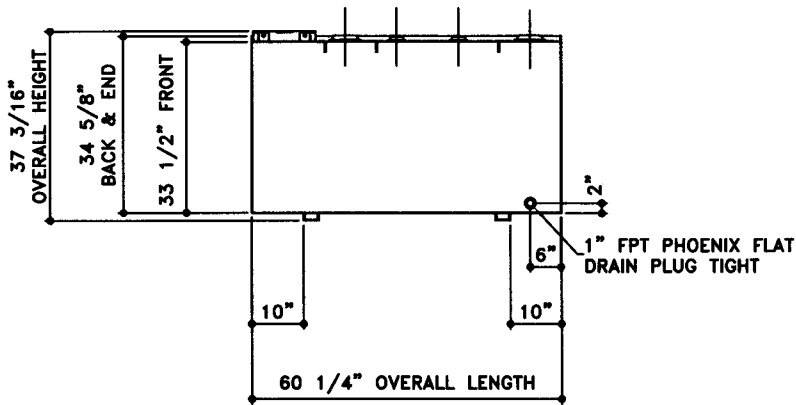


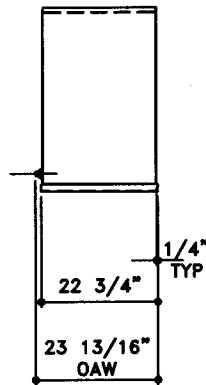
NOTE:  
ALL TANK DIMENSIONS ARE INSIDE TO INSIDE



TOP VIEW



ELEVATION - SIDE VIEW



ELEVATION - END VIEW

<b>TOLERANCES</b> TANK CAPACITY -0% / +10 OVERALL LENGTH -0' / +1/2" OVERALL WIDTH -0' / +1/2" OVERALL HEIGHT -0' / +1/2" OTHER DIMENSIONS -1/4" / +1/4"	UL 142 (BUILT & LABELED) DOUBLE WALL TANK RECTANGLE TANK	STEEL: ASTM A36 TANK TOP: 10 GAUGE (9/64") SIDE WALL: 12 GAUGE (7/64") END WALL: 12 GAUGE (7/64") BOTTOM: 10 GAUGE (9/64")	COATING: "G" EXTERIOR COATING, ACE 1E GRAY SHOP COAT 1-3 MILS "A" EXTERIOR ACE 3A COATING: SP-6 GRIT BLAST 3A COLOR: #WH01 (WHITE) 1 CT TN-161 EPOXY 3.0-5.0 MILS 1 CT TN-74 URETHANE 2.0-3.0 MILS TDFT 5.0-8.0 MILS	SPECIAL INSTRUCTIONS PLUG TIGHT WRENCH PLUG TIGHT WITH PIPE DOPE ON THREADS AND TESTED LEAK FREE.	APPROXIMATE SHIPPING WEIGHT 257 LBS TANK VENT CAPACITY 52,700 PRIMARY	DRW BY - REV No 1 SHEET 2 OF -
1-206-281-5000 <b>Acetank &amp; Equipment</b> COPYRIGHT 1997 ACE TANK & EQUIPMENT <b>Ace BenchTop - 180 GALLON</b> ACE PART No. AC00180U1R3 QTY: 1 (F:111)ACSHOP\RECTANGLIU1R3\00180U2-ORTH.GCD-1:16)		INTERIOR: BARE STEEL		01-01-02 SUPERCEDES 09-01-01		OF