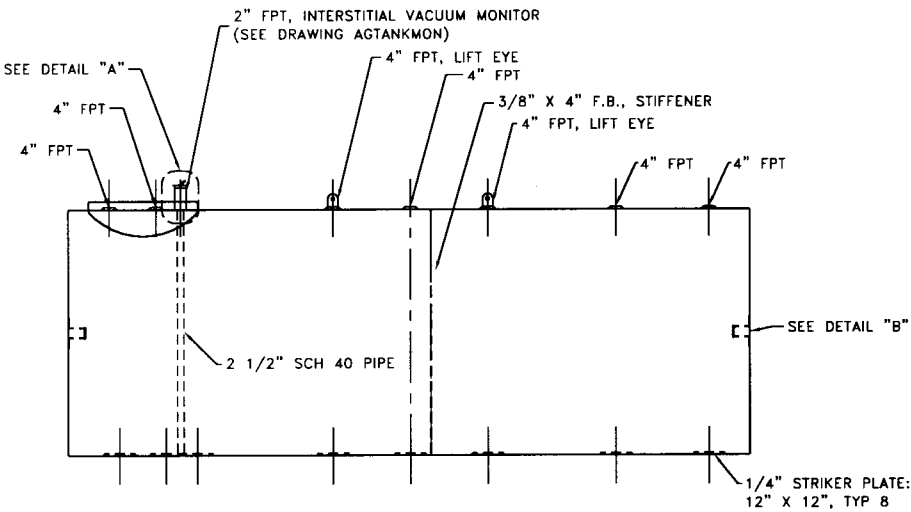
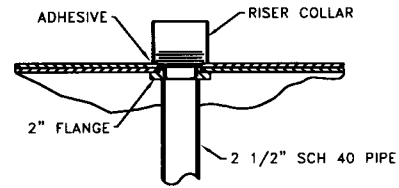


TOP VIEW

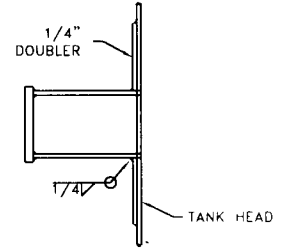


ELEVATION - SIDE VIEW

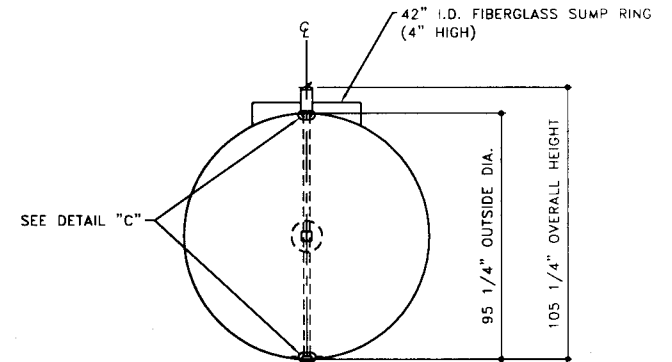
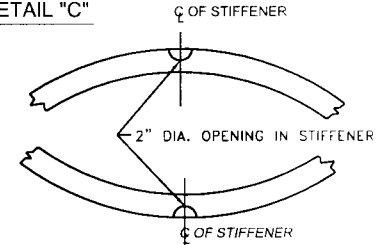
DETAIL "A"



DETAIL "B"



DETAIL "C"



ELEVATION - END VIEW

SERIAL NUMBER AZ0958 AND GREATER

<b>TOLERANCES</b> TANK CAPACITY -0% / +10 OVERALL LENGTH -0" / +2" OVERALL WIDTH -0" / +1" OVERALL HEIGHT -1/2" / +1/2" OTHER DIMENSIONS -1/4" / +1/4"		UL 1746 (BUILT & LABELED) STI, PERMATANK (BUILT & LABELED) DOUBLE WALL PERMATANK		STEEL: ASTM A36 PRIMARY TANK SHELL: 6 ga (3/16") HEAD: 2 ga (1/4")		COATING: EXTERIOR COATING INTERSTITIAL STANDOFF- POLYETHYLENE MESH AND MYLAR SHEETING FRP 100 MIL MIN		SPECIAL INSTRUCTIONS DRY PLUG FITTINGS SCRAPE OUTSIDE SPATTER TANK DIMENSIONS REFER TO STEEL PRIMARY TANK		APPROXIMATE SHIPPING WEIGHT 6,800 LBS	
1-206-281-5000 		<b>PERMATANK - 8,000 GALLON</b>								APPROXIMATE SHIPPING WEIGHT 6,800 LBS	
ACE PART No: AC08000U2Z3C		QTY:				INTERIOR: BARE STEEL				ACE HOUSE PAPER No: - ENG. FILE No: -	
(072197-F:1111)ACSHOPIPERMAIU2Z3B10800012-ORTHO.GCD-1:48										3-4-99 SUPERCEDES 7-24-97	

REV. NO. 1  
SHEET 2  
OF