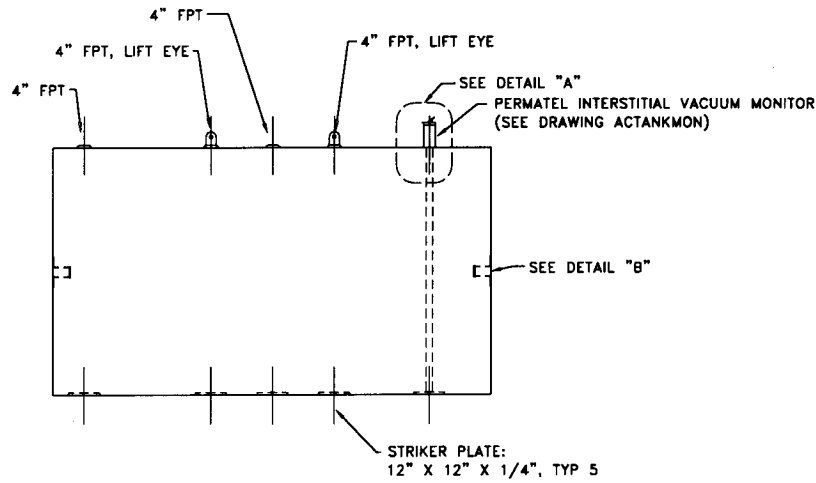
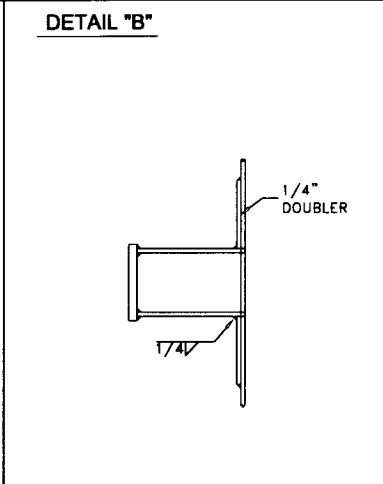
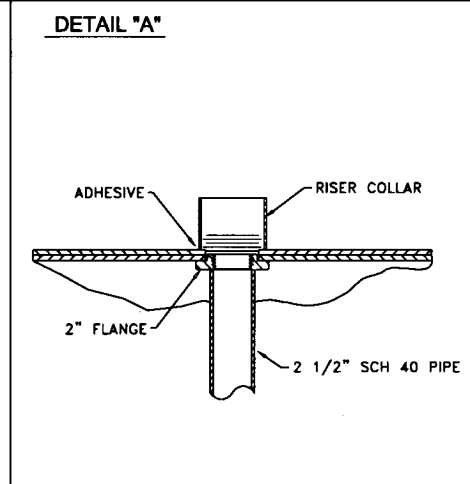
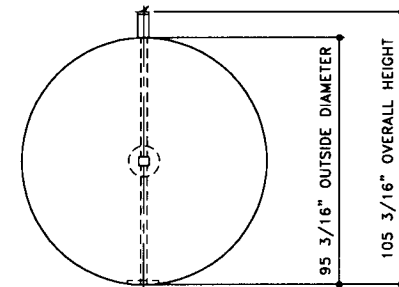


TOP VIEW



ELEVATION - SIDE VIEW



ELEVATION - END VIEW

SERIAL NUMBER AZ0958 AND GREATER

<p>TOLERANCES TANK</p> <p>CAPACITY -0% / +10 OVERALL LENGTH -0" / +2" OVERALL WIDTH -0" / +1" OVERALL HEIGHT -1/2" / +1/2" OTHER DIMENSIONS -1/4" / +1/4"</p>	<p>UL 1746 (BUILT & LABELED) STI, PERMATANK (BUILT & LABELED) DOUBLE WALL PERMATANK</p>	<p>STEEL: ASTM A36 PRIMARY TANK SHELL: (3/16") HEAD: (1/4")</p>	<p>COATING: EXTERIOR COATING INTERSTITIAL STANDOFF- POLYETHYLENE MESH AND MYLAR SHEETING FRP 100 MIL MIN</p>	<p>SPECIAL INSTRUCTIONS DRY PLUG FITTINGS SCRAPE OUTSIDE SPATTER TANK DIMENSIONS REFER TO STEEL PRIMARY TANK</p>	<p>APPROXIMATE SHIPPING WEIGHT 4750 LBS.</p>	<p>DRW BY - REV No 1 SHEET 1</p>
<p>1-206-261-5000 Acetank & EQUIPMENT COPYRIGHT 1987 ACE TANK & EQUIPMENT</p>	<p>PERMATANK - 5,000 GALLON</p> <p>ACE PART No. AC05000U2Z1B</p> <p>(040298-F:1111ACSHOP/PERMAUZZ1B105000U2-ORTHQ.GCD-1:48)</p>		<p>INTERIOR: BARE STEEL</p>		<p>ACE HOUSE PAPER No. - ENG. FILE No. - 3-4-99 SUPERCEDES 7-24-97</p>	<p>OF 1</p>