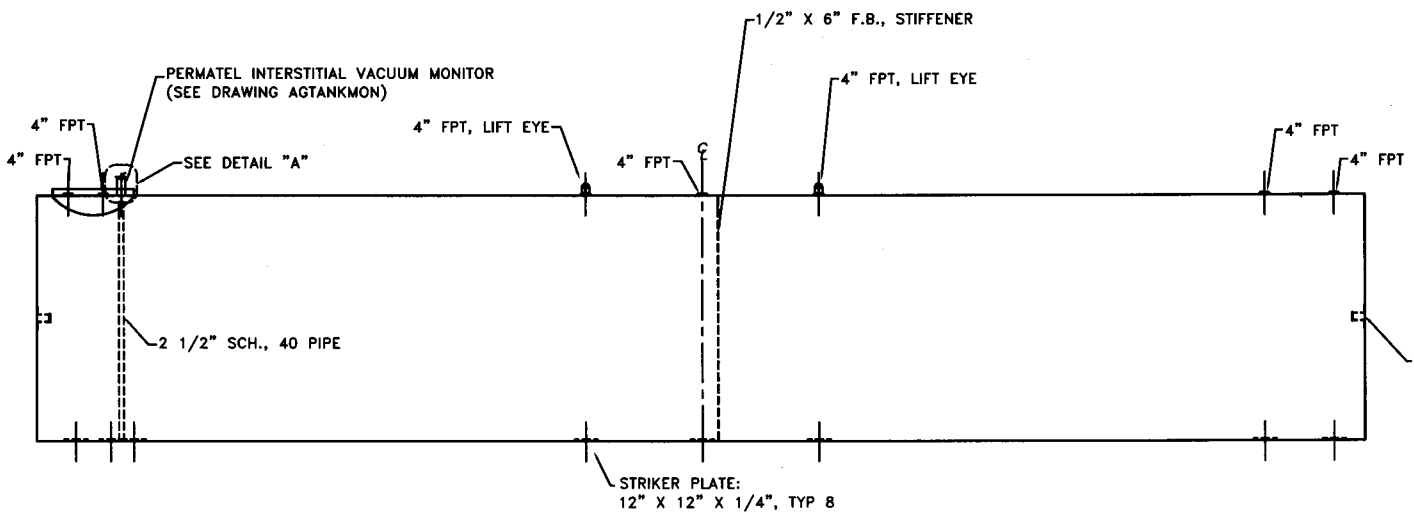
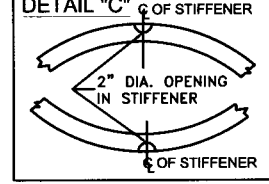
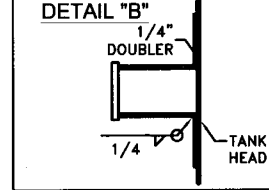
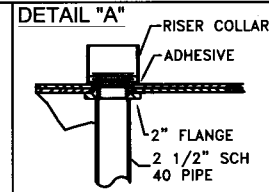
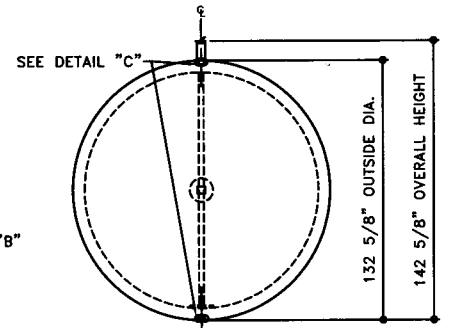


TOP VIEW



ELEVATION - SIDE VIEW



ELEVATION - END VIEW

SERIAL NUMBER AZ0958 AND GREATER

TOLERANCES	
TANK	
CAPACITY	-0% / +10
OVERALL LENGTH	-0" / +2"
OVERALL WIDTH	-0" / +1"
OVERALL HEIGHT	-1/2" / +1/2"
OTHER DIMENSIONS	-1/4" / +1/4"

UL 1746 (BUILT & LABELED)
STI, PERMATANK (BUILT & LABELED)
DOUBLE WALL
PERMATANK

STEEL: ASTM A36
PRIMARY TANK
SHELL: (5/16")
HEAD: (5/16")

COATING:
EXTERIOR COATING
INTERSTITIAL STANDOFF-
POLYETHYLENE MESH AND
MYLAR SHEETING
FRP 100 MIL MIN

SPECIAL INSTRUCTIONS
DRY PLUG FITTINGS
SCRAPE OUTSIDE SPATTER
TANK DIMENSIONS REFER TO
STEEL PRIMARY TANK

APPROXIMATE SHIPPING WEIGHT
31,000 LBS.

PERMATANK - 40,000 GALLON

ACE PART No. **AC40000U2Z3C** QTY: 1

INTERIOR:
BARE STEEL

ACE HOUSE PAPER No. - ENG. FILE No. -
3-4-99 SUPERCEDES 7-21-98



DRW BY
REV No
1
SHEET
2
OF
2