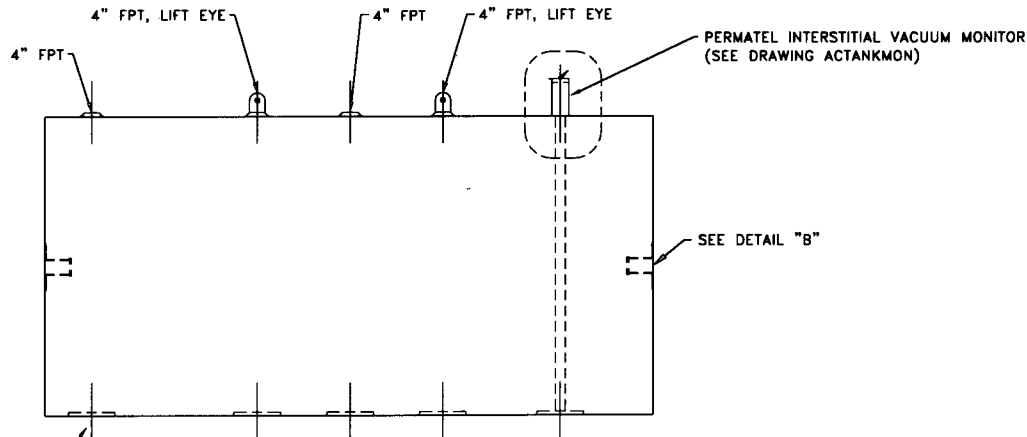
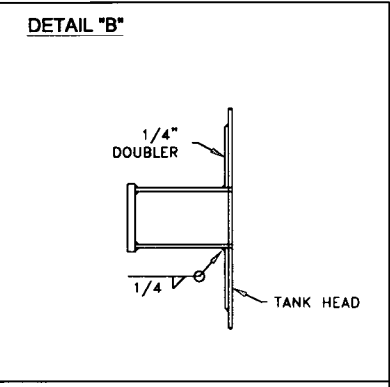
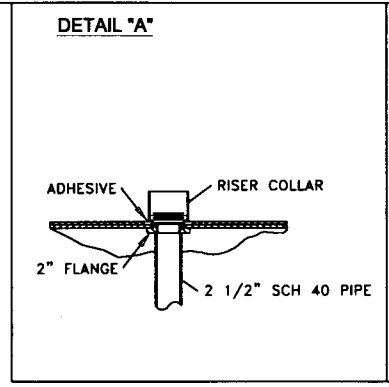
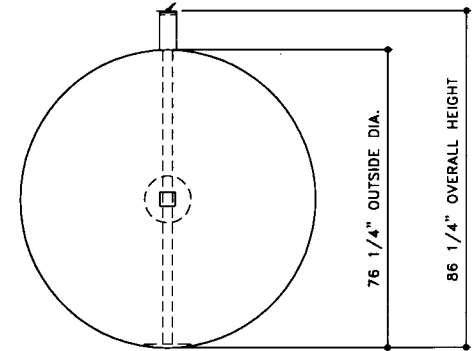


TOP VIEW



ELEVATION - SIDE VIEW



ELEVATION - END VIEW

<p><b>TOLERANCES</b> TANK</p> <p>CAPACITY -0% / +10 OVERALL LENGTH -0" / +2" OVERALL WIDTH -0" / +1" OVERALL HEIGHT -1/2" / +1/2" OTHER DIMENSIONS -1/4" / +1/4"</p>	<p>UL 1746 (BUILT &amp; LABELED) STI, PERMATANK (BUILT &amp; LABELED) DOUBLE WALL PERMATANK</p>	<p>STEEL: ASTM A36 PRIMARY TANK SHELL: 6 GAUGE (3/16") HEAD: 6 GAUGE (3/16")</p>	<p>COATING: EXTERIOR COATING INTERSTITIAL STANDOFF- POLYETHYLENE MESH AND MYLAR SHEETING FRP 100 MIL MIN</p>	<p>SPECIAL INSTRUCTIONS DRY PLUG FITTINGS SCRAPE OUTSIDE SPATTER TANK DIMENSIONS REFER TO STEEL PRIMARY TANK</p>	<p>APPROXIMATE SHIPPING WEIGHT 3,300 LBS.</p>	<p>DRW BY RS REV No 1</p>
<p>1-206-261-5000</p> <p><b>Acotank &amp; EQUIPMENT</b></p> <p>PERMATANK - 3,000 GALLON</p> <p>ACE PART No. AC03000U2Z1B</p> <p>(072397-F:1111ACSHOPPERMAU2Z1B0300002-ORTHO.GCD-1:32)</p>			<p>INTERIOR: BARE STEEL</p>		<p>ACE HOUSE PAPER No. - ENG. FILE No. -</p> <p>3-4-99 SUPERCEDES 7-21-97</p>	<p>SHEET 1 OF 1</p>