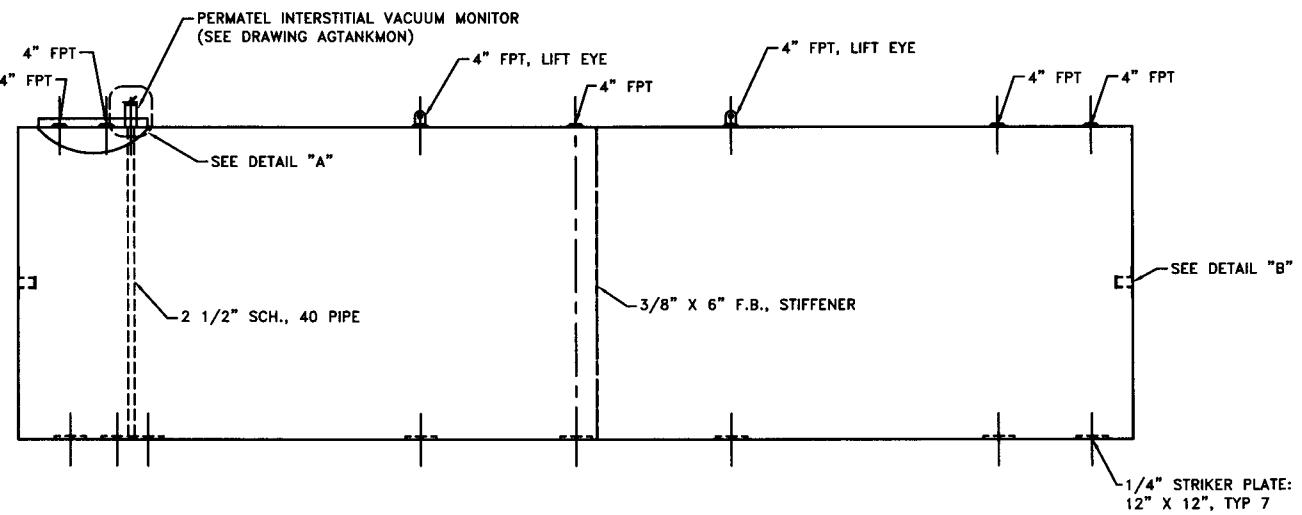
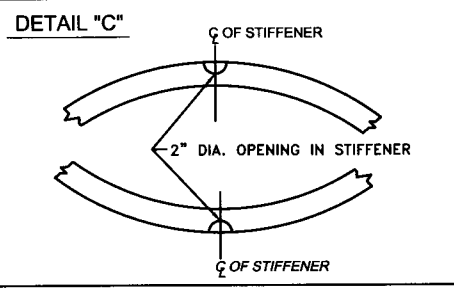
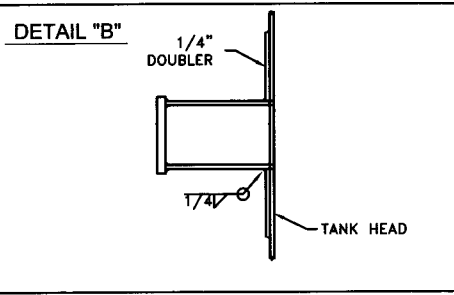
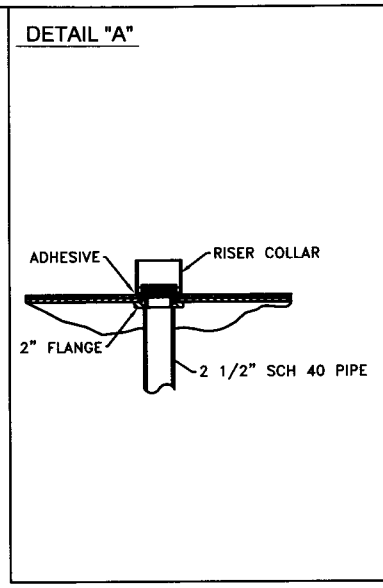
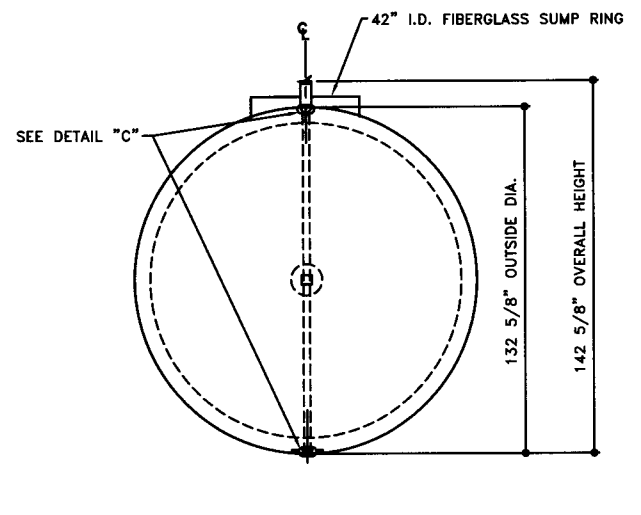


TOP VIEW



ELEVATION - SIDE VIEW



ELEVATION - END VIEW

SERIAL NUMBER AZ0958 AND GREATER

TOLERANCES	
TANK	
CAPACITY	-0% / +10
OVERALL LENGTH	-0" / +2"
OVERALL WIDTH	-0" / +1"
OVERALL HEIGHT	-1/2" / +1/2"
OTHER DIMENSIONS	-1/4" / +1/4"

UL 1746 (BUILT & LABELED)
 STI, PERMATANK (BUILT & LABELED)
 DOUBLE WALL
 PERMATANK

STEEL: ASTM A36
 PRIMARY TANK
 SHELL: 0 ga (5/16")
 HEAD: 0 ga (5/16")

COATING:
 EXTERIOR COATING
 INTERSTITIAL STANDOFF-
 POLYETHYLENE MESH AND
 MYLAR SHEETING
 FRP 100 MIL MIN

SPECIAL INSTRUCTIONS
 DRY PLUG FITTINGS
 SCRAPE OUTSIDE SPATTER
 TANK DIMENSIONS REFER TO
 STEEL PRIMARY TANK

APPROXIMATE SHIPPING WEIGHT
 21,350 LBS.



PERMATANK - 25,000 GALLON

ACE PART No. **AC25000U2Z3C** QTY:

(080497-F:111ACSHOPIPERMAIU2Z3B12500012-ORTHO.GCD-1:48)

INTERIOR:
 BARE STEEL

ACE HOUSE PAPER No. - ENG. FILE No. -
 9-26-00 SUPERCEDES 10-05-99

DRW BY -
 REV No 1
 SHEET 2
 OF