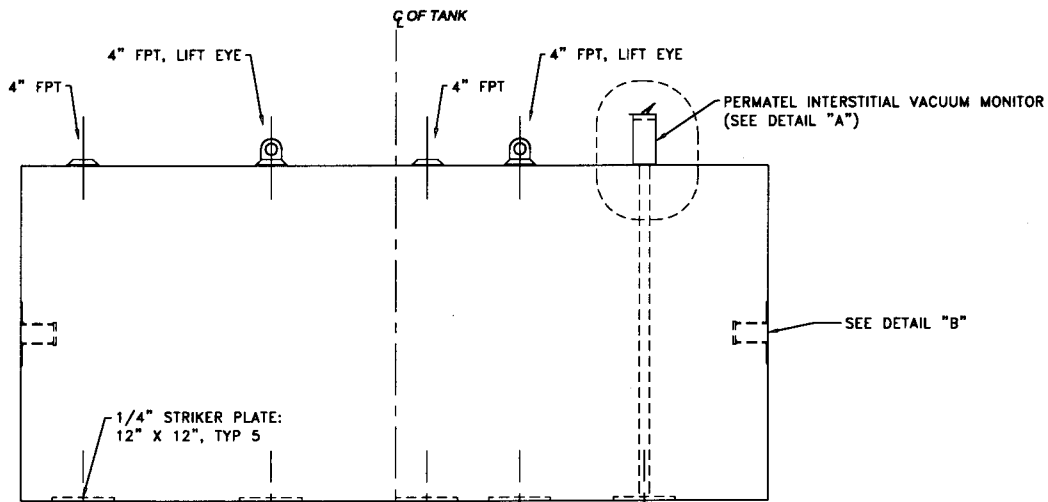
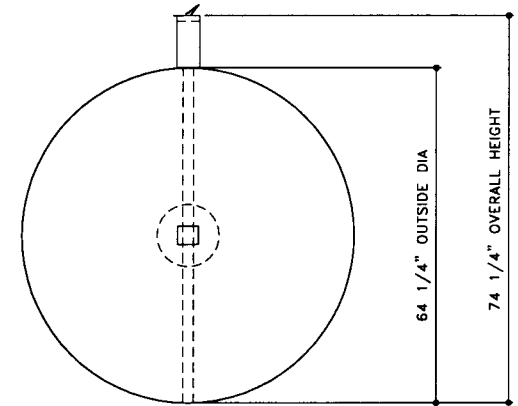
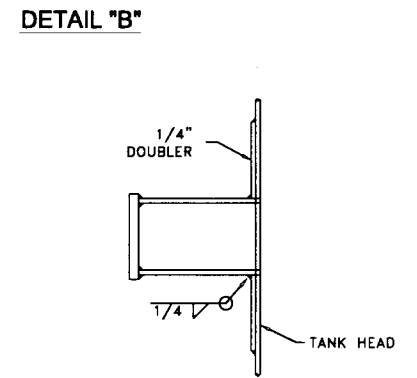
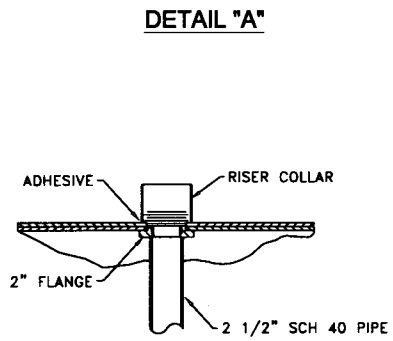


TOP VIEW



ELEVATION - SIDE VIEW



ELEVATION - END VIEW

TOLERANCES	
TANK	
CAPACITY	-0% / +10
OVERALL LENGTH	-0" / +2"
OVERALL WIDTH	-0" / +1"
OVERALL HEIGHT	-1/2" / +1/2"
OTHER DIMENSIONS	-1/4" / +1/4"

UL 1746 (BUILT & LABELED)  
 STI, PERMATANK (BUILT & LABELED)  
 DOUBLE WALL  
 PERMATANK

STEEL: ASTM A36  
 PRIMARY TANK  
 SHELL: 10 GAUGE (9/64")  
 HEAD: 10 GAUGE (9/64")

COATING:  
 EXTERIOR COATING  
 INTERSTITIAL STANDOFF-  
 POLYETHYLENE MESH AND  
 MYLAR SHEETING  
 FRP 100 MIL MIN

SPECIAL INSTRUCTIONS  
 DRY PLUG FITTINGS  
 SCRAPE OUTSIDE SPATTER  
 TANK DIMENSIONS REFER TO  
 STEEL PRIMARY TANK

APPROXIMATE SHIPPING WEIGHT  
 2,100 LBS.

DRW BY  
 RS  
 REV No  
 1  
 SHEET  
 1  
 OF  
 1



PERMATANK -2,000 GALLON  
 ACE PART No. AC02000U2Z1B  
 (072397-F:111)ACSHOPPERMAILU2Z1B0200012-ORTHO.GCD-1:24)

INTERIOR:  
 BARE STEEL

ACE HOUSE PAPER No. -  
 ENG. FILE No. -  
 3-4-99 SUPERCEDES 7-21-97