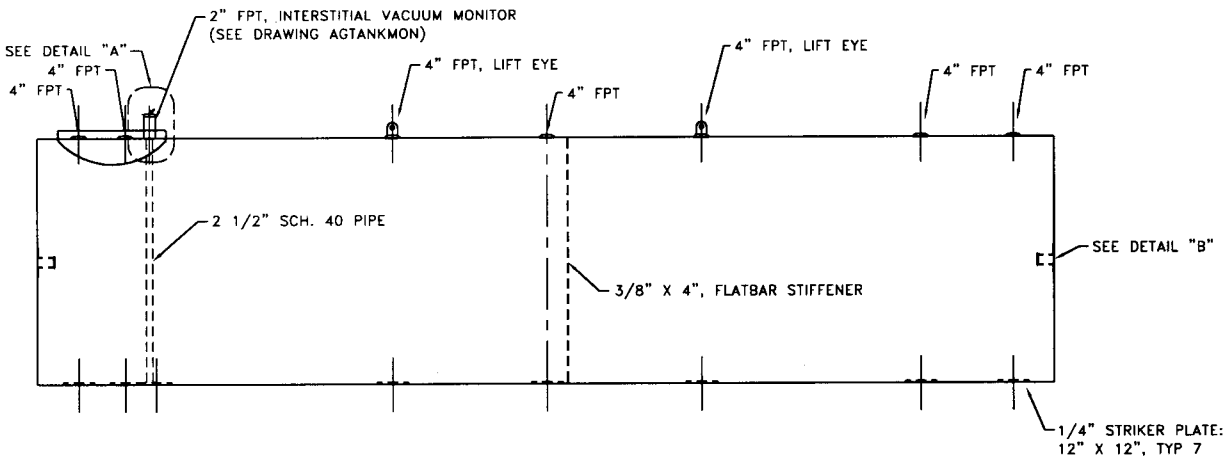
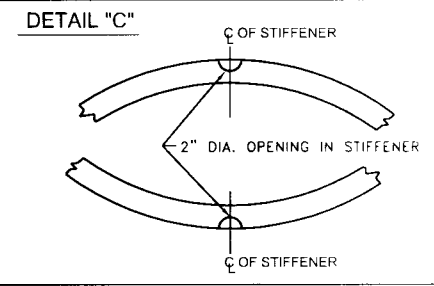
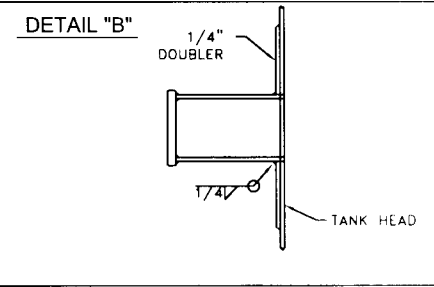
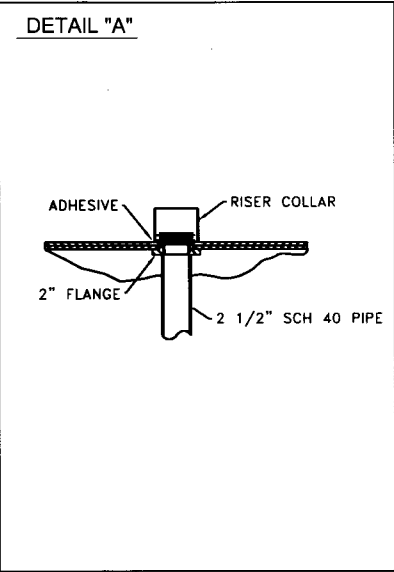
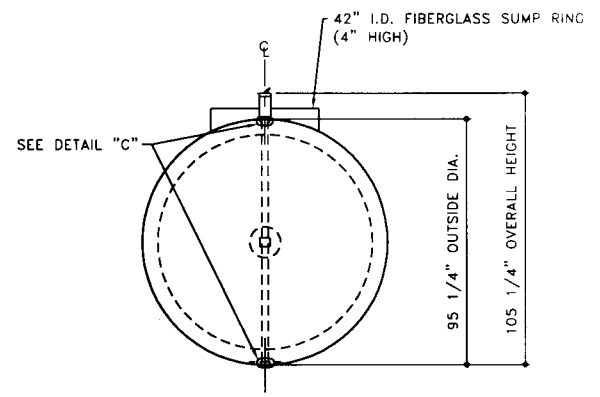


TOP VIEW



ELEVATION - SIDE VIEW



ELEVATION - END VIEW

SERIAL NUMBER AZ0958 AND GREATER

| | | | | | | | |
|--|--|---|--|---|---|--|---|
| TOLERANCES TANK CAPACITY -0% / +10 OVERALL LENGTH -0" / +2" OVERALL WIDTH -0" / +1" OVERALL HEIGHT -1/2" / +1/2" OTHER DIMENSIONS -1/4" / +1/4" | | UL 1746 (BUILT & LABELED) STI, PERMATANK (BUILT & LABELED) DOUBLE WALL PERMATANK | STEEL: ASTM A36 PRIMARY TANK SHELL: 2 ga (1/4") HEAD: 2 ga (1/4") | COATING: EXTERIOR COATING INTERSTITIAL STANDOFF- POLYETHYLENE MESH AND MYLAR SHEETING FRP 100 MIL MIN INTERIOR: BARE STEEL | SPECIAL INSTRUCTIONS DRY PLUG FITTINGS SCRAPE OUTSIDE SPATTER TANK DIMENSIONS REFER TO STEEL PRIMARY TANK | APPROXIMATE SHIPPING WEIGHT 11,525 LBS. | DRAWN BY REV. NO. 1 SHEET 2 OF |
| 1-206-281-5000 Acetank & EQUIPMENT PERMATANK - 12,000 GALLON | | ACE PART No. AC12000U2Z3C QTY: | (040898-F:1111ACSHOP\PERMA\U2Z3B\1200012-ORTHO GCD-1:48) | | ACE HOUSE PAPER No. ENG. FILE No. | 3-4-99 SUPERCEDES 8-04-97 | COPYRIGHT 1997 ACE TANK & EQUIPMENT |