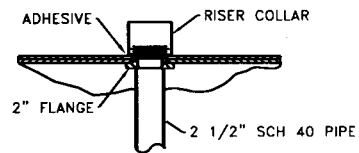
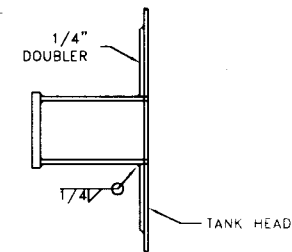


TOP VIEW

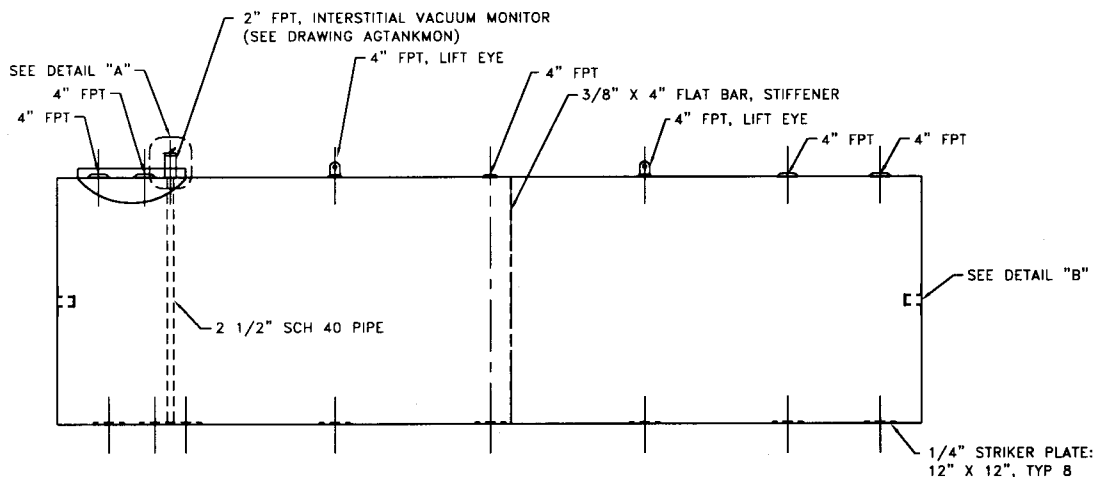
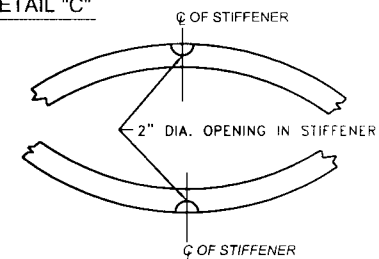
DETAIL "A"



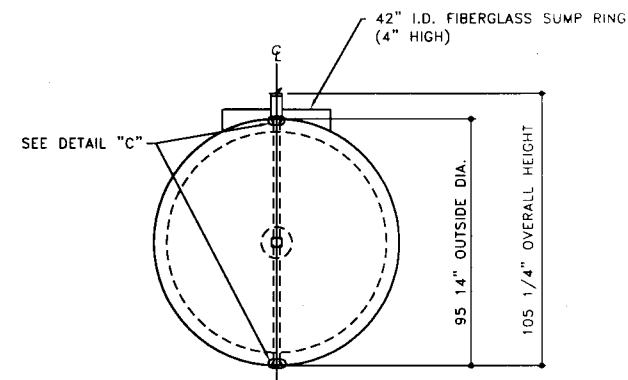
DETAIL "B"



DETAIL "C"



ELEVATION - SIDE VIEW



ELEVATION - END VIEW

SERIAL NUMBER AZ0958 AND GREATER

TOLERANCES TANK CAPACITY -0% / +10 OVERALL LENGTH -0' / +2' OVERALL WIDTH -0' / +1" OVERALL HEIGHT -1/2' / +1/2" OTHER DIMENSIONS -1/4' / +1/4"	UL 1746 (BUILT & LABELED) STI, PERMATANK (BUILT & LABELED) DOUBLE WALL PERMATANK	STEEL: ASTM A36 PRIMARY TANK SHELL: 6 ga (3/16") HEAD: 2 ga (1/4")	COATING: EXTERIOR COATING INTERSTITIAL STANDOFF- POLYETHYLENE MESH AND MYLAR SHEETING FRP 100 MIL MIN	SPECIAL INSTRUCTIONS DRY PLUG FITTINGS SCRAPE OUTSIDE SPATTER TANK DIMENSIONS REFER TO STEEL PRIMARY TANK	APPROXIMATE SHIPPING WEIGHT 8,150 LBS.	DWG BY - REV No 1 SHEET 2 OF
	1-206-281-5000 Acetank & EQUIPMENT PERMATANK - 10,000 GALLON ACE PART No. AC10000U2Z3C QTY: (040798-F:1111ACSHOP/PERMA/U2ZBB/1000012-ORTHO.GCD-1:48)	INTERIOR: BARE STEEL	ACE HOUSE PAPER No. - ENG. FILE No. - 3-4-99 SUPERCEDES 7-24-97			