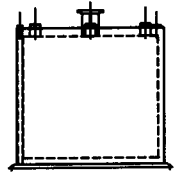
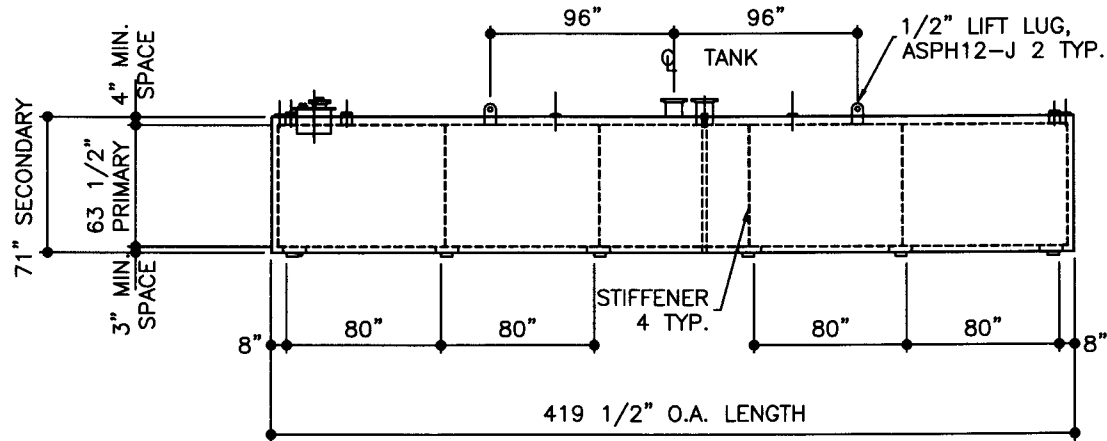
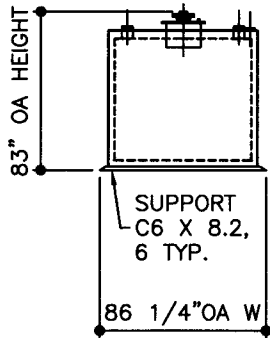
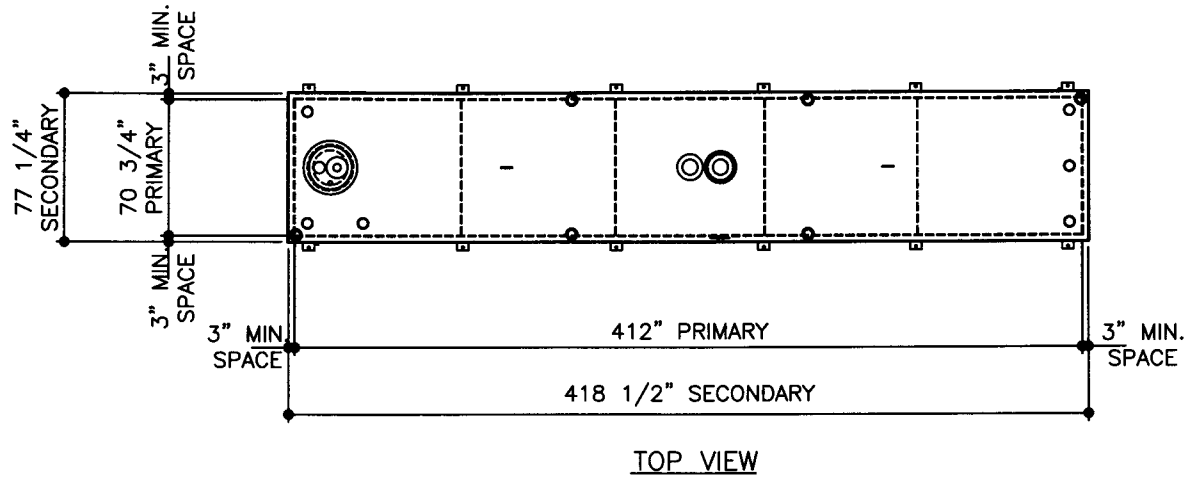


NOTE:
PRIMARY AND SECONDARY
TANK DIMENSIONS ARE
INSIDE DIMENSIONS



ELEVATION - END VIEW

ELEVATION - SIDE VIEW

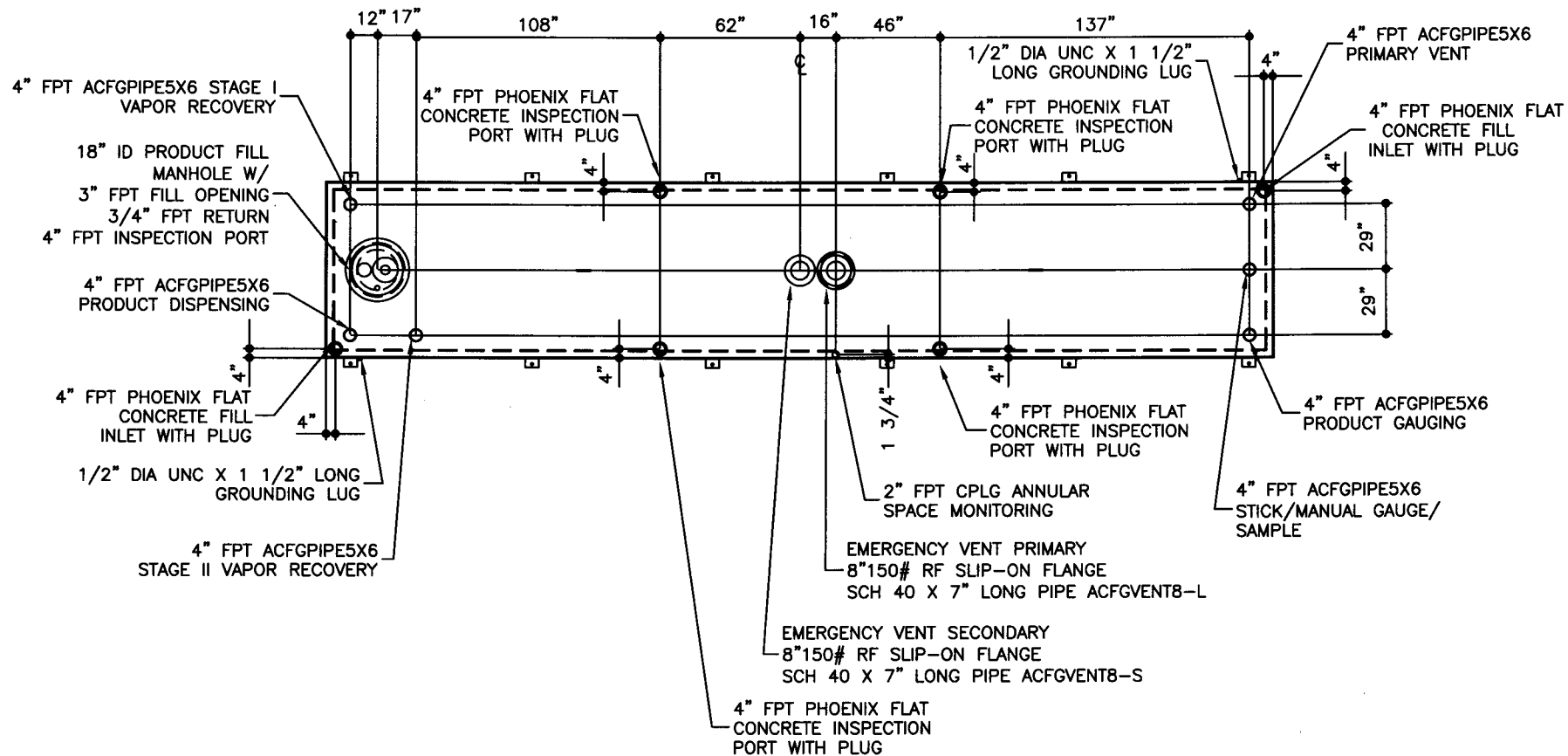
ELEVATION - END VIEW

| | | | | | | |
|---|---|--|---|--|---|---------------------------------------|
| TOLERANCES TANK CAPACITY -0% / +10 OVERALL LENGTH -0" / +2" OVERALL WIDTH -0" / +1" OVERALL HEIGHT -1/2" / +1/2" OTHER DIMENSIONS -1/4" / +1/4" | UL 2085 (BUILT & LABELED) UL 142 (BUILT & LABELED) | STEEL: ASTM A36 INNER TANK: TOP: 6 GAUGE (3/16") SIDE WALLS: 6 GAUGE (3/16") END WALLS: 6 GAUGE (3/16") BOTTOM: 6 GAUGE (3/16") | COATING: EXTERIOR ACE 3A COATING: SP-6 GRIT BLAST 3A COLOR: #WH01 (WHITE) 1 CT TN-161 EPOXY 3.0-5.0 MILS 1 CT TN-74 URETHANE 2.0-3.0 MILS TDFT 5.0-8.0 MILS | SPECIAL INSTRUCTIONS FILL ANNULAR SPACE WITH PORTLAND CEMENT / PERLITE, CEMENT GRADE MIX. LEAVE 1" AIR GAP BETWEEN PERLITE TOP & SECONDARY TANK 289 CUBIC FEET | APPROXIMATE SHIPPING WEIGHT: 27,200 LBS. WITH CEMENT 19,750 LBS. WITHOUT CEMENT TANK VENT CAPACITY 428,000 PRIMARY 462,000 SECONDARY | DRW BY - REV NO 1 SHEET 2 OF |
| | HOLD-DOWNS ARE SEISMIC RATED DOUBLE WALL WITH 3" INSULATION RECTANGLE FIREGUARD WITH SUPPORTS | OUTER TANK: TOP: 2 GAUGE (1/4") SIDE WALLS: 6 GAUGE (3/16") END WALLS: 6 GAUGE (3/16") BOTTOM: 6 GAUGE (3/16") | SURFACE AREA: 997 SQUARE FEET INTERIOR: BARE STEEL SURFACE AREA: 901 SQUARE FEET | TANK VENT CAPACITY 428,000 PRIMARY 462,000 SECONDARY | JOB ID No. - ACE HOUSE PAPER No. - ENG. FILE NO. - | 01-01-02 SUPERCEDES 09-01-01 |



FIREGUARD - 8,000 GALLON

ACE PART No. AC08000U2G3 QTY: 1
(F:11ACSTOCK\FIREGUARDIU2G3-31015002-ORTHO.GCD-1.64)



TOP VIEW

| | | | | | | | | | | | |
|---------------------|---|---|----------|--|------------------------------|---------------|--------------------|---|----------|------------|-------|
| JOB ID No. | - | TOLERANCES OPENING LAYOUT ALL DIMENSIONS $-1/4" \pm 1/4"$ | QUANTITY | PART NAME 8,000 GALLON RECTANGLE FIREGUARD ACE PART No. AC08000U2G3 <small>(F:\11ACSHOPI\FIREGUARD\U2G1-3I-1-24)</small> | No. | | DRAWING / REVISION | | DRAWN BY | CHECKED BY | SHEET |
| ACE HOUSE PAPER No. | - | | 1 | | 1 | 1ST SUBMITTAL | - | - | - | - | OF |
| ENGG. FILE No. | - | | 48 | | - | - | - | - | - | - | - |
| | | | | | 01-01-02 SUPERCEDES 10-01-01 | | | | | | |