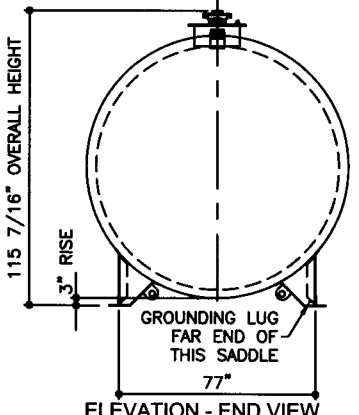
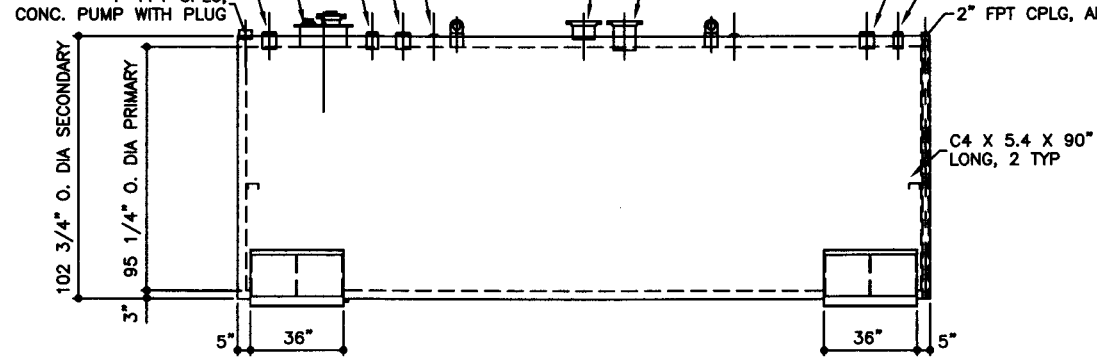


TOP VIEW

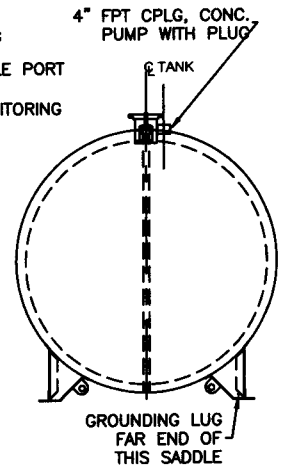
- 2" FPT PHOENIX FLAT, CONC PORT WITH PLUG, 2 TYP
- 4" FPT ACFGPIPE5X6, AUXILIARY STAGE II, VAPOR RECOVERY
- 3" FPT ACFGPIPE4X9, VENT PRIMARY STAGE I VAPOR RECOVERY
- 18" ID PRODUCT FILL MANHOLE W/ 3" FPT FILL OPENING 3/4" FPT RETURN
- 4" FPT INSPECTION PORT
- 4" FPT ACFGPIPE5X6, PRODUCT DISPENSING / PUMP
- 4" FPT CPLG, CONC. PUMP WITH PLUG
- EMERGENCY VENT SECONDARY 8" 150# RF SLIP-ON FLANGE SCH 40 X 7" LONG PIPE ACFGVENT8-S
- EMERGENCY VENT PRIMARY 8" 150# RF SLIP-ON FLANGE SCH 40 X 11" LONG PIPE ACFGVENT8-L
- 4" FPT ACFGPIPE5X6, PRODUCT GAUGING
- 2" FPT ACFGPIPE3X9, STICK / SAMPLE PORT
- 2" FPT CPLG, ANNULAR SPACE MONITORING



ELEVATION - END VIEW



ELEVATION - SIDE VIEW



ELEVATION - END VIEW

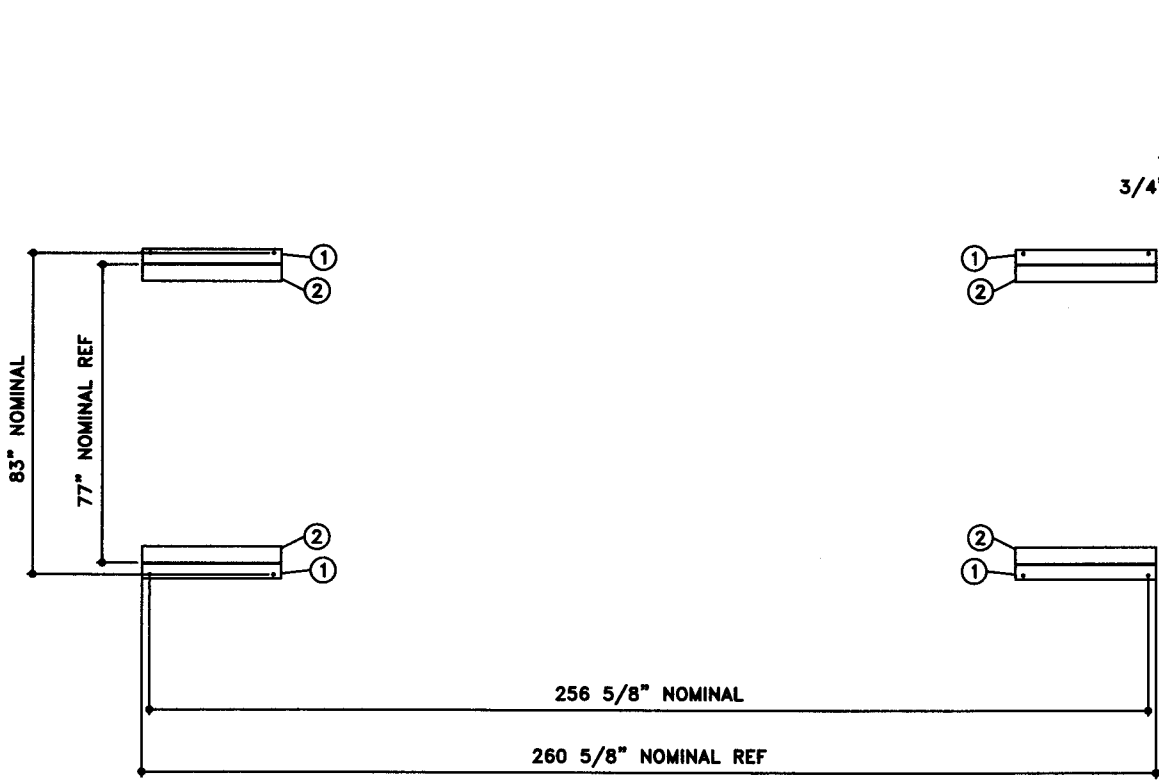
<b>TOLERANCES</b> <b>TANK</b> CAPACITY -0% / +10 OVERALL LENGTH -0" / +2" OVERALL WIDTH -0" / +1" OVERALL HEIGHT -1/2" / +1/2" OTHER DIMENSIONS -1/4" / +1/4"		<b>UL 142 (BUILT &amp; LABELED)</b> <b>UL 2085 (BUILT &amp; LABELED)</b> <b>STI-F941 (BUILT &amp; LABELED)</b> HOLDDOWNS ARE SEISMIC RATED DOUBLE WALL WITH 3" INSULATION CYLINDRICAL FIREGUARD WITH SUPPORTS		<b>STEEL: ASTM A36</b> <b>PRIMARY TANK</b> SHELL: 2 GAUGE (1/4") HEAD: 2 GAUGE (1/4")		<b>COATING:</b> <b>EXTERIOR ACE 3A COATING:</b> SP-6 GRIT BLAST 3A COLOR: #WH01 (WHITE) 1 CT TN-161 EPOXY 3.0-5.0 MILS 1 CT TN-74 URETHANE 2.0-3.0 MILS TDFT 5.0-8.0 MILS		<b>SPECIAL INSTRUCTIONS</b> FILL ANNULAR SPACE WITH PORTLAND CEMENT / PERLITE, CEMENT GRADE MIX. LEAVE 1" AIR GAP BETWEEN PERLITE & SECONDARY TANK INTERSTITIAL SPACE: 207 CUBIC FEET		<b>APPROXIMATE SHIPPING WEIGHT</b> 24,375 LBS. 17,775 LBS. (WITHOUT CEMENT) <b>TANK VENT CAPACITY</b> 354,000 PRIMARY 392,000 SECONDARY		DRAW BY - REV No 1 SHEET 2 OF
<b>1-206-281-5000</b> <b>Acetank &amp; Equipment</b> COPYRIGHT 1997 ACE TANK & EQUIPMENT		<b>FIREGUARD - 8,000 GALLON</b> ACE PART No. AC08000U2G1 QTY: 1 (F:111ACSHOPIFIREGARDU2G1-310800012-ORTHO.GCD-1:48)		<b>SECONDARY TANK</b> SHELL: 2 GAUGE (1/4") HEAD: 0 GAUGE (5/16")		<b>INTERIOR:</b> BARE STEEL		JOB ID No. - ACE HOUSE PAPER No. - ENG. FILE No. - 01-01-02 SUPERCEDES 10-01-01				

# BILL OF MATERIAL

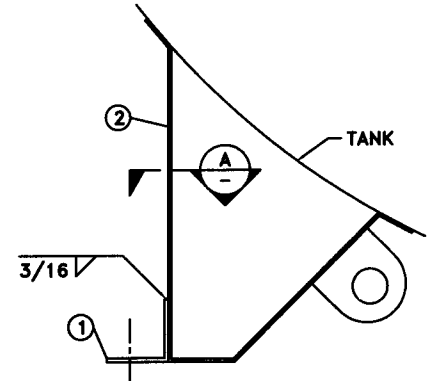
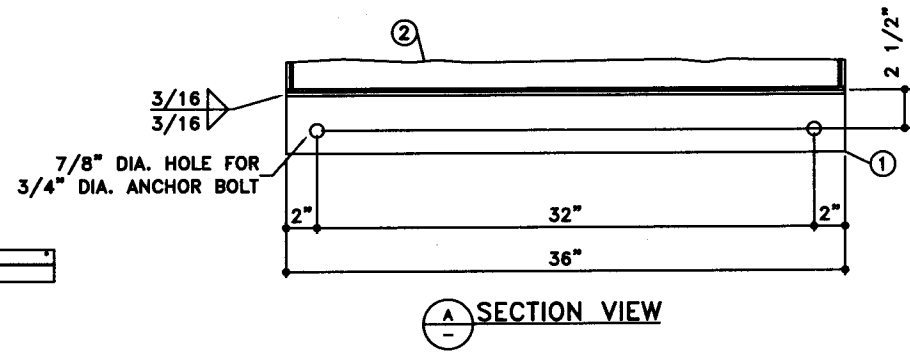
ITEM	QTY	NAME	DESCRIPTION	MATL	PART No.	NOTES
1	4	HOLD DOWN	L4 X 4 X 1/4 X 36" LONG	A36	-	-
2	-	SADDLE	-	-	-	SEE DETAIL SHT

**NOTE:**

1. ALL NOMINAL DIMENSIONS ARE 2"±



**HOLDDOWN - TOP VIEW**



**SEISMIC HOLD DOWN**

JOB ID No.	TOLERANCES
-	<b>SEISMIC HOLD DOWN</b>
ACE HOUSE PAPER No.	OVERALL LENGTH -1/16" / +1/16"
-	OVERALL WIDTH -1/16" / +1/16"
ENGG. FILE No.	OVERALL HEIGHT -1/16" / +1/16"
-	OTHER DIMENSIONS -1/16" / +1/16"

QUANTITY	PART NAME
1	SEISMIC HOLD DOWN - DETAIL
	ACE PART No. AC08000U2G1
	(1:08)

No.	DRAWING / REVISION	DRAWN BY	CHECKED BY	SHEET
1	1ST SUBMITTAL	-	-	OF
-	-	-	-	-
-	-	-	-	-
-	-	-	-	-
01-01-01 SUPERCEDES				