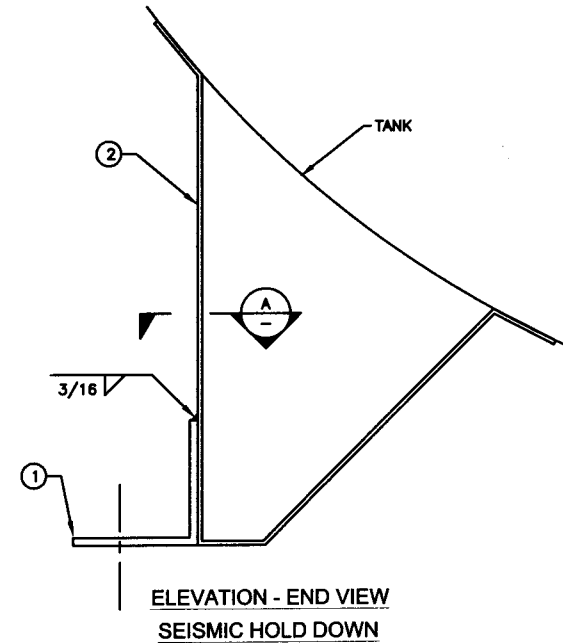
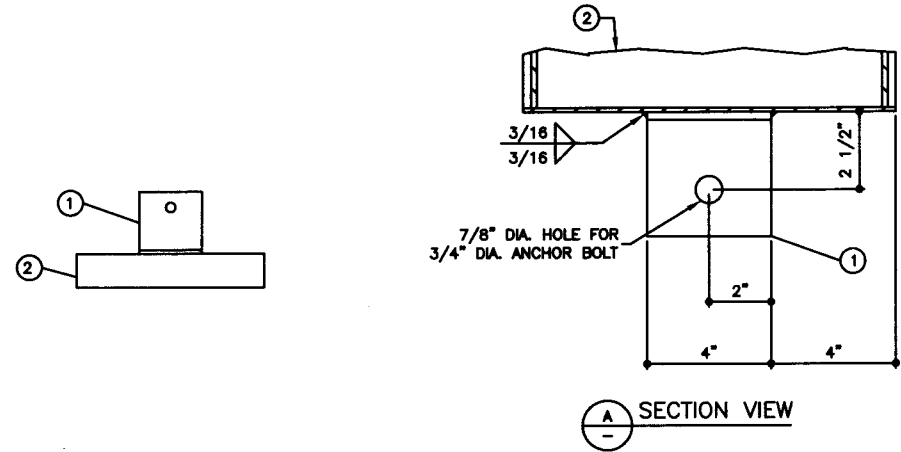
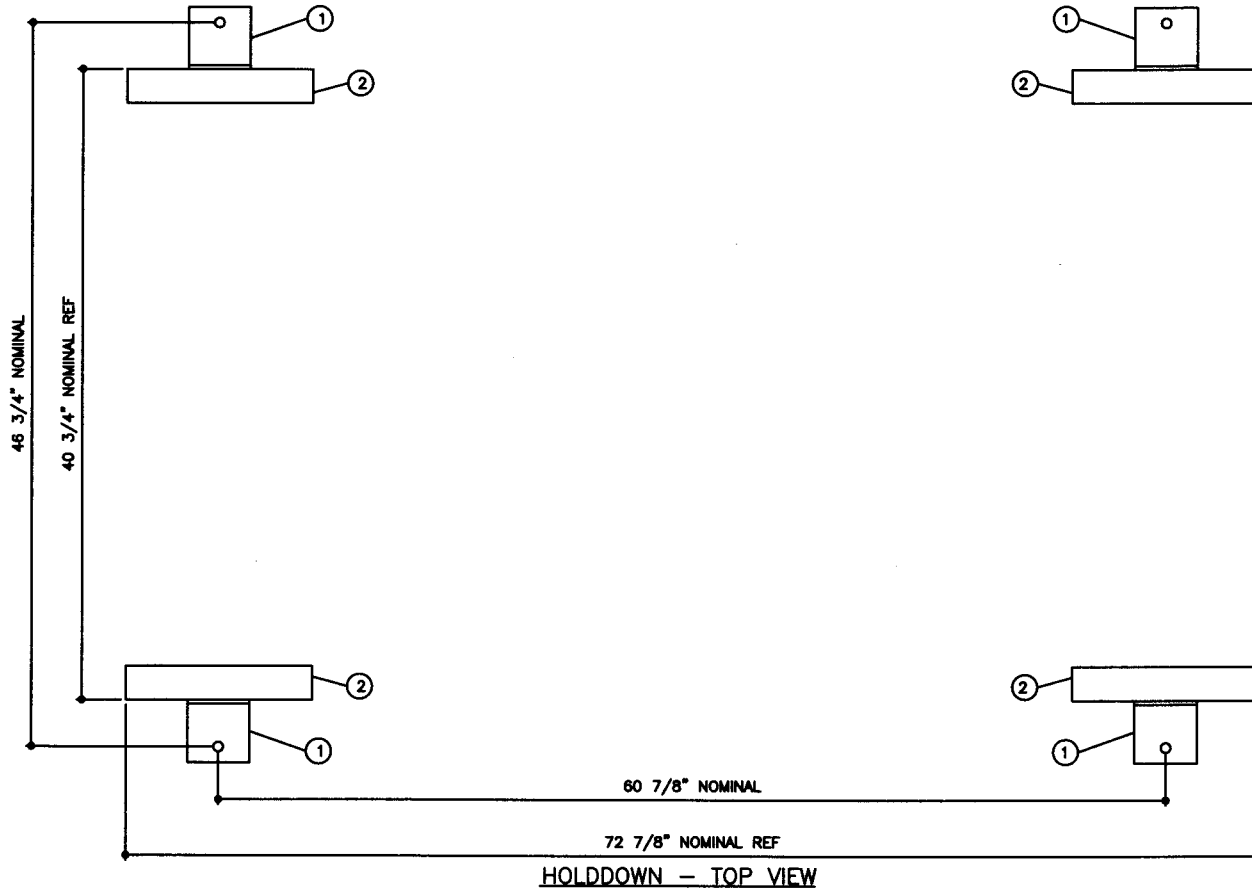


TOLERANCES		STEEL: ASTM A36	COATING:	SPECIAL INSTRUCTIONS	APPROXIMATE SHIPPING WEIGHT	DRW BY
TANK						PRIMARY TANK
CAPACITY	-0% / +10	SHELL: 10 GAUGE (9/64")	EXTERIOR ACE 3A COATING:	FILL ANNULAR SPACE WITH	3,325 LBS.	-
OVERALL LENGTH	-0" / +2"	HEAD: 10 GAUGE (9/64")	SP-6 GRIT BLAST	PORTLAND CEMENT / PERLITE,	2,275 LBS. (WITHOUT CEMENT)	1
OVERALL WIDTH	-0" / +1"		3A COLOR: #WH01 (WHITE)	CEMENT GRADE MIX.	TANK VENT CAPACITY	-
OVERALL HEIGHT	-1/2" / +1/2"		1 CT TN-161 EPOXY 3.0-5.0 MILS	LEAVE 1" AIR GAP BETWEEN	84,200 PRIMARY	SHEET
OTHER DIMENSIONS	-1/4" / +1/4"		1 CT TN-74 URETHANE 2.0-3.0 MILS	PERLITE & SECONDARY TANK	105,000 SECONDARY	2
	1-206-281-5000		TDFE 5.0-8.0 MILS	INTERSTITIAL SPACE: 33 CUBIC FEET		OF
FIREGUARD - 550 GALLON						
ACE PART No.	AC00550U2G1	QTY: 1				
(F:\11\TACSHOP\FIREGUARD\U2G1-3\00550\2-ORTHO.GCD-1.32)						
JOB ID No.		ACE HOUSE PAPER No.	ENG. FILE No.	01-01-02 SUPERCEDES 10-01-01		

BILL OF MATERIAL

ITEM	QTY	NAME	DESCRIPTION	MATL	PART No.	NOTES
1	4	HOLD DOWN	L4 X 4 X 1/4 X 4" LONG	A36	-	-
2	-	SADDLE	-	-	-	SEE DETAIL SHT

NOTE:
1. ALL NOMINAL DIMENSIONS ARE 2"±



P.O. Box 9039
Seattle, WA 98109-0039

JOB ID No.	TOLERANCES
-	SEISMIC HOLD DOWN
ACE HOUSE PAPER No.	OVERALL LENGTH -1/16" / +1/16"
-	OVERALL WIDTH -1/16" / +1/16"
ENGG. FILE No.	OVERALL HEIGHT -1/16" / +1/16"
-	OTHER DIMENSIONS -1/16" / +1/16"

QUANTITY	PART NAME
1	SEISMIC HOLD DOWN - DETAIL
-	-
-	ACE PART No. AC00550U2G1
(1.04)	-

No.	DRAWING / REVISION	DRAWN BY	CHECKED BY	SHEET
1	1ST SUBMITTAL	-	-	OF
-	-	-	-	-
-	-	-	-	-
-	-	-	-	-
01-01-01 SUPERCEDES				