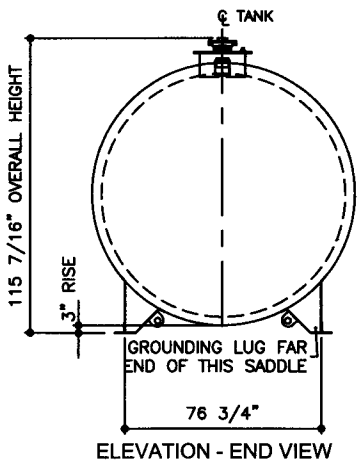
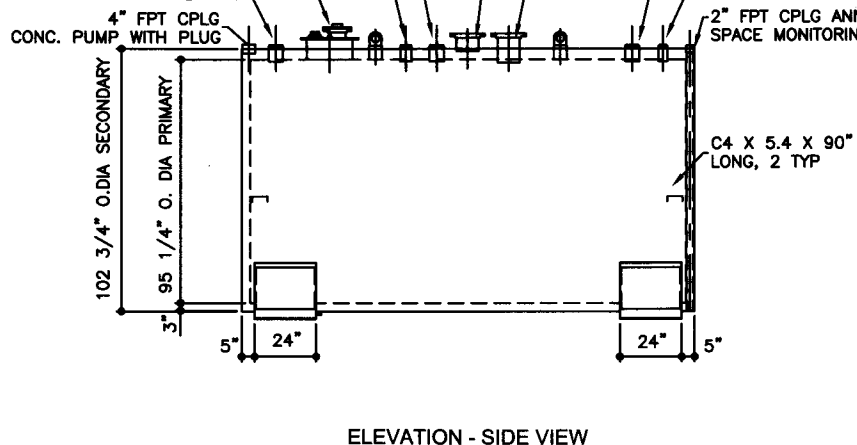


TOP VIEW

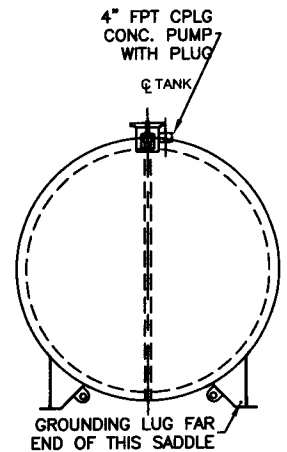
- 4" FPT ACFGPIPE5X6 AUXILIARY STAGE II, VAPOR RECOVERY
- 3" FPT ACFGPIPE4X9 VENT PRIMARY STAGE I, VAPOR RECOVERY
- 18" ID PRODUCT FILL MANHOLE W/
3" FPT FILL OPENING
3/4" FPT RETURN
4" FPT INSPECTION PORT
- 4" FPT ACFGPIPE5X6 PRODUCT DISPENSING
- 4" FPT CPLG CONC. PUMP WITH PLUG
- EMERGENCY VENT SECONDARY
8"150# RF SLIP-ON FLANGE
SCH 40 X 7" LONG PIPE ACFGVENT8-S
- EMERGENCY VENT PRIMARY
8"150# RF SLIP-ON FLANGE
SCH 40 X 11" LONG PIPE ACFGVENT9-L
- 4" FPT ACFGPIPE5X6 PRODUCT GAUGING
- 2" FPT ACFGPIPE3X9 STICK / SAMPLE
- 2" FPT CPLG ANNULAR SPACE MONITORING



ELEVATION - END VIEW



ELEVATION - SIDE VIEW



ELEVATION - END VIEW

TOLERANCES
TANK

CAPACITY	-0% / +10
OVERALL LENGTH	-0" / +2"
OVERALL WIDTH	-0" / +1"
OVERALL HEIGHT	-1/2" / +1/2"
OTHER DIMENSIONS	-1/4" / +1/4"

UL 142 (BUILT & LABELED)
UL 2085 (BUILT & LABELED)
STI-F941 (BUILT & LABELED)
HOLDDOWNS ARE SEISMIC RATED
DOUBLE WALL WITH 3" INSULATION
CYLINDRICAL FIREGUARD WITH SUPPORTS

STEEL: ASTM A36

PRIMARY TANK
SHELL: 2 GAUGE (1/4")
HEAD: 2 GAUGE (1/4")

SECONDARY TANK
SHELL: 2 GAUGE (1/4")
HEAD: 0 GAUGE (5/16")

COATING:

EXTERIOR ACE 3A COATING:
SP-6 GRIT BLAST
3A COLOR: #WH01 (WHITE)
1 CT TN-161 EPOXY 3.0-5.0 MILS
1 CT TN-74 URETHANE 2.0-3.0 MILS
TDFT 5.0-8.0 MILS

INTERIOR:
BARE STEEL

SPECIAL INSTRUCTIONS

FILL ANNULAR SPACE WITH PORTLAND CEMENT / PERLITE, CEMENT GRADE MIX.
LEAVE 1" AIR GAP BETWEEN PERLITE & SECONDARY TANK
INTERSTITIAL SPACE: 143 CUBIC FT.

APPROXIMATE SHIPPING WEIGHT

17,325 LBS.
12,750 LBS. (WITHOUT CEMENT)
TANK VENT CAPACITY
288,000 PRIMARY
312,000 SECONDARY

DRW BY	-
REV No	1
SHEET	2
OF	-

FIREGUARD - 5,000 GALLON

ACE PART No. AC05000U2G1 QTY: 1

(F:111)ACSHOP\FIREGARDIU2G1-3\050002-ORTHO.GCD-148

JOB ID No. ACE HOUSE PAPER No. ENG. FILE No.

01-01-02 SUPERCEDES 10-01-01

