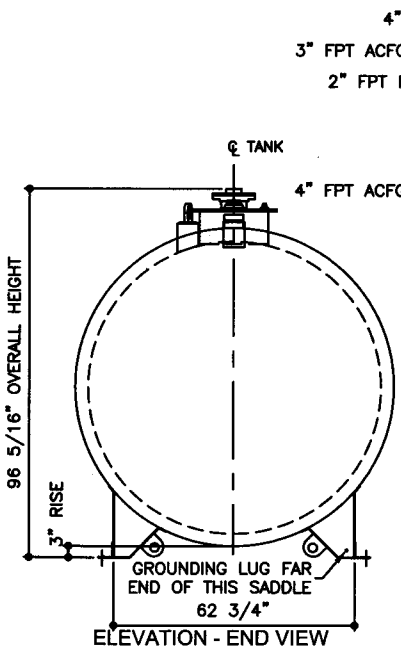
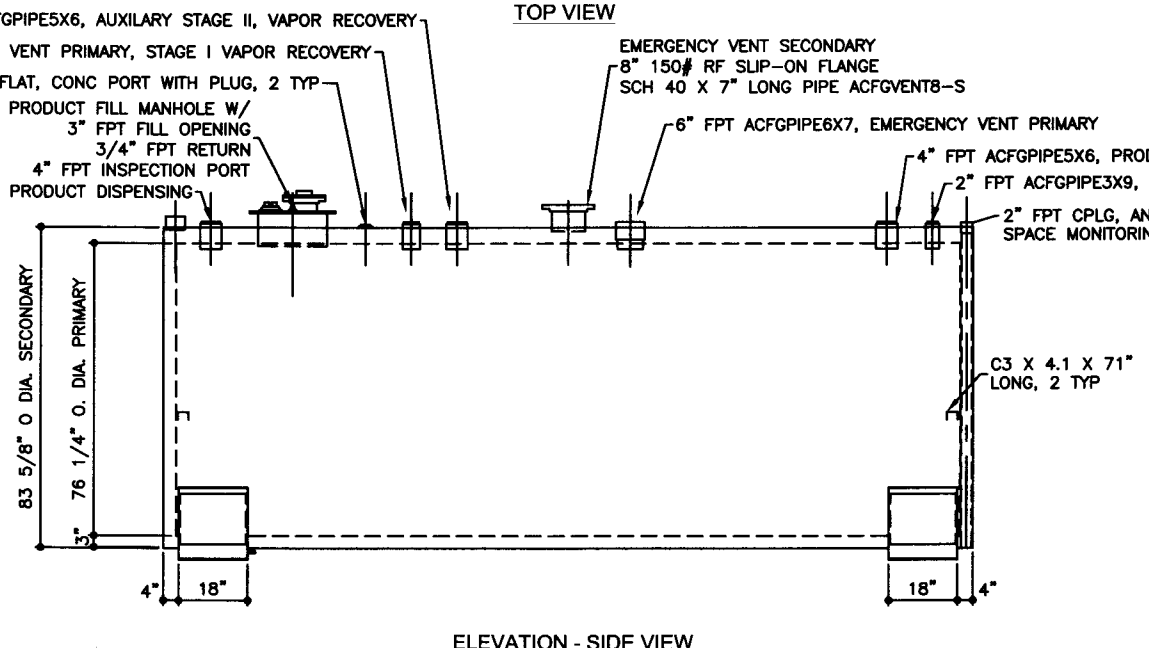


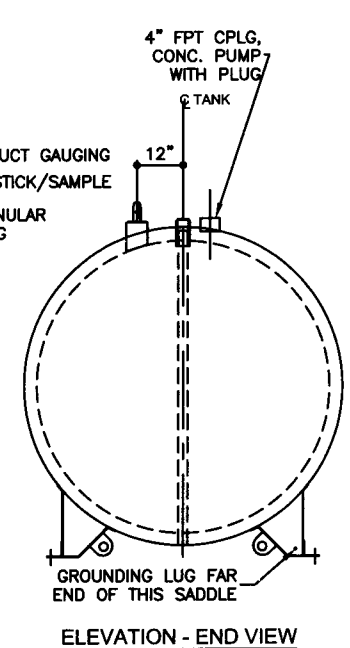
TOP VIEW



ELEVATION - END VIEW



ELEVATION - SIDE VIEW



ELEVATION - END VIEW

TOLERANCES	
TANK	
CAPACITY	-0% / +10
OVERALL LENGTH	-0" / +2"
OVERALL WIDTH	-0" / +1"
OVERALL HEIGHT	-1/2" / +1/2"
OTHER DIMENSIONS	-1/4" / +1/4"

UL 2085 (BUILT & LABELED)
 UL 142 (BUILT & LABELED)
 STI-F941 (BUILT & LABELED)
 HOLDDOWNS ARE SEISMIC RATED
 DOUBLE WALL WITH 3" INSULATION
 CYLINDRICAL FIREGUARD WITH SUPPORTS

STEEL: ASTM A36
 PRIMARY TANK
 SHELL: 6 GAUGE (3/16")
 HEAD: 6 GAUGE (3/16")

COATING:
 EXTERIOR ACE 3A COATING:
 SP-6 GRIT BLAST
 3A COLOR: #WH01 (WHITE)
 1 CT TN-161 EPOXY 3.0-5.0 MILS
 1 CT TN-74 URETHANE 2.0-3.0 MILS
 TDFT 5.0-8.0 MILS

SPECIAL INSTRUCTIONS
 FILL ANNULAR SPACE WITH
 PORTLAND CEMENT / PERLITE,
 CEMENT GRADE MIX.
 LEAVE 1" AIR GAP BETWEEN
 PERLITE & SECONDARY TANK
 INTERSTITIAL SPACE: 129 CUBIC FEET

APPROXIMATE SHIPPING WEIGHT
 13,925 LBS.
 8,250 LBS. (WITHOUT CEMENT)
 TANK VENT CAPACITY
 265,000 PRIMARY
 288,000 SECONDARY

JOB ID No. -
 ACE HOUSE PAPER No. -
 ENG. FILE No. -



FIREGUARD - 4,000 GALLON

ACE PART No. AC04000U2G1 QTY: 1

(F:1111ACSHOPIFIREGUARDU2G1-3104000U2-ORTHO.GCD-1.32)

SECONDARY TANK
 SHELL: 6 GAUGE (3/16")
 HEAD: 0 GAUGE (5/16")

INTERIOR:
 BARE STEEL

APPROXIMATE SHIPPING WEIGHT
 13,925 LBS.
 8,250 LBS. (WITHOUT CEMENT)
 TANK VENT CAPACITY
 265,000 PRIMARY
 288,000 SECONDARY

APPROXIMATE SHIPPING WEIGHT
 13,925 LBS.
 8,250 LBS. (WITHOUT CEMENT)
 TANK VENT CAPACITY
 265,000 PRIMARY
 288,000 SECONDARY

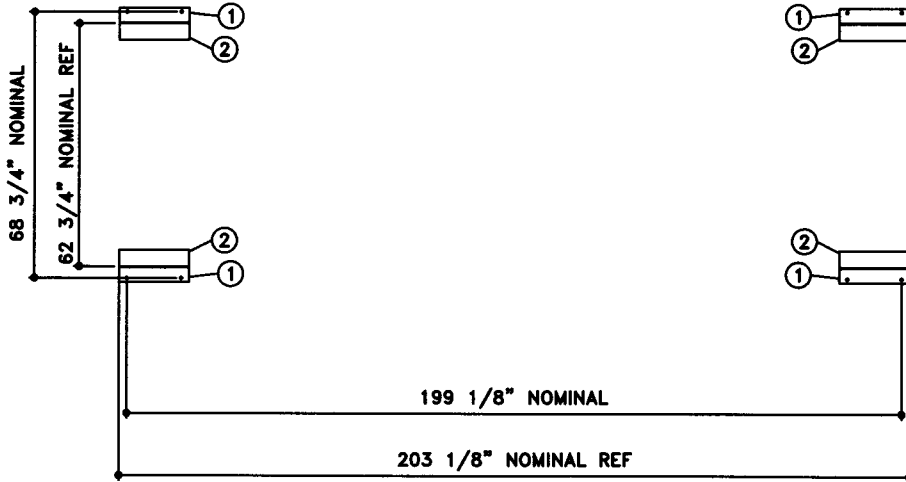
DRW BY -
 REV No. 1
 SHEET 2
 OF

01-01-02 SUPERCEDES 10-01-01

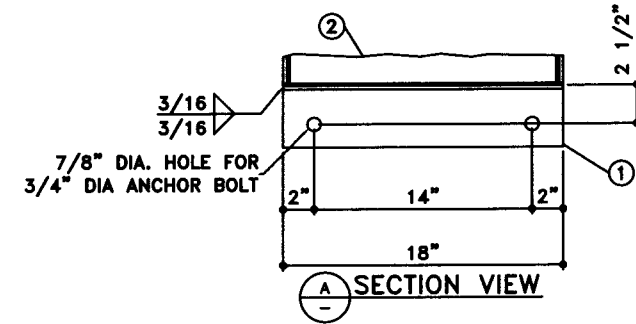
BILL OF MATERIAL

ITEM	QTY	NAME	DESCRIPTION	MATL	PART No.	NOTES
1	4	HOLD DOWN	L4 X 4 X 1/4 X 18" LONG	A36	-	-
2	-	SADDLE	-	-	-	SEE DETAIL SHT

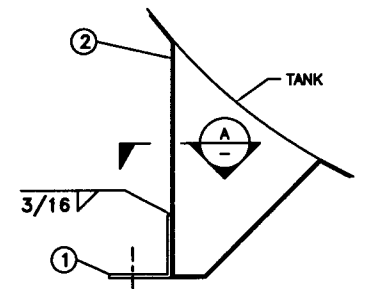
NOTE:
1. ALL NOMINAL DIMENSIONS ARE 2"±



HOLDDOWN - TOP VIEW



SECTION VIEW



ELEVATION - END VIEW
SEISMIC HOLD DOWN



HOLDDOWN - TOP VIEW
P.O. Box 9039
Seattle, WA 98109-0039

JOB ID No.	TOLERANCES
-	SEISMIC HOLD DOWN
ACE HOUSE PAPER No.	OVERALL LENGTH -1/16" / +1/16"
-	OVERALL WIDTH -1/16" / +1/16"
ENGG. FILE No.	OVERALL HEIGHT -1/16" / +1/16"
-	OTHER DIMENSIONS -1/16" / +1/16"

QUANTITY	PART NAME
1	SEISMIC HOLD DOWN - DETAIL
	ACE PART No. AC04000U2G1
	(1:08)

No.	DRAWING / REVISION	DRAWN BY	CHECKED BY	SHEET
1	1ST SUBMITTAL	-	-	OF
-	-	-	-	-
-	-	-	-	-
-	-	-	-	-
01-01-01 SUPERCEDES				