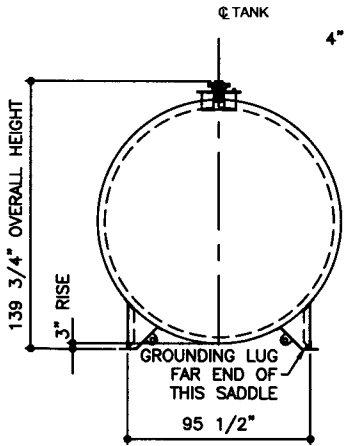


TOP VIEW

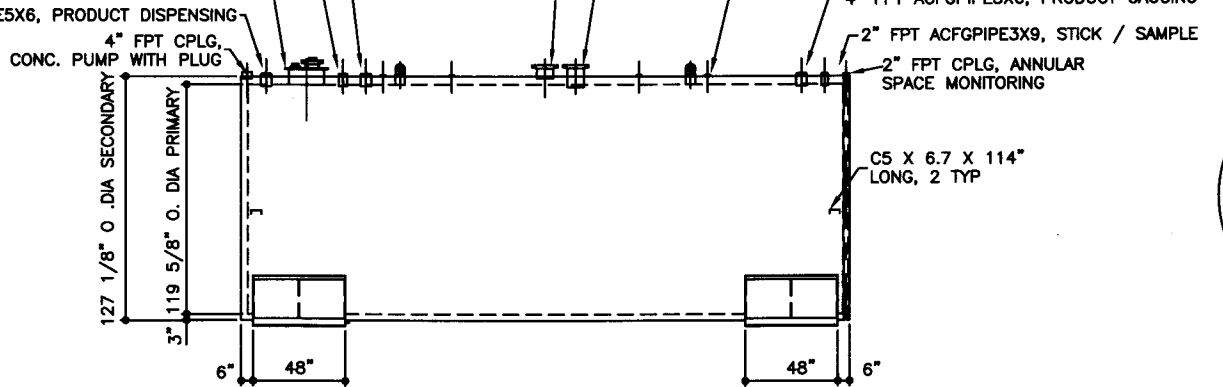
- 4" FPT ACFGPIPE5X6, AUXILIARY, STAGE II, VAPOR RECOVERY
- 3" FPT ACFGPIPE4X9, VENT PRIMARY, STAGE I, VAPOR RECOVERY
- 18" ID PRODUCT FILL MANHOLE W/
3" FPT FILL OPENING
3/4" FPT RETURN
4" FPT INSPECTION PORT

EMERGENCY VENT SECONDARY
8" 150# RF SLIP-ON FLANGE
SCH 40 X 7" LONG PIPE ACFGVENTB-S

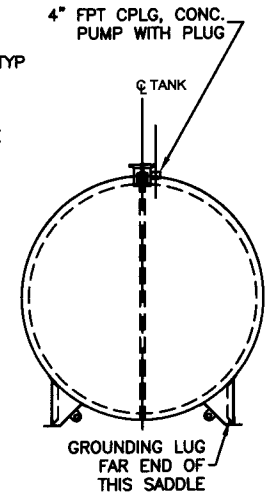
EMERGENCY VENT PRIMARY
8" 150# RF SLIP-ON FLANGE
SCH 40 X 11" LONG PIPE ACFGVENTB-L



ELEVATION - END VIEW



ELEVATION - SIDE VIEW



ELEVATION - END VIEW

TOLERANCES	
TANK	
CAPACITY	-0% / +10
OVERALL LENGTH	-0' / +2'
OVERALL WIDTH	-0' / +1'
OVERALL HEIGHT	-1/2" / +1/2"
OTHER DIMENSIONS	-1/4" / +1/4"

UL 2085 (BUILT & LABELED)
UL 142 (BUILT & LABELED)
ST1-F941 (BUILT & LABELED)
HOLDDOWNS ARE SEISMIC RATED
DOUBLE WALL WITH 3" INSULATION
CYLINDRICAL FIREGUARD WITH SUPPORTS

STEEL: ASTM A36
PRIMARY TANK
SHELL: 2 GAUGE (1/4")
HEAD: 2 GAUGE (1/4")

COATING:
EXTERIOR ACE 3A COATING:
SP-6 GRIT BLAST
3A COLOR: #WH01 (WHITE)
1 CT TN-161 EPOXY 3.0-5.0 MILS
1 CT TN-74 URETHANE 2.0-3.0 MILS
TDFT 5.0-8.0 MILS

SPECIAL INSTRUCTIONS
FILL ANNULAR SPACE WITH
PORTLAND CEMENT / PERLITE,
CEMENT GRADE MIX.
LEAVE 1" AIR GAP BETWEEN
PERLITE & SECONDARY TANK
INTERSTITIAL SPACE: 307 CUBIC FEET

APPROXIMATE SHIPPING WEIGHT
36,175 LBS.
26,350 LBS. (WITHOUT CEMENT)
TANK VENT CAPACITY
462,000 PRIMARY
462,000 SECONDARY

DRW BY	-
REV No	1
SHEET	2
OF	2



FIREGUARD - 15,000 GALLON

ACE PART No. AC15000U2G1 QTY: 1

(F:111ACSHOPIFIREGARDIU2G1-311500012-ORTHO.GCD-1.64)

SECONDARY TANK
SHELL: 2 GAUGE (1/4")
HEAD: 0 GAUGE (5/16")

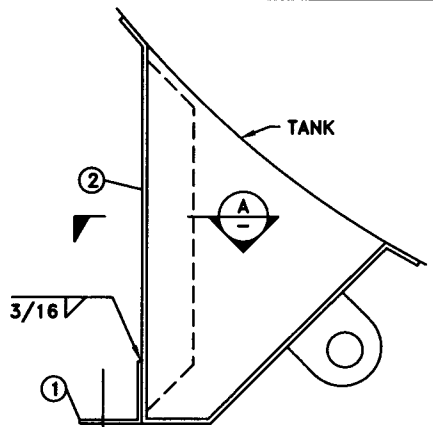
INTERIOR:
BARE STEEL

JOB ID No. - ACE HOUSE PAPER No. - ENG. FILE No. -
01-01-02 SUPERCEDES 10-01-01

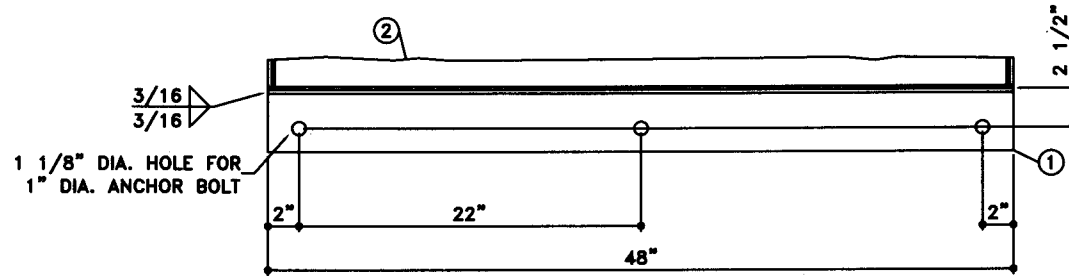
BILL OF MATERIAL

ITEM	QTY	NAME	DESCRIPTION	MATL	PART No.	NOTES
1	4	HOLD DOWN	L4 X 4 X 1/4 X 48" LONG	A36	-	-
2	-	SADDLE	-	-	-	SEE DETAIL SHT

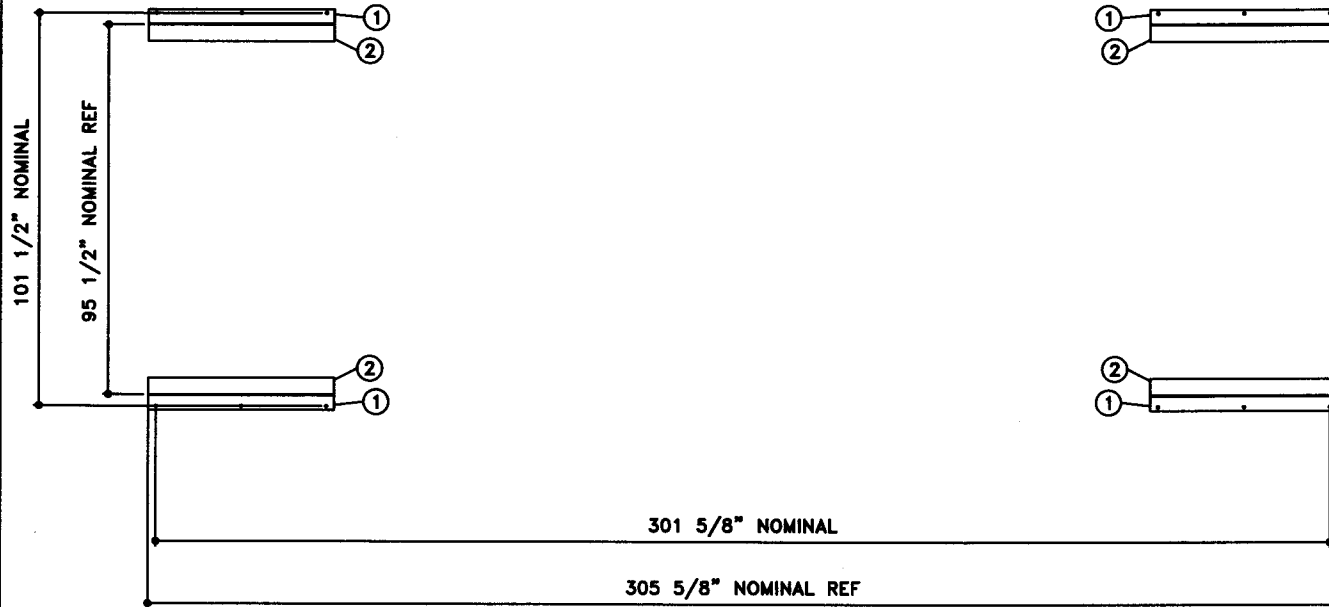
NOTE:
1. ALL NOMINAL DIMENSIONS ARE 3"±



ELEVATION - END VIEW
SEISMIC HOLD DOWN



A SECTION VIEW



HOLDDOWN - TOP VIEW

P.O. Box 9039
Seattle, WA 98109-0039

JOB ID No.	TOLERANCES	QUANTITY	PART NAME
-	SEISMIC HOLD DOWN	1	SEISMIC HOLD DOWN - DETAIL
ACE HOUSE PAPER No.	OVERALL LENGTH -1/16" / +1/16"		
-	OVERALL WIDTH -1/16" / +1/16"		
ENGG. FILE No.	OVERALL HEIGHT -1/16" / +1/16"		
-	OTHER DIMENSIONS -1/16" / +1/16"		

ACE PART No.	QUANTITY	PART NAME
AC15000U2G1	1	SEISMIC HOLD DOWN - DETAIL
(1:08)		

No.	DRAWING / REVISION	DRAWN BY	CHECKED BY	SHEET
1	1ST SUBMITTAL	-	-	OF
-	-	-	-	
-	-	-	-	
-	-	-	-	

01-01-01 SUPERCEDES