

TOP VIEW

2" FPT PHOENIX FLAT, CONC PORT WITH PLUG, 4 TYP

4" FPT ACFGPIPE5X6, AUXILIARY \ STAGE 2 VAPOR RECOVERY
 3" FPT ACFGPIPE4X9, VENT PRIMARY STAGE I VAPOR RECOVERY
 18" ID PRODUCT FILL MANHOLE W/
 3" FPT FILL OPENING
 3/4" FPT RETURN
 4" FPT INSPECTION PORT

EMERGENCY VENT SECONDARY
 8" 150# RF SLIP-ON FLANGE
 SCH 40 X 7" LONG PIPE ACFGVENT8-S

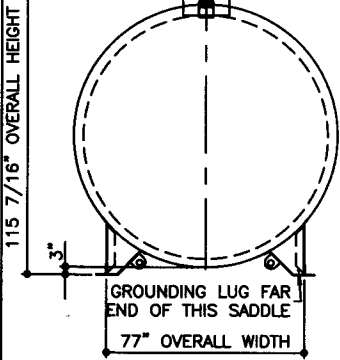
EMERGENCY VENT PRIMARY
 8" 150# RF SLIP-ON FLANGE
 SCH 40 X 11" LONG PIPE
 ACFGVENT8-L

4" FPT ACFGPIPE5X6,
 PRODUCT GAUGING
 2" FPT ACFGPIPE3X9, STICK/
 SAMPLE PORT

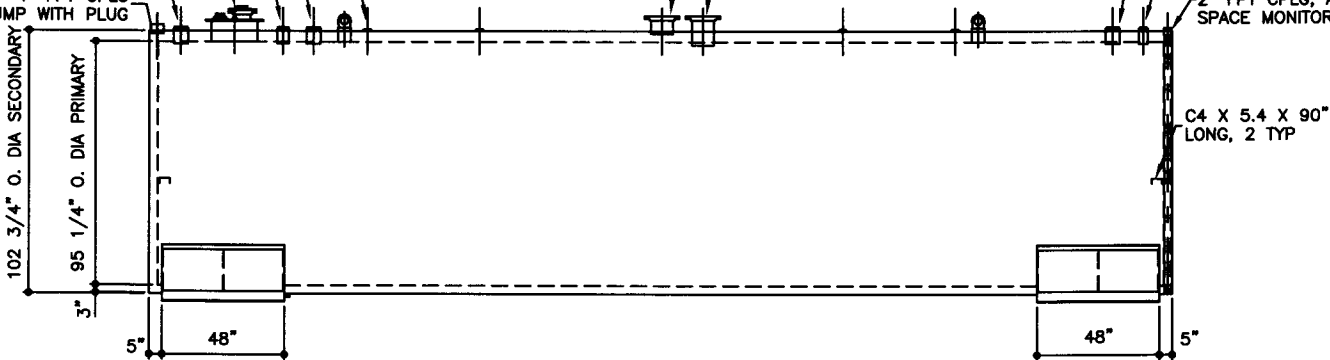
4" FPT CPLG, CONC.
 PUMP WITH PLUG

4" FPT ACFGPIPE5X6 PRODUCT
 DISPENSING / PUMP
 4" FPT CPLG
 CONC. PUMP WITH PLUG

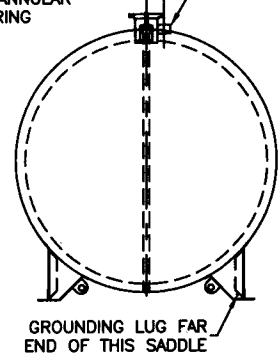
2" FPT CPLG, ANNULAR
 SPACE MONITORING



ELEVATION - END VIEW



ELEVATION - SIDE VIEW



ELEVATION - END VIEW

TOLERANCES	
TANK	
CAPACITY	-0% / +10
OVERALL LENGTH	-0" / +2"
OVERALL WIDTH	-0" / +1"
OVERALL HEIGHT	-1/2" / +1/2"
OTHER DIMENSIONS	-1/4" / +1/4"

UL 142 (BUILT & LABELED)
 UL 2085 (BUILT & LABELED)
 ST1-F941 (BUILT & LABELED)
 HOLDDOWNS ARE SEISMIC RATED
 DOUBLE WALL WITH 3" INSULATION
 CYLINDRICAL FIREGUARD WITH SUPPORTS

STEEL: ASTM A36
 PRIMARY TANK
 SHELL: 2 GAUGE (1/4")
 HEAD: 2 GAUGE (1/4")

COATING:
 EXTERIOR ACE 3A COATING:
 SP-6 GRIT BLAST
 3A COLOR: #WH01 (WHITE)
 1 CT TN-161 EPOXY: 3.0 -5.0 MILS
 1 CT TN-74 URETHANE: 2.0 -3.0 MILS
 TDF: 5.0 -8.0 MILS

SPECIAL INSTRUCTIONS
 FILL ANNULAR SPACE WITH
 PORTLAND CEMENT / PERLITE,
 CEMENT GRADE MIX.
 LEAVE 1" AIR GAP BETWEEN
 PERLITE & SECONDARY TANK
 INTERSTITIAL SPACE: 294 CUBIC FEET

APPROXIMATE SHIPPING WEIGHT
 34,050 LBS.
 24,625 LBS. (WITHOUT CEMENT)
 TANK VENT CAPACITY
 428,000 PRIMARY
 462,000 SECONDARY

DRW BY
 REV No
 SHEET



FIREGUARD - 12,000 GALLON
 ACE PART No. AC12000U2G1 QTY: 1
 (F:111)ACSHOPIFIREGARDIU2G1-3112000U2-ORTHO.GCD-1.48)

SECONDARY TANK
 SHELL: 2 GAUGE (1/4")
 HEAD: 0 GAUGE (5/16")

INTERIOR:
 BARE STEEL

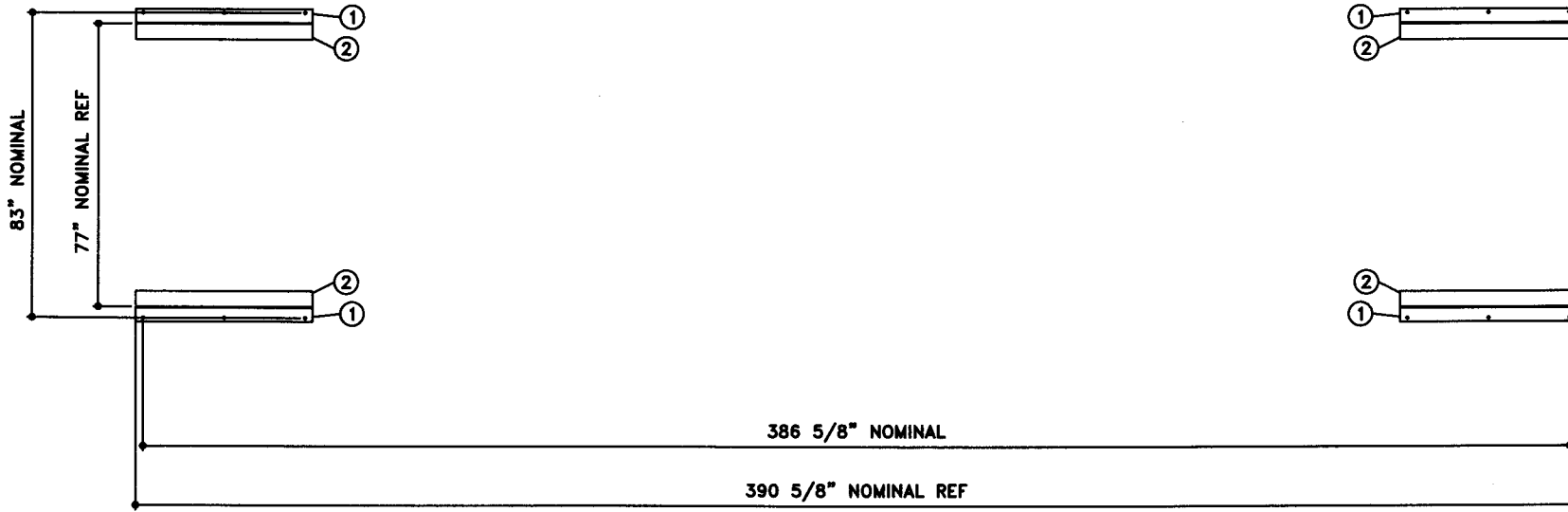
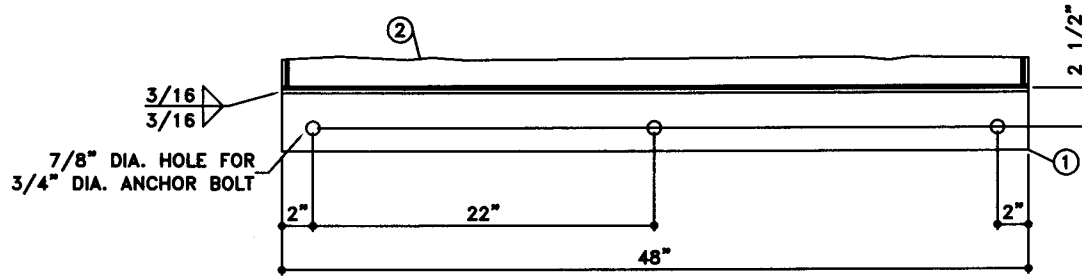
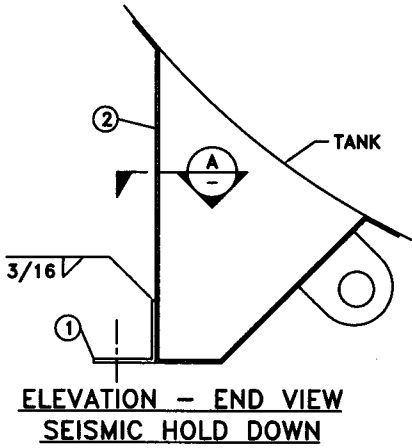
JOB ID No. ACE HOUSE PAPER No. ENG. FILE No.
 01-01-02 SUPERCEDES 10-01-01

SHEET 2 OF

BILL OF MATERIAL

ITEM	QTY	NAME	DESCRIPTION	MATL	PART No.	NOTES
1	4	HOLD DOWN	L4 X 4 X 1/4 X 48" LONG	A36	-	-
2	-	SADDLE	-	-	-	SEE DETAIL SHT

NOTE:
1. ALL NOMINAL DIMENSIONS ARE 3"±



P.O. Box 9039
Seattle, WA 98109-0039

JOB ID No.	TOLERANCES
-	SEISMIC HOLD DOWN
ACE HOUSE PAPER No.	OVERALL LENGTH -1/16" / +1/16"
ENG. FILE No.	OVERALL WIDTH -1/16" / +1/16"
-	OVERALL HEIGHT -1/16" / +1/16"
-	OTHER DIMENSIONS -1/16" / +1/16"

QUANTITY	PART NAME
1	SEISMIC HOLD DOWN - DETAIL
(1:08)	ACE PART No. AC12000U2G1

No.	DRAWING / REVISION	DRAWN BY	CHECKED BY	SHEET
1	1ST SUBMITTAL	-	-	OF
-	-	-	-	-
-	-	-	-	-
-	-	-	-	-
01-01-01 SUPERCEDES				