

ELEVATION - END VIEW

ELEVATION - SIDE VIEW

ELEVATION - END VIEW

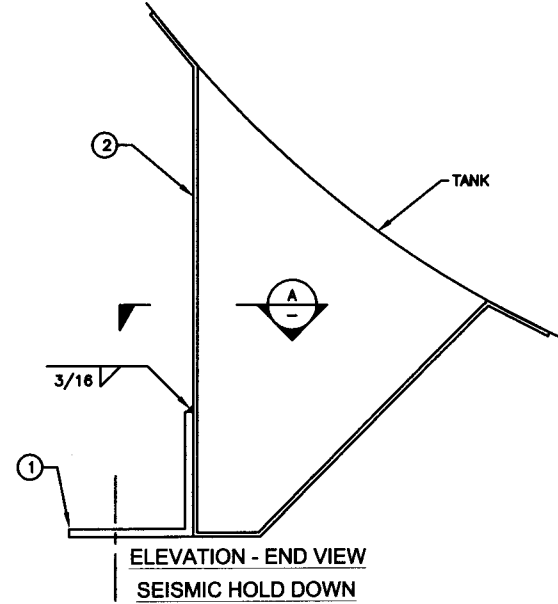
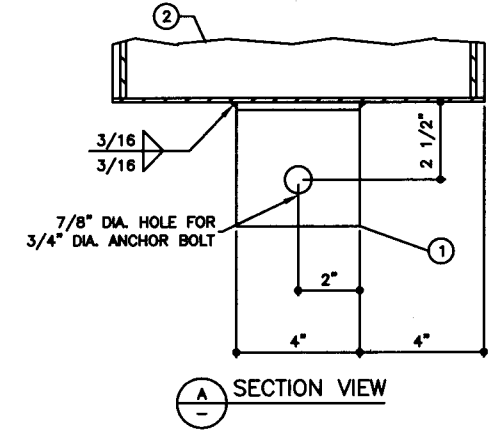
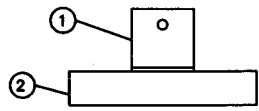
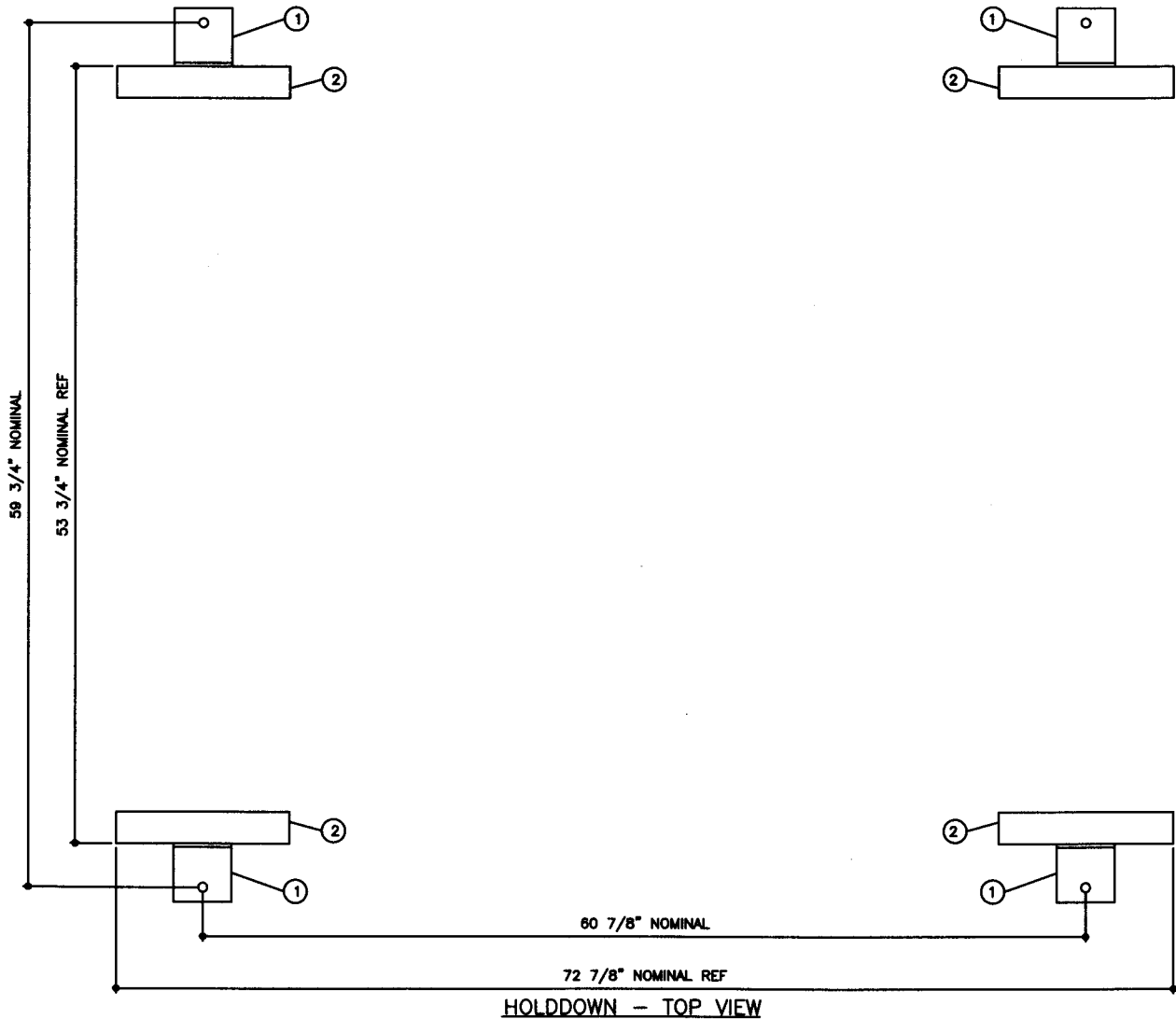
TOLERANCES		UL 2085 & UL 142 (BUILT & LABELED) STI-F941 (BUILT & LABELED) HOLDDOWNS ARE SEISMIC RATED DOUBLE WALL WITH 3" INSULATION CYLINDRICAL FIREGUARD WITH SUPPORTS	STEEL: ASTM A36 PRIMARY TANK SHELL: 10 GAUGE (9/64") HEAD: 10 GAUGE (9/64")	COATING: EXTERIOR ACE 3A COATING: SP-6 GRIT BLAST 3A COLOR: #WH01 (WHITE) 1 CT TN-161 EPOXY 3.0-5.0 MILS 1 CT TN-74 URETHANE 2.0-3.0 MILS TDFT 5.0-8.0 MILS	SPECIAL INSTRUCTIONS FILL ANNULAR SPACE WITH PORTLAND CEMENT / PERLITE, CEMENT GRADE MIX. LEAVE 1" AIR GAP BETWEEN PERLITE & SECONDARY TANK INTERSTITIAL SPACE: 47 CUBIC FEET	APPROXIMATE SHIPPING WEIGHT 4,550 LBS. 3,050 LBS. (WITHOUT CEMENT)	DRW BY
TANK							REV No
CAPACITY	-0% / +10	FIREGUARD - 1,000 GALLON	SECONDARY TANK SHELL: 6 GAUGE (3/16") HEAD: 6 GAUGE (3/16")	INTERIOR: BARE STEEL	TANK VENT CAPACITY 126,000 PRIMARY 147,000 SECONDARY	SHEET	-
OVERALL LENGTH	-0" / +2"						1
OVERALL WIDTH	-0" / +1"						-
OVERALL HEIGHT	-1/2" / +1/2"						2
OTHER DIMENSIONS	-1/4" / +1/4"						OF
1-206-281-5000		ACE PART No. AC01000U2G1 QTY: 1	JOB ID No. -	ACE HOUSE PAPER No. -	ENG. FILE No. -	01-01-02 SUPERCEDES 10-01-01	



BILL OF MATERIAL

ITEM	QTY	NAME	DESCRIPTION	MATL	PART No.	NOTES
1	4	HOLD DOWN	L4 X 4 X 1/4 X 4" LONG	A36	-	-
2	-	SADDLE	-	-	-	SEE DETAIL SHT

NOTE:
1. ALL NOMINAL DIMENSIONS ARE 2"±



Acetank & EQUIPMENT
P.O. Box 9039
Seattle, WA 98109-0039

JOB ID No.	TOLERANCES
-	SEISMIC HOLD DOWN
ACE HOUSE PAPER No.	OVERALL LENGTH -1/16" / +1/16"
-	OVERALL WIDTH -1/16" / +1/16"
ENGG. FILE No.	OVERALL HEIGHT -1/16" / +1/16"
-	OTHER DIMENSIONS -1/16" / +1/16"

QUANTITY	PART NAME
1	SEISMIC HOLD DOWN - DETAIL
	ACE PART No. AC01000U2G1

No.	DRAWING / REVISION	DRAWN BY	CHECKED BY	SHEET
1	1ST SUBMITTAL	-	-	OF
-	-	-	-	-
-	-	-	-	-
-	-	-	-	-

(1:04)
01-01-01 SUPERCEDES