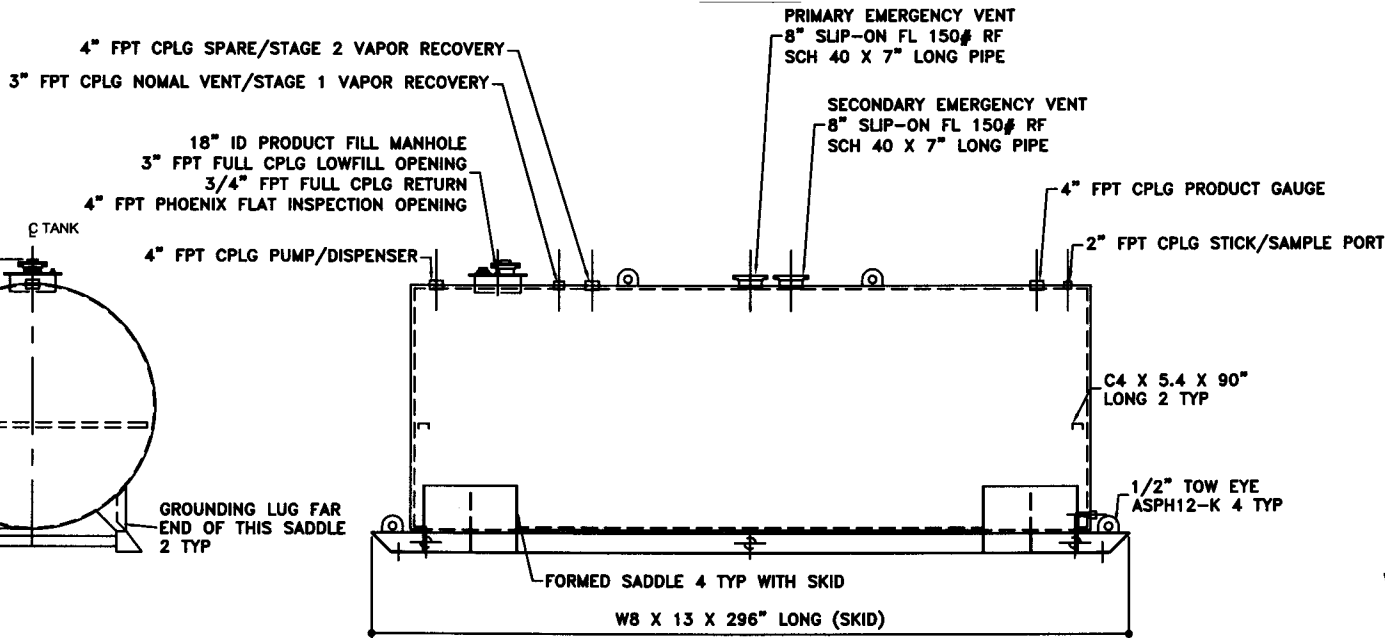
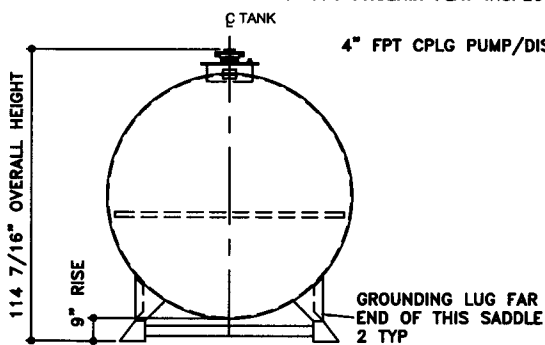


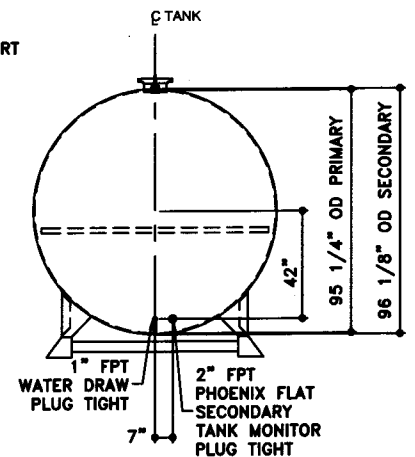
TOP VIEW



ELEVATION - SIDE VIEW



ELEVATION - END VIEW



ELEVATION - END VIEW

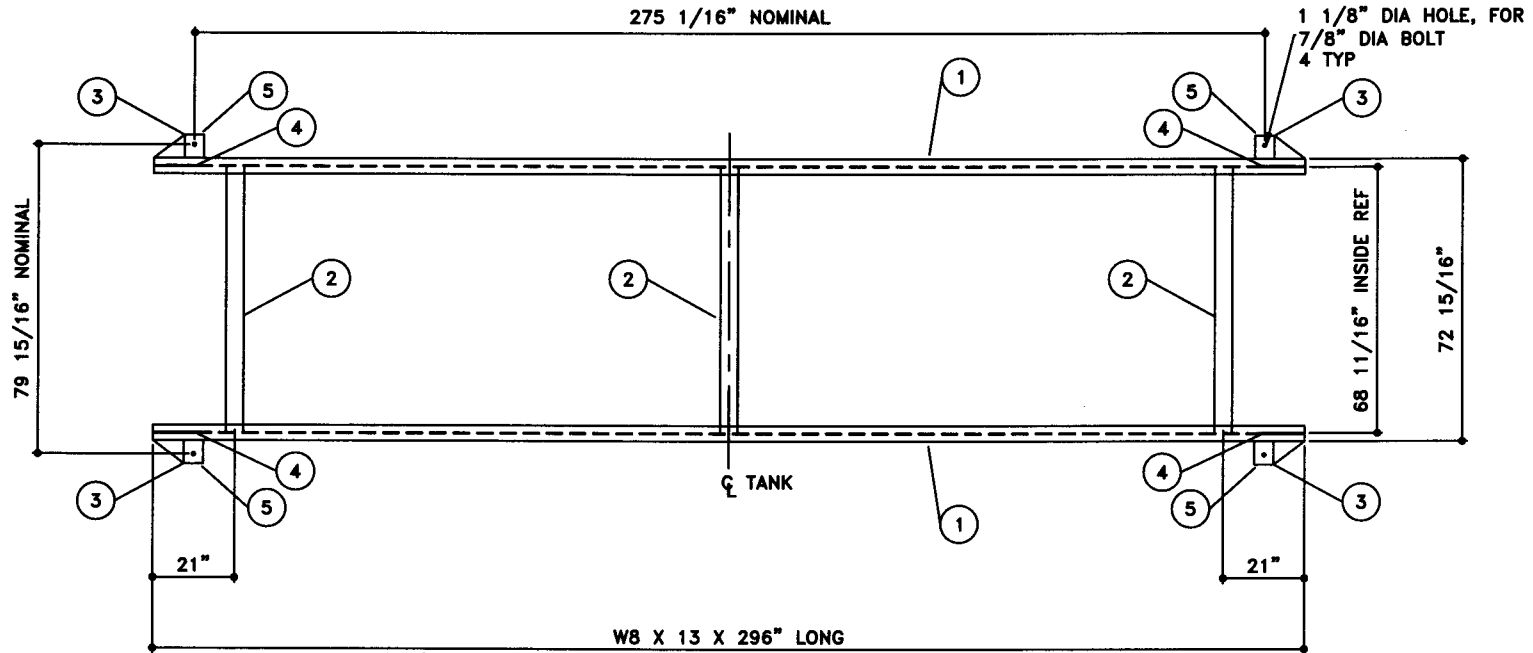
TOLERANCES TANK CAPACITY -0% / +10 OVERALL LENGTH -0" / +2" OVERALL WIDTH -0" / +1" OVERALL HEIGHT -1/2" / +1/2" OTHER DIMENSIONS -1/4" / +1/4" 1-206-281-5000		UL 142 (BUILT & LABELED) HOLDDOWNS ARE SEISMIC RATED DOUBLE WALL TANK SKID TANK		STEEL: ASTM A36 PRIMARY TANK SHELL: 2 GAUGE (1/4") HEAD: 2 GAUGE (1/4")		COATING: "R" EXTERIOR COATING, ACE 1A RED SHOP COAT 1-3 MILS "A" EXTERIOR ACE 3A COATING: SP-6 GRIT BLAST 3A COLOR: #WH01 (WHITE) 1 CT TN-161 EPOXY 3.0-5.0 MILS 1 CT TN-74 URETHANE 2.0-3.0 MILS TDFT 5.0-8.0 MILS		SPECIAL INSTRUCTIONS PLUG TIGHT WRENCH PLUG TIGHT WITH PIPE DOPE ON THREADS AND TESTED LEAK FREE.		APPROXIMATE SHIPPING WEIGHT 13,960 LBS. TANK VENT CAPACITY 354,000 PRIMARY TANK 354,000 SECONDARY TANK		DRW BY REV No SHEET OF
AceSkidLite II - 8,000 GALLON ACE PART No. AC08000U2K4 QTY: 1		SECONDARY TANK SHELL: 6 GAUGE (3/16") HEAD: 2 GAUGE (1/4")		INTERIOR: BARE STEEL		JOB ID No. ACE HOUSE PAPER No. ENG. FILE No.		01-01-02 SUPERCEDES 09-01-01		1 2 OF		



NOTE:
1. ALL NOMINAL DIMENSIONS ARE 2"±

BILL OF MATERIAL

ITEM	QTY	NAME	DESCRIPTION	MATL	PART No.	NOTES
1	2	SKID	W8 X 13 X 296" LONG	A36	-	MOUNT, COAT
2	3	SKID STIFFENER	4" SCH. 40 PIPE X 68 11/16" LONG	A36	-	MOUNT, COAT
3	-	END CAP	PLATE	-	-	SEE DTL SHT
4	-	TOW EYE	-	-	-	SEE DTL SHT
5	-	SEISMIC HOLD DOWN	PLATE	-	-	SEE DTL SHT



TOP VIEW



P.O. Box 9039
Seattle, WA 98109-0039

JOB ID No.	TOLERANCES
-	SKID
ACE HOUSE PAPER No.	OVERALL LENGTH -1/4" / +1/4"
-	OVERALL WIDTH -1/4" / +1/4"
ENGG. FILE No.	OVERALL HEIGHT -1/4" / +1/4"
-	OTHER DIMENSIONS -1/8" / +1/8"

QUANTITY	PART NAME	SKID DETAILS
1	SKID	-
	ACE PART No.	AC08000U2K4
	(1:32)	

No.	DRAWING / REVISION	DRAWN BY	CHECKED BY	SHEET
1	1ST SUBMITTAL	-	-	OF
-	-	-	-	
-	-	-	-	
-	-	-	-	

01-01-01 SUPERCEDES