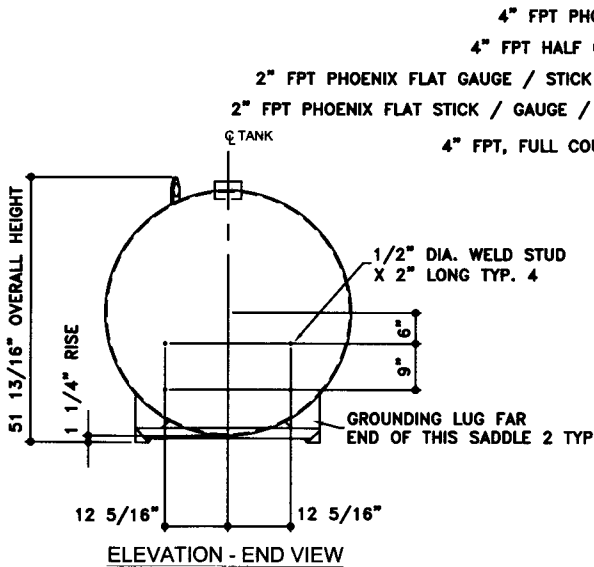
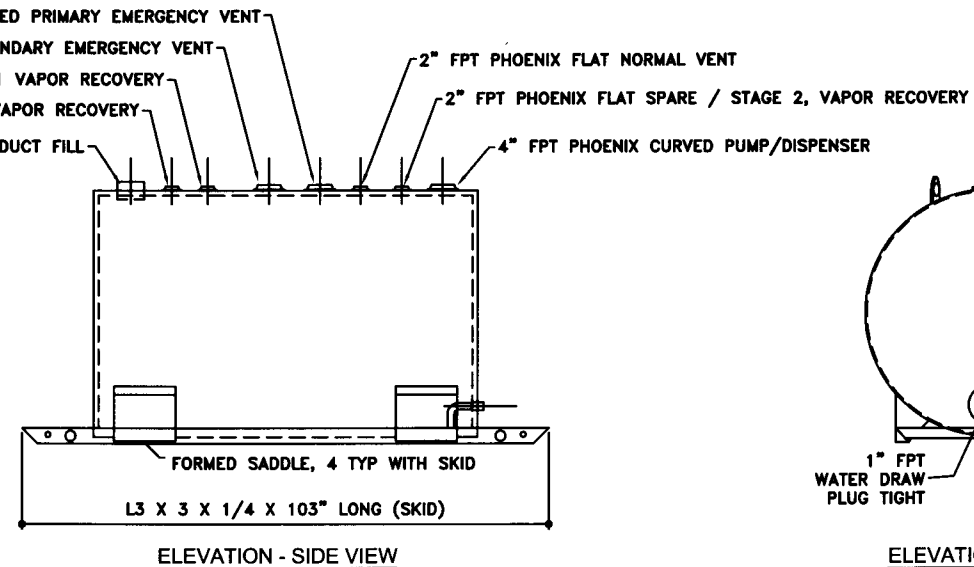


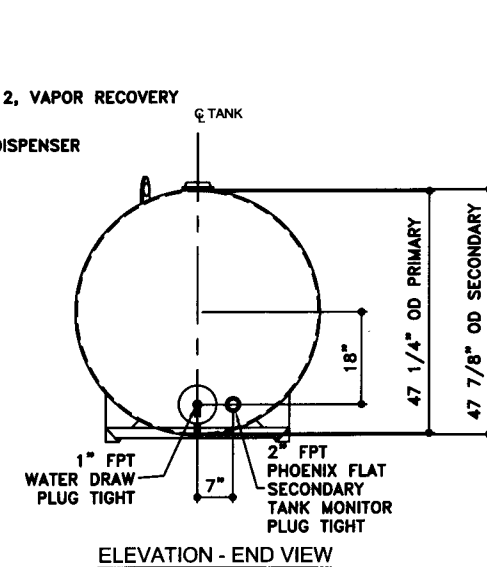
TOP VIEW



ELEVATION - END VIEW



ELEVATION - SIDE VIEW



ELEVATION - END VIEW

TOLERANCES	
TANK	
CAPACITY	-0% / +10
OVERALL LENGTH	-0" / +2"
OVERALL WIDTH	-0" / +1"
OVERALL HEIGHT	-1/2" / +1/2"
OTHER DIMENSIONS	-1/4" / +1/4"

UL 142 (BUILT & LABELED)
 HOLDDOWNS ARE SEISMIC RATED
 DOUBLE WALL TANK
 SKID TANK

STEEL: ASTM A36
 PRIMARY TANK
 SHELL: 12 GAUGE (7/64")
 HEAD: 12 GAUGE (7/64")

COATING:
 "R" EXTERIOR COATING, ACE 1A
 RED SHOP COAT 1-3 MILS
 "A" EXTERIOR ACE 3A COATING:
 SP-6 GRIT BLAST
 3A COLOR: #WH01 (WHITE)
 1 CT TN-161 EPOXY 3.0-5.0 MILS
 1 CT TN-74 URETHANE 2.0-3.0 MILS
 TDFT 5.0-8.0 MILS

SPECIAL INSTRUCTIONS
 PLUG TIGHT
 WRENCH PLUG TIGHT WITH PIPE DOPE
 ON THREADS AND TESTED LEAK FREE.

APPROXIMATE SHIPPING WEIGHT:
 1,200 LBS.
 TANK VENT CAPACITY
 84,200 PRIMARY TANK
 84,200 SECONDARY TANK

DRW BY -
 REV No 1
 SHEET 2
 OF



AceSkidlite II - 550 GALLON

ACE PART No. **AC00550U2K4** QTY: 1
 (F:111)ACSHOPISKIDU2K410055012-ORTHO.GCD-1:24)

SECONDARY TANK
 SHELL: 12 GAUGE (7/64")
 HEAD: 10 GAUGE (9/64")

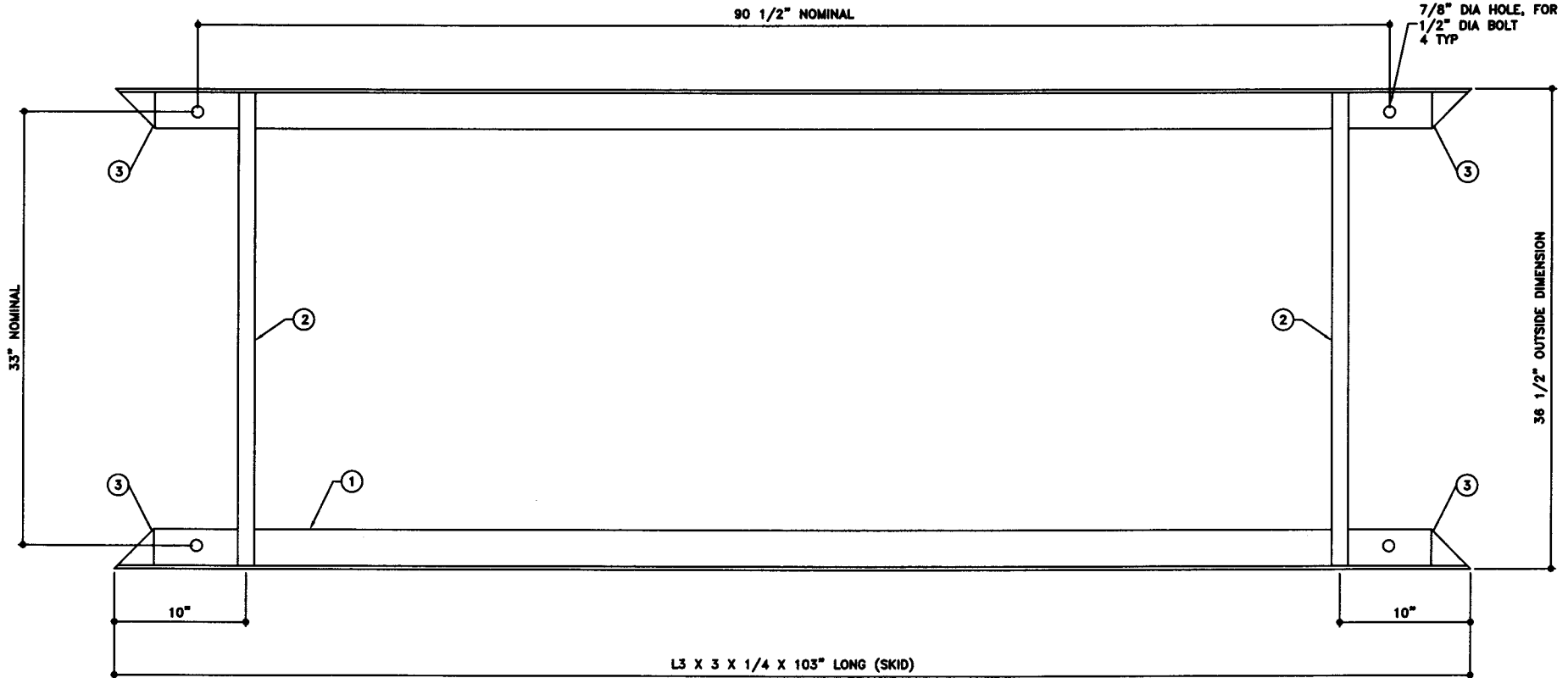
INTERIOR:
 BARE STEEL

JOB ID No. - ACE HOUSE PAPER No. - ENG. FILE No. -
 04-01-02 SUPERCEDES 9-1-01

BILL OF MATERIAL

ITEM	QTY	NAME	DESCRIPTION	MATL	PART No.	NOTES
1	2	SKID ANGLE	L3 X 3 X 1/4 X 103" LONG	A36	-	MOUNT, COAT
2	2	SKID STIFFENER	1 1/4" SCH 40 PIPE X 36" LONG	A36	-	MOUNT, COAT
3	-	SKID CAP	PLATE	A36	-	SEE DTL SHT

NOTE:
1. ALL NOMINAL DIMENSIONS ARE 2"±



TOP VIEW

JOB ID No.	TOLERANCES
-	SKID
ACE HOUSE PAPER No.	OVERALL LENGTH -1/4" / +1/4"
-	OVERALL WIDTH -1/4" / +1/4"
ENGG. FILE No.	OVERALL HEIGHT -1/4" / +1/4"
-	OTHER DIMENSIONS -1/8" / +1/8"

QUANTITY	PART NAME
1	SKID - LAYOUT
	ACE PART No. AC00550U2K4
	(1:08)

No.	DRAWING / REVISION	DRAWN BY	CHECKED BY	SHEET
1	1ST SUBMITTAL	-	-	OF
-	-	-	-	
-	-	-	-	
-	-	-	-	

01-01-01 SUPERCEDES