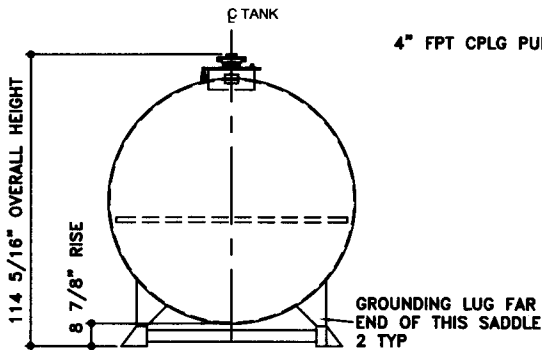
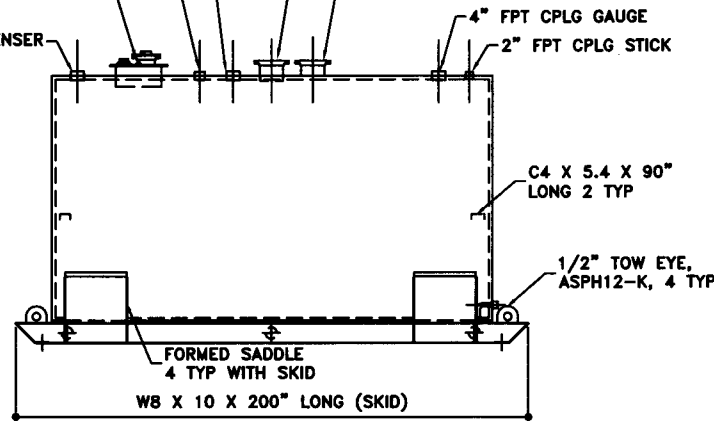


TOP VIEW

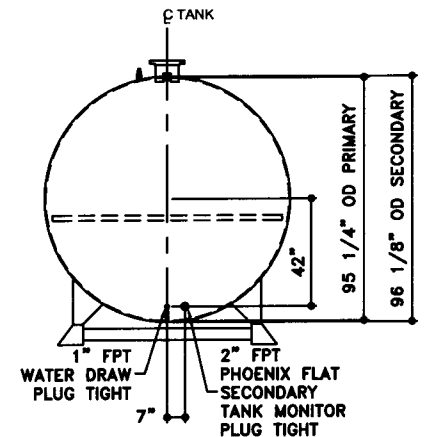
- 4" FPT CPLG SPARE/STAGE 2 VAPOR RECOVERY
- 3" FPT CPLG NORMAL VENT STAGE 1 VAPOR RECOVERY
- 18" ID PRODUCT FILL MANHOLE
- 3" FPT FULL CPLG LOWFILL OPENING
- 3/4" FPT FULL CPLG RETURN
- 4" FPT PHOENIX FLAT INSPECTION OPENING
- 4" FPT CPLG PUMP/DISPENSER
- 4" FPT CPLG GAUGE
- 2" FPT CPLG STICK
- PRIMARY EMERGENCY VENT
8" SLIP-ON FL 150# RF
SCH 40 X 7" LONG PIPE
- SECONDARY EMERGENCY VENT
8" SLIP-ON FL 150# RF
SCH 40 X 7" LONG PIPE



ELEVATION - END VIEW



ELEVATION - SIDE VIEW



ELEVATION - END VIEW

TOLERANCES	
TANK	
CAPACITY	-0% / +10
OVERALL LENGTH	-0" / +2"
OVERALL WIDTH	-0" / +1"
OVERALL HEIGHT	-1/2" / +1/2"
OTHER DIMENSIONS	-1/4" / +1/4"

UL 142 (BUILT & LABELED)
HOLDDOWNS ARE SEISMIC RATED
DOUBLE WALL TANK
SKID TANK

STEEL: ASTM A36
PRIMARY TANK
SHELL: 2 GAUGE (1/4")
HEAD: 2 GAUGE (1/4")

COATING:
"R" EXTERIOR COATING, ACE 1A
RED SHOP COAT 1-3 MILS

"A" EXTERIOR ACE 3A COATING:
SP-6 GRIT BLAST
3A COLOR: #WH01 (WHITE)
1 CT TN-161 EPOXY 3.0-5.0 MILS
1 CT TN-74 URETHANE 2.0-3.0 MILS
TDFT 5.0-8.0 MILS

SPECIAL INSTRUCTIONS
PLUG TIGHT
WRENCH PLUG TIGHT WITH PIPE DOPE
ON THREADS AND TESTED LEAK FREE.

APPROXIMATE SHIPPING WEIGHT
9,960 LBS.

TANK VENT CAPACITY
288,000 PRIMARY TANK

288,000 SECONDARY TANK



AceSkidLite II - 5,000 GALLON

ACE PART No. **AC05000U2K4** QTY: **1**

(F:111ACSHOPIISKIDU2K41050002-ORTHO.GCD-1:48)

SECONDARY TANK
SHELL: 6 GAUGE (3/16")
HEAD: 2 GAUGE (1/4")

INTERIOR:
BARE STEEL

JOB ID No. - ACE HOUSE PAPER No. - ENG. FILE No. -

01-01-02 SUPERCEDES 09-01-01

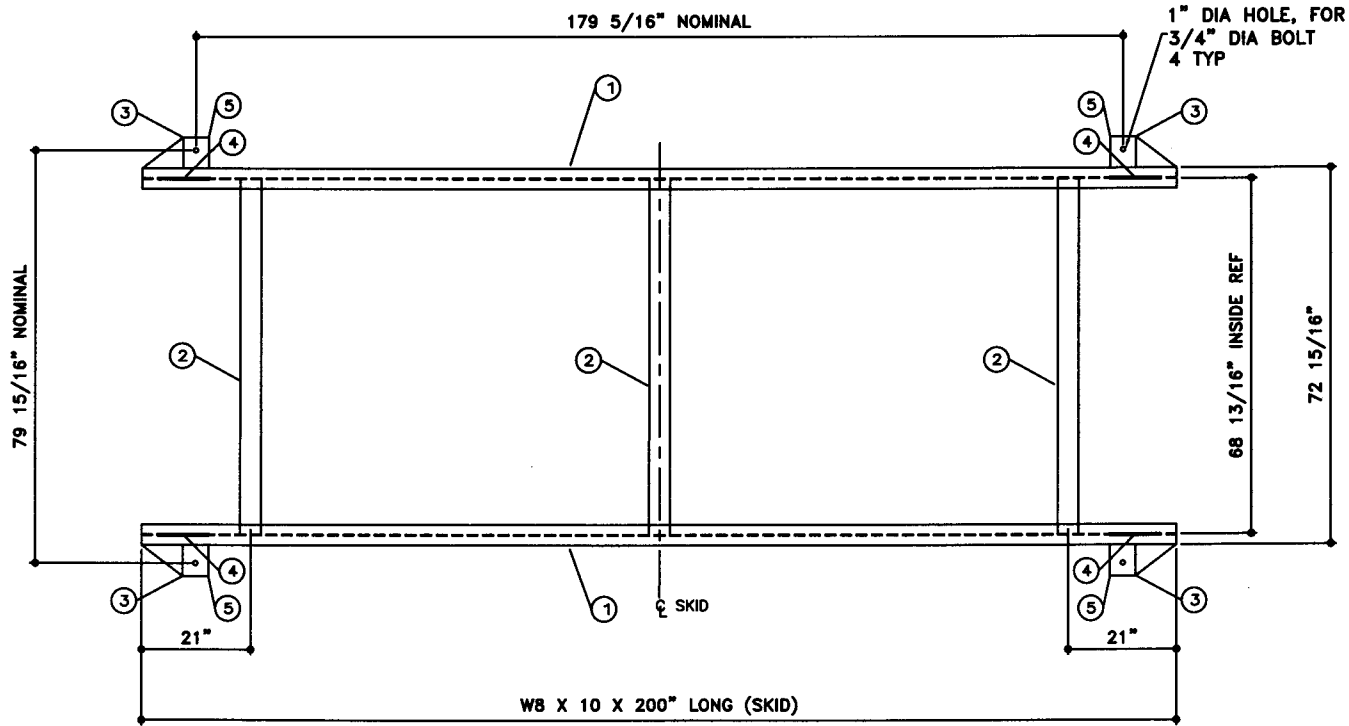
DRW BY -
REV No 1
SHEET 2
OF

BILL OF MATERIAL

ITEM	QTY	NAME	DESCRIPTION	MATL	PART No.	NOTES
1	2	SKID BEAM	W8 X 10 X 200" LONG	A36	-	MOUNT, COAT
2	3	SKID CROSS BRACE	4" SCH. 40 PIPE X 68 13/16" LONG	A36	-	MOUNT, COAT
3	-	END CAP	-	-	-	SEE DTL SHT
4	-	TOW EYE	-	-	-	SEE DTL SHT
5	-	SEISMIC HOLD DOWN	-	-	-	SEE DTL SHT

NOTE:

1. ALL NOMINAL DIMENSIONS ARE 2"±



TOP VIEW

JOB ID No.	TOLERANCES
-	SKID
ACE HOUSE PAPER No.	OVERALL LENGTH -1/4" / +1/4"
-	OVERALL WIDTH -1/4" / +1/4"
ENGG. FILE No.	OVERALL HEIGHT -1/4" / +1/4"
-	OTHER DIMENSIONS -1/8" / +1/8"

QUANTITY	PART NAME	SKID DETAILS
1	-	-
ACE PART No.	AC05000U2K4	
(1:24)		

No.	DRAWING / REVISION	OWNED BY	CHECKED BY	SHEET
1	1ST SUBMITTAL	-	-	OF
-	-	-	-	-
-	-	-	-	-
-	-	-	-	-
01-01-01 SUPERCEDES				