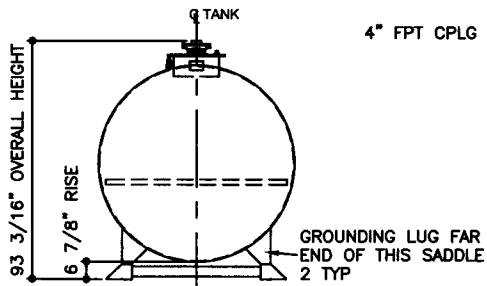
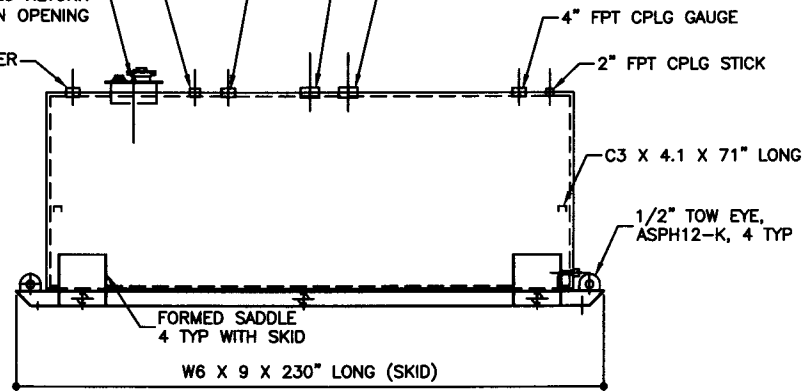


TOP VIEW

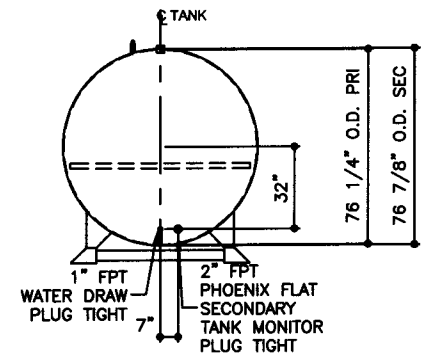
- 3" FPT CPLG NORMAL VENT/STAGE 1 VAPOR RECOVERY
- 4" FPT CPLG SPARE/STAGE 2 VAPOR RECOVERY
- 6" FPT CPLG PRIMARY EMERGENCY VENT
- 6" FPT CPLG SECONDARY EMERGENCY VENT
- 18" ID PRODUCT FILL MANHOLE
- 3" FPT FULL CPLG LOWFILL OPENING
- 3/4" FPT FULL CPLG RETURN
- 4" FPT PHOENIX FLAT INSPECTION OPENING
- 4" FPT CPLG PUMP/DISPENSER
- 4" FPT CPLG GAUGE
- 2" FPT CPLG STICK



ELEVATION - END VIEW



ELEVATION - SIDE VIEW



ELEVATION - END VIEW

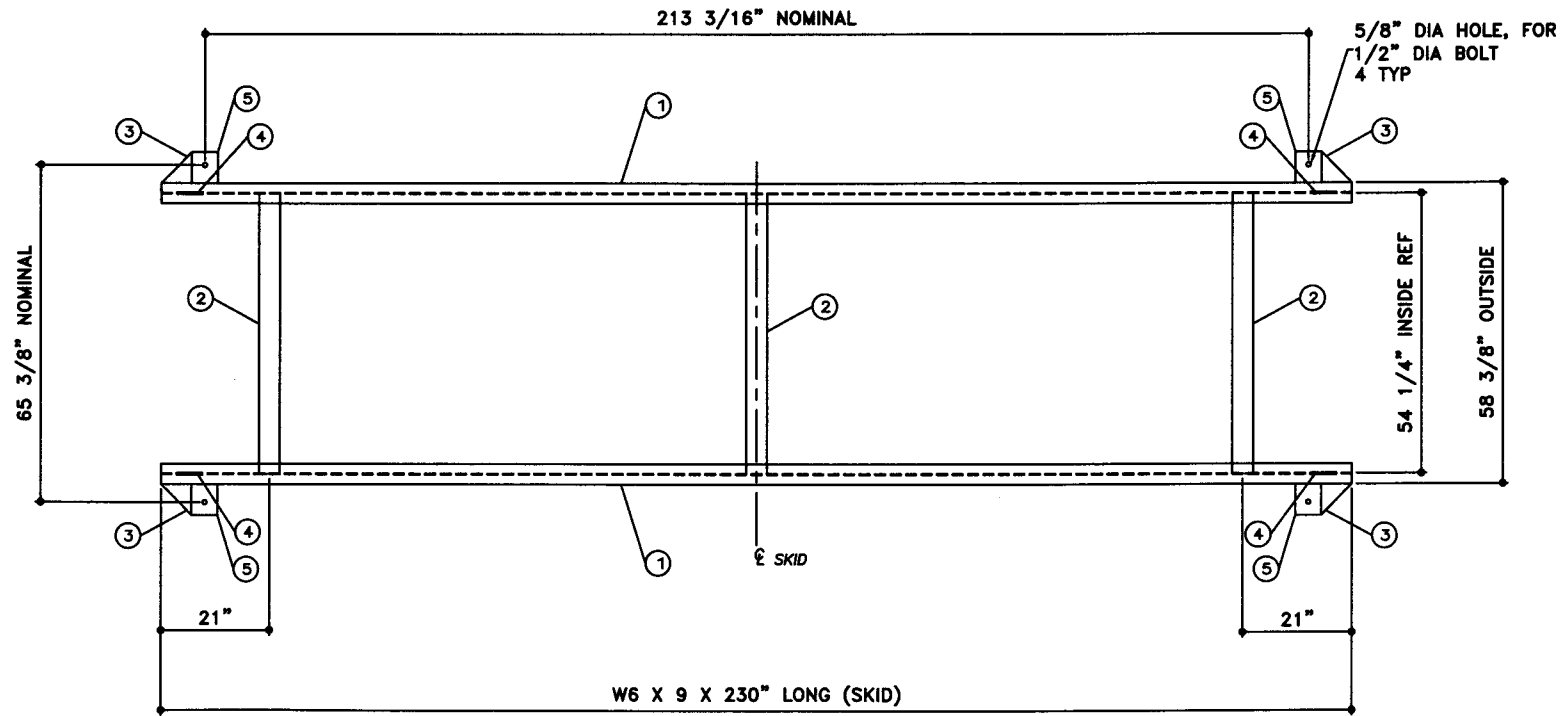
TOLERANCES TANK CAPACITY -0% / +10 OVERALL LENGTH -0" / +2" OVERALL WIDTH -0" / +1" OVERALL HEIGHT -1/2" / +1/2" OTHER DIMENSIONS -1/4" / +1/4"		UL 142 (BUILT & LABELED) HOLDDOWNS ARE SEISMIC RATED DOUBLE WALL TANK SKID TANK		STEEL: ASTM A36 PRIMARY TANK SHELL: 6 GAUGE (3/16") HEAD: 6 GAUGE (3/16")		COATING: "R" EXTERIOR COATING, ACE 1A RED SHOP COAT 1-3 MILS "A" EXTERIOR ACE 3A COATING: SP-6 GRIT BLAST 3A COLOR: #WH01 (WHITE) 1 CT TN-161 EPOXY 3.0-5.0 MILS 1 CT TN-74 URETHANE 2.0-3.0 MILS TDFT 5.0-8.0 MILS		SPECIAL INSTRUCTIONS PLUG TIGHT WRENCH PLUG TIGHT WITH PIPE DOPE ON THREADS AND TESTED LEAK FREE.		APPROXIMATE SHIPPING WEIGHT: 8,120 LBS.		DRW BY REV No 1
AceSkidLite II - 4,000 GALLON		SECONDARY TANK SHELL: 10 GAUGE (9/64") HEAD: 6 GAUGE (3/16")		INTERIOR: BARE STEEL		TANK VENT CAPACITY 288,000 PRIMARY TANK 288,000 SECONDARY TANK		SHEET 2		OF		
ACE PART No. AC04000U2K4 QTY: 1		(F:111)ACSHOPISKIDIU2K4I04000I2-ORTHO.GCD-1:48)		JOB ID No. - ACE HOUSE PAPER No. - ENG. FILE No. -		01-01-02 SUPERCEDES 09-01-01						



BILL OF MATERIAL

ITEM	QTY	NAME	DESCRIPTION	MATL	PART No.	NOTES
1	2	SKID BEAM	W6 X 9 X 230" LONG	A36	-	MOUNT, COAT
2	3	SKID STIFFENER	4" SCH. 40 PIPE X 54 1/4" LONG	A36	-	MOUNT, COAT
3	-	SKID CAP	PLATE	-	-	SEE DTL SHT
4	-	TOW EYE	-	-	-	SEE DTL SHT
5	-	SEISMIC HOLD DOWN	PLATE	-	-	SEE DTL SHT

NOTE:
1. ALL NOMINAL DIMENSIONS ARE 2"±



TOP VIEW

Acetank
& EQUIPMENT
P.O. Box 9039
Seattle, WA 98109-0039

TOLERANCES	
OVERALL LENGTH	-1/4" / +1/4"
OVERALL WIDTH	-1/4" / +1/4"
OVERALL HEIGHT	-1/4" / +1/4"
OTHER DIMENSIONS	-1/8" / +1/8"

JOB ID No.	ACE HOUSE PAPER No.	ENGG. FILE No.	QUANTITY	PART NAME	ACE PART No.
-	-	-	1	SKID DETAILS	AC04000U2K4
					(1:24)

No.	DRAWING / REVISION	DRAWN BY	CHECKED BY	SHEET
1	1ST SUBMITTAL	-	-	OF
-	-	-	-	-
-	-	-	-	-
4-10-01 SUPERCEDES				