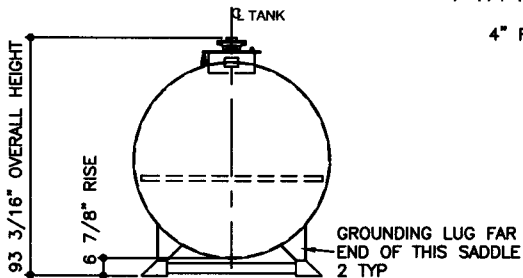
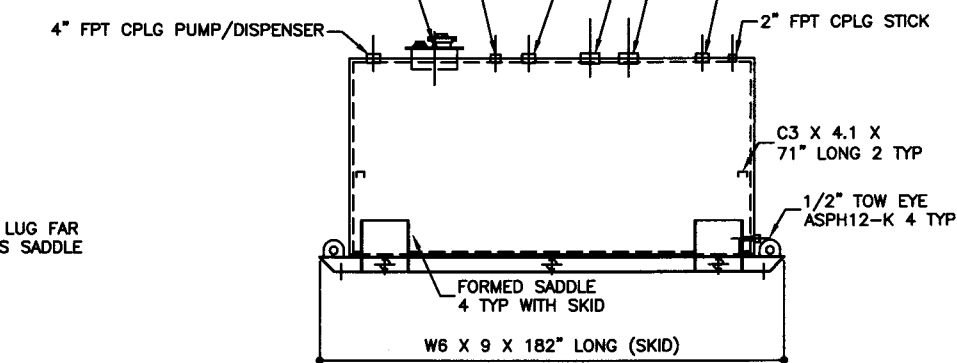


TOP VIEW

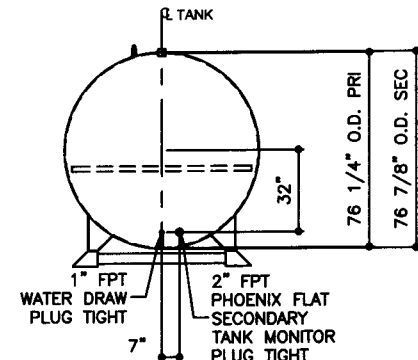
- 3" FPT CPLG NORMAL VENT/STAGE 1 VAPOR RECOVERY
- 4" FPT CPLG SPARE/STAGE 2 VAPOR RECOVERY
- 18" ID PRODUCT FILL MANHOLE
- 3" FPT FULL CPLG LOWFILL OPENING
- 3/4" FPT FULL CPLG RETURN
- 4" FPT PHOENIX FLAT INSPECTION OPENING
- 4" FPT CPLG PUMP/DISPENSER
- 6" FPT CPLG PRIMARY EMERGENCY VENT
- 6" FPT CPLG SECONDARY EMERGENCY VENT
- 4" FPT CPLG GAUGE
- 2" FPT CPLG STICK



ELEVATION - END VIEW



ELEVATION - SIDE VIEW



ELEVATION - END VIEW

TOLERANCES	
TANK	
CAPACITY	-0% / +10
OVERALL LENGTH	-0" / +2"
OVERALL WIDTH	-0" / +1"
OVERALL HEIGHT	-1/2" / +1/2"
OTHER DIMENSIONS	-1/4" / +1/4"

UL 142 (BUILT & LABELED)  
 HOLDDOWNS ARE SEISMIC RATED  
 DOUBLE WALL TANK  
 SKID TANK

STEEL: ASTM A36  
 PRIMARY TANK  
 SHELL: 6 GAUGE (3/16")  
 HEAD: 6 GAUGE (3/16")

COATING:  
 "R" EXTERIOR COATING, ACE 1A  
 RED SHOP COAT 1-3 MILS

SPECIAL INSTRUCTIONS  
 PLUG TIGHT  
 WRENCH PLUG TIGHT WITH PIPE DOPE  
 ON THREADS AND TESTED LEAK FREE.

APPROXIMATE SHIPPING WEIGHT  
 5,510 LBS.

DRW BY

REV No

SHEET

OF



AceSkidLite II - 3,000 GALLON

ACE PART No. AC03000U2K4

QTY: 1

SECONDARY TANK  
 SHELL: 10 GAUGE (9/64")  
 HEAD: 6 GAUGE (3/16")

INTERIOR:  
 BARE STEEL

TANK VENT CAPACITY  
 239,000 PRIMARY TANK

239,000 SECONDARY TANK

JOB ID No. ACE HOUSE PAPER No. ENG. FILE No.

01-01-02 SUPERCEDES 09-01-01

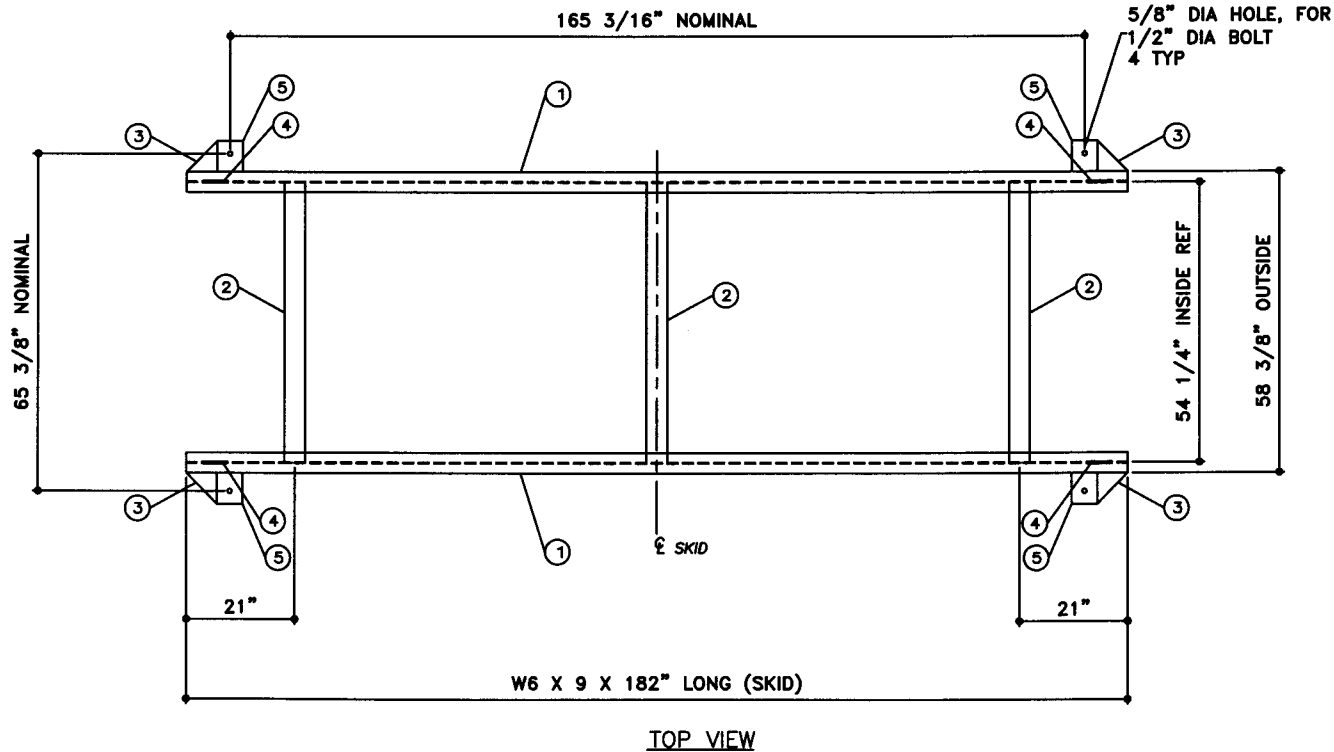
(F:111)ACSHOP\SKIDU2K4\0300012-ORTHO.GCD-1:48)

COPYRIGHT 1997 ACE TANK & EQUIPMENT

# BILL OF MATERIAL

ITEM	QTY	NAME	DESCRIPTION	MATL	PART No.	NOTES
1	2	SKID BEAM	W6 X 9 X 182" LONG	A36	-	MOUNT, COAT
2	3	SKID STIFFENER	4" SCH. 40 PIPE X 54 1/4" LONG	A36	-	MOUNT, COAT
3	-	SKID CAP	PLATE	-	-	SEE DTL SHT
4	-	TOW EYE	-	-	-	SEE DTL SHT
5	-	SEISMIC HOLD DOWN	PLATE	-	-	SEE DTL SHT

NOTE:  
1. ALL NOMINAL DIMENSIONS ARE 2"±



JOB ID No.	TOLERANCES
-	SKID
ACE HOUSE PAPER No.	OVERALL LENGTH -1/4" / +1/4"
ENG. FILE No.	OVERALL WIDTH -1/4" / +1/4"
-	OVERALL HEIGHT -1/4" / +1/4"
-	OTHER DIMENSIONS -1/8" / +1/8"

QUANTITY	PART NAME
1	SKID DETAILS
-	-
-	ACE PART No. AC03000U2K4
-	(1:24)

No.	DRAWING / REVISION	DRAWN BY	CHECKED BY	SHEET
1	1ST SUBMITTAL	-	-	OF
-	-	-	-	-
-	-	-	-	-
-	-	-	-	-
4-10-01 SUPERCEDES				