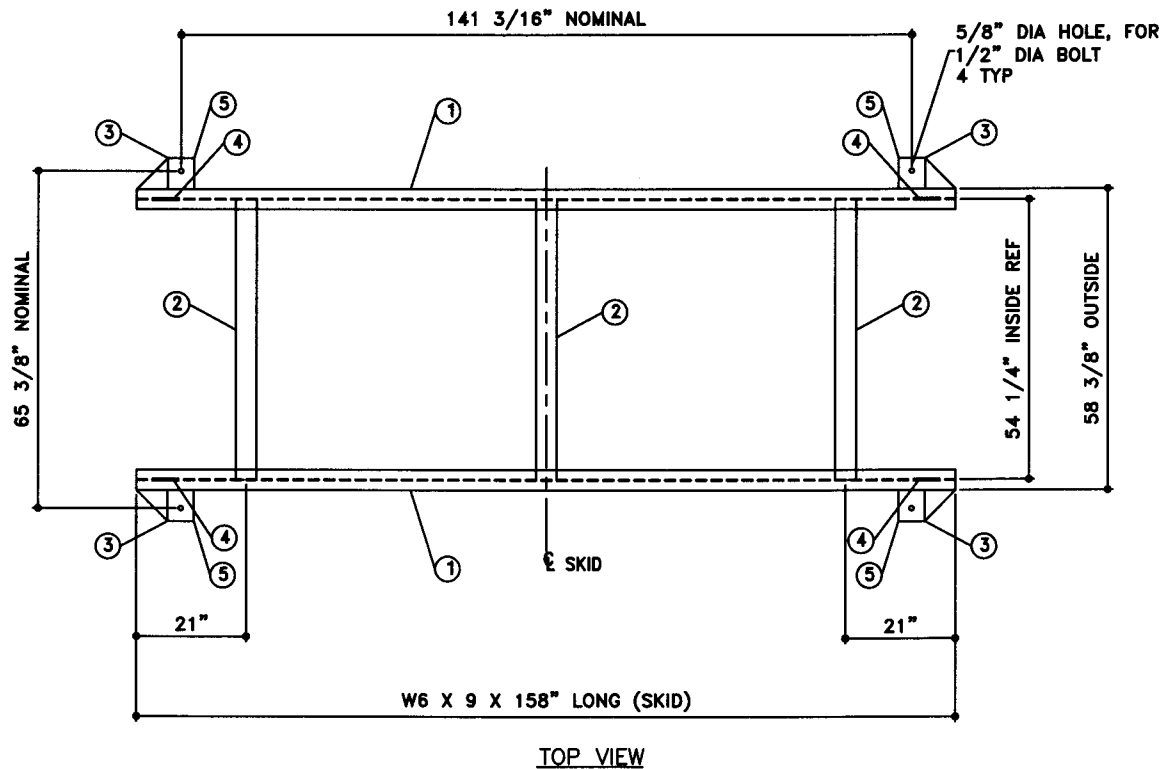


TOLERANCES TANK CAPACITY -0% / +10 OVERALL LENGTH -0" / +2" OVERALL WIDTH -0" / +1" OVERALL HEIGHT -1/2" / +1/2" OTHER DIMENSIONS -1/4" / +1/4"		UL 142 (BUILT & LABELED) HOLDDOWNS ARE SEISMIC RATED DOUBLE WALL TANK SKID TANK		STEEL: ASTM A36 PRIMARY TANK SHELL: 6 GAUGE (3/16") HEAD: 6 GAUGE (3/16")		COATING: "R" EXTERIOR COATING, ACE 1A RED SHOP COAT 1-3 MILS "A" EXTERIOR ACE 3A COATING: SP-6 GRIT BLAST 3A COLOR: #WH01 (WHITE) 1 CT TN-161 EPOXY 3.0-5.0 MILS 1 CT TN-74 URETHANE 2.0-3.0 MILS TDFT 5.0-8.0 MILS		SPECIAL INSTRUCTIONS PLUG TIGHT WRENCH PLUG TIGHT WITH PIPE DOPE ON THREADS AND TESTED LEAK FREE.		APPROXIMATE SHIPPING WEIGHT 4,940 LBS. TANK VENT CAPACITY 239,000 PRIMARY TANK 239,000 SECONDARY TANK		DRAW BY - REV No 1 SHEET 2 OF -
1-206-281-5000 		AceSkidLite II - 2,500 GALLON ACE PART No. AC02500U2K4 QTY: 1 (F:111TACSHOPISKIDIU2K4I0250012-ORTHO.GCD-1:48)		SECONDARY TANK SHELL: 10 GAUGE (9/64") HEAD: 6 GAUGE (3/16")		INTERIOR: BARE STEEL		TANK VENT CAPACITY 239,000 PRIMARY TANK 239,000 SECONDARY TANK		JOB ID No. ACE HOUSE PAPER No. ENG. FILE No. - - - 01-01-02 SUPERCEDES 09-01-01		

BILL OF MATERIAL

ITEM	QTY	NAME	DESCRIPTION	MATL	PART No.	NOTES
1	2	SKID BEAM	W6 X 9 X 158" LONG	A36	-	MOUNT, COAT
2	3	SKID STIFFENER	4" SCH. 40 PIPE X 54 1/4" LONG	A36	-	MOUNT, COAT
3	-	SKID CAP	PLATE	-	-	SEE DTL SHT
4	-	TOW EYE	-	-	-	SEE DTL SHT
5	-	SEISMIC HOLD DOWN	PLATE	-	-	SEE DTL SHT

NOTE:
1. ALL NOMINAL DIMENSIONS ARE 2"±



JOB ID No.	TOLERANCES	QUANTITY
-	SKID	1
ACE HOUSE PAPER No.	OVERALL LENGTH -1/4" / +1/4"	
-	OVERALL WIDTH -1/4" / +1/4"	
ENGG. FILE No.	OVERALL HEIGHT -1/4" / +1/4"	
-	OTHER DIMENSIONS -1/8" / +1/8"	

PART NAME	QUANTITY
SKID DETAILS	1
ACE PART No.	AC02500U2K4
(1:24)	

No.	DRAWING / REVISION	DRAWN BY	CHECKED BY	SHEET
1	1ST SUBMITTAL	-	-	OF
-	-	-	-	
-	-	-	-	
-	-	-	-	
-	-	-	-	
4-10-01 SUPERCEDES				