

TOLERANCES	
TANK	
CAPACITY	-0% / +10
OVERALL LENGTH	-0' / +2"
OVERALL WIDTH	-0' / +1"
OVERALL HEIGHT	-1/2" / +1/2"
OTHER DIMENSIONS	-1/4" / +1/4"

UL 142 (BUILT & LABELED)
 HOLDDOWNS ARE SEISMIC RATED
 DOUBLE WALL
 SKID TANK

STEEL: ASTM A36
 PRIMARY TANK
 SHELL: 2 GAUGE (1/4")
 HEAD: 2 GAUGE (1/4")

COATING:
 "R" EXTERIOR COATING, ACE 1A
 RED SHOP COAT 1-3 MILS
 "A" EXTERIOR ACE 3A COATING:
 SP-6 GRIT BLAST
 3A COLOR: #WH01 (WHITE)
 1 CT TN-161 EPOXY 3.0-5.0 MILS
 1 CT TN-74 URETHANE 2.0-3.0 MILS
 TDFE 5.0-8.0 MILS

SPECIAL INSTRUCTIONS
 PLUG TIGHT
 WRENCH PLUG TIGHT WITH PIPE DOPE ON THREADS AND TESTED LEAK FREE.
 STIFFENERS ARE NOT SHOWN IN ELEVATION VIEWS FOR CLARITY

APPROXIMATE SHIPPING WEIGHT:	27,750 LBS.
TANK VENT CAPACITY	524,000 PRIMARY TANK
	524,000 SECONDARY TANK
JOB ID No.	ACE HOUSE PAPER No.
ENG. FILE No.	



AceSkidLite II - 20,000 GALLON

ACE PART No. **AC20000U2K4** QTY: 1

(F:111ACSHOPISKIDIU2K4\20000\2-ORTH.GCD-1:64)

SECONDARY TANK
 SHELL: 6 GAUGE (3/16")
 HEAD: 2 GAUGE (1/4")

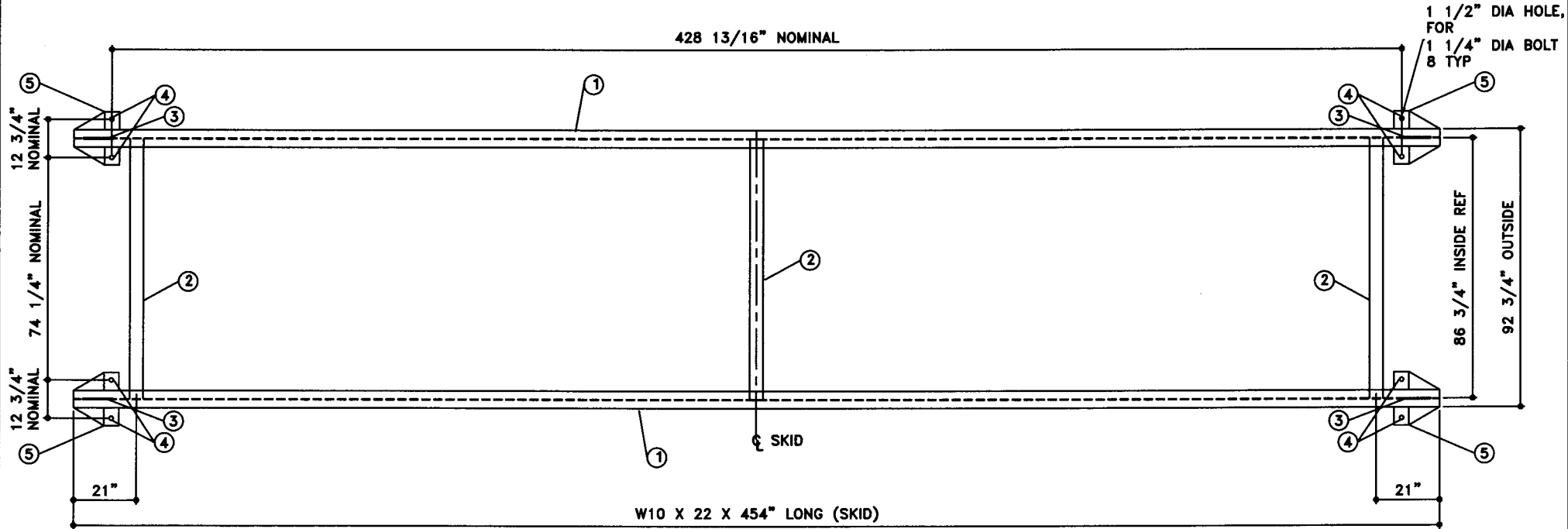
INTERIOR:
 BARE STEEL

DRW BY	-
REV No	1
SHEET	2
OF	
01-01-02 SUPERCEDES 09-01-01	

NOTE:
1. ALL NOMINAL DIMENSIONS ARE 3"±

BILL OF MATERIAL

ITEM	QTY	NAME	DESCRIPTION	MATL	PART No.	NOTES
1	2	SKID	W10 X 22 X 454" LONG	A36	-	MOUNT, COAT
2	3	BRACE	4" SCH. 40 PIPE X 86 3/4" LONG	A36	-	MOUNT, COAT
3	-	TOW EYE	TYPE 2 LIFT LUG	A36	-	SEE DTL SHT
4	-	HOLDDOWN	-	A36	-	SEE DTL SHT
5	-	SKID CAP	-	A36	-	SEE DTL SHT



TOP VIEW

JOB ID No.	TOLERANCES
-	SKID
ACE HOUSE PAPER No.	OVERALL LENGTH -1/4" / +1/4"
-	OVERALL WIDTH -1/4" / +1/4"
ENGG. FILE No.	OVERALL HEIGHT -1/4" / +1/4"
-	OTHER DIMENSIONS -1/8" / +1/8"

QUANTITY	PART NAME
1	SKID DETAILS
	ACE PART No. AC20000U2K4
	(1:32)

No.	DRAWING / REVISION	DRAWN BY	CHECKED BY	SHEET
1	1ST SUBMITTAL	-	-	OF
-	-	-	-	-
-	-	-	-	-
-	-	-	-	-
01-01-01 SUPERCEDES				