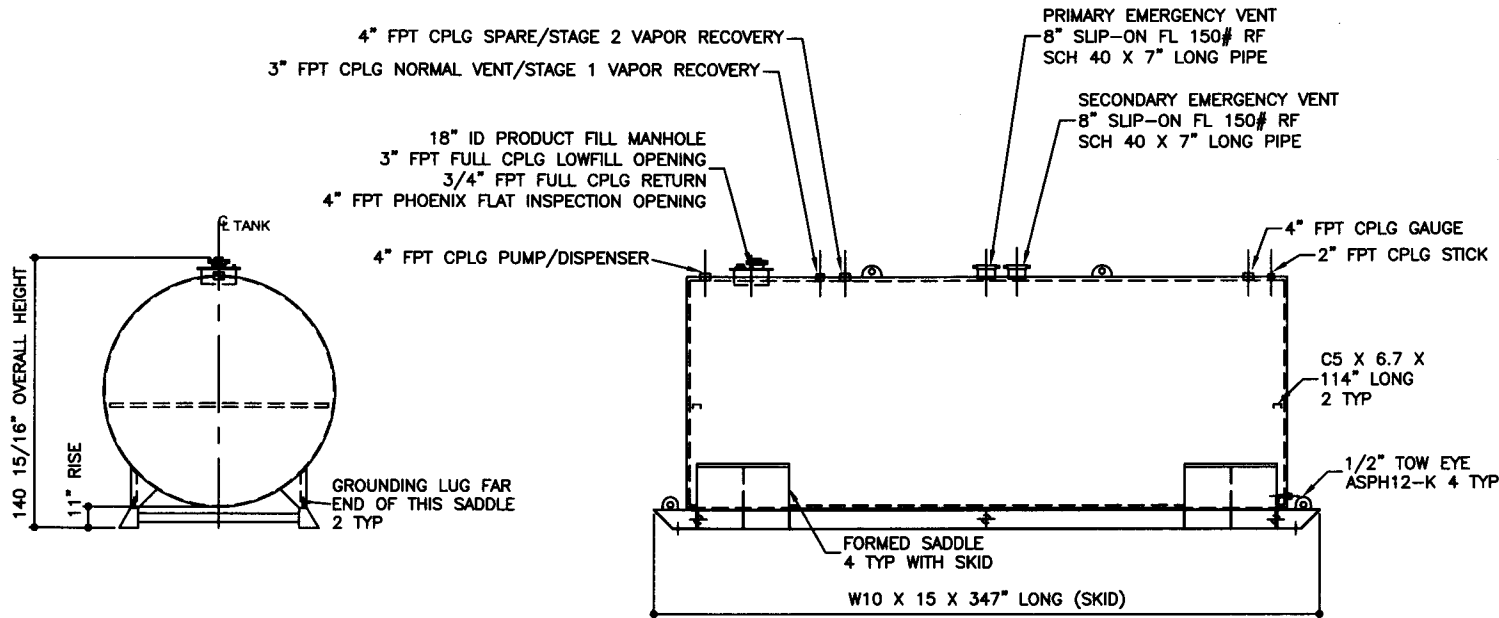
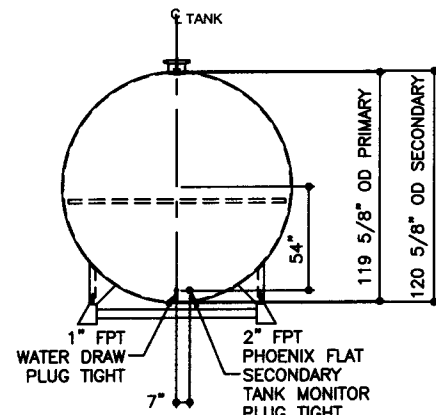


TOP VIEW



ELEVATION - END VIEW

ELEVATION - SIDE VIEW



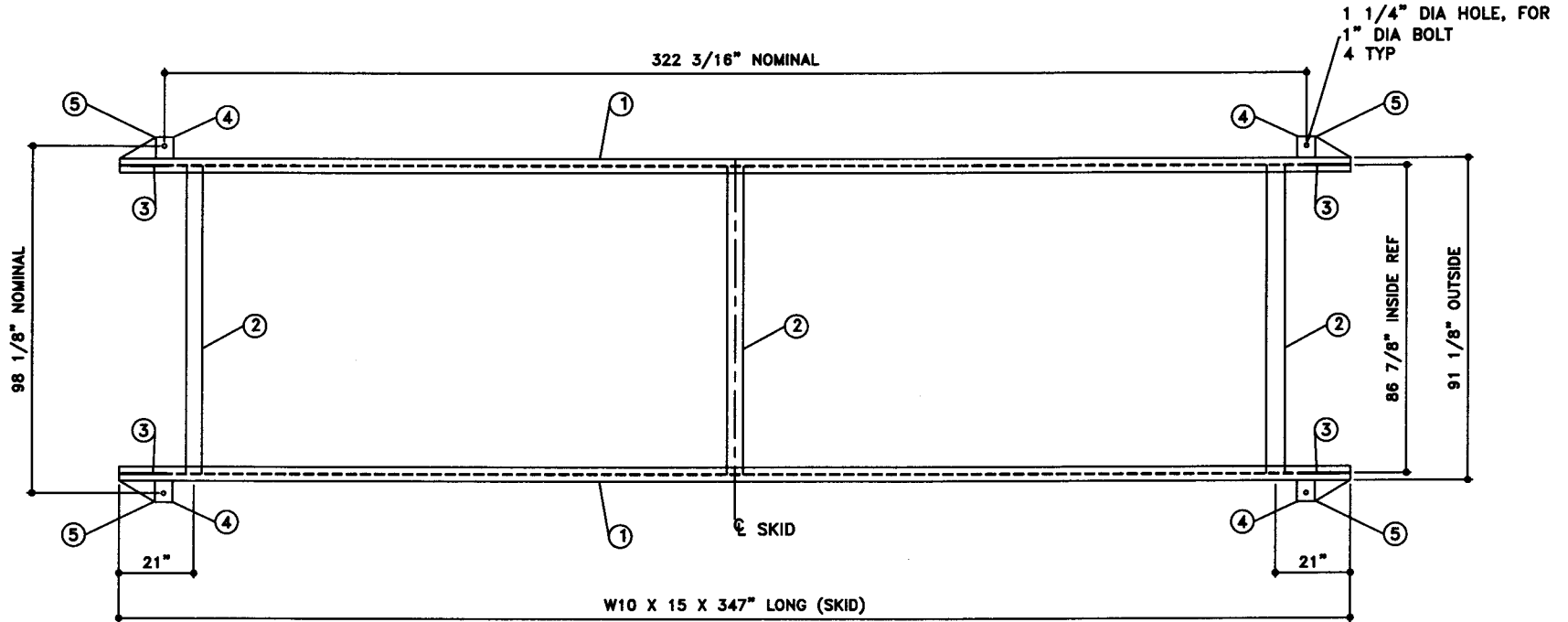
ELEVATION - END VIEW

TOLERANCES TANK CAPACITY -0% / +10 OVERALL LENGTH -0" / +2" OVERALL WIDTH -0" / +1" OVERALL HEIGHT -1/2" / +1/2" OTHER DIMENSIONS -1/4" / +1/4"		UL 142 (BUILT & LABELED) HOLDDOWNS ARE SEISMIC RATED DOUBLE WALL TANK SKID TANK		STEEL: ASTM A36 PRIMARY TANK: SHELL: 2 GAUGE (1/4") HEAD: 2 GAUGE (1/4")		COATING: "R" EXTERIOR COATING, ACE 1A RED SHOP COAT 1-3 MILS "A" EXTERIOR ACE 3A COATING: SP-6 GRIT BLAST 3A COLOR: #WH01 (WHITE) 1 CT TN-161 EPOXY 3.0-5.0 MILS 1 CT TN-74 URETHANE 2.0-3.0 MILS TDFT 5.0-8.0 MILS		SPECIAL INSTRUCTIONS PLUG TIGHT WRENCH PLUG TIGHT WITH PIPE DOPE ON THREADS AND TESTED LEAK FREE.		APPROXIMATE SHIPPING WEIGHT 20,830 LBS. TANK VENT CAPACITY 462,000 PRIMARY TANK 462,000 SECONDARY TANK		DRW BY - REV NO 1 SHEET 2 OF	
1-206-281-5000 Acetank & EQUIPMENT COPYRIGHT 1987 ACE TANK & EQUIPMENT		AceSkidLite II - 15,000 GALLON		SECONDARY TANK: SHELL: 6 GAUGE (3/16") HEAD: 2 GAUGE (1/4")		INTERIOR: BARE STEEL		JOB ID No. - ACE HOUSE PAPER No. - ENG. FILE No. - 01-01-02 SUPERCEDES 09-01-01		AC15000U2K4 QTY: 1			
(F:111ACSHOPIKIDU2K411500012-ORTHO.DWG-1.64)													

NOTE:
1. ALL NOMINAL DIMENSIONS ARE 3"±

BILL OF MATERIAL

ITEM	QTY	NAME	DESCRIPTION	MATL	PART No.	NOTES
1	2	SKID	W10 X 15 X 347" LONG	A36	-	-
2	3	SKID CROSS BRACE	4" SCH. 40 PIPE X 86 7/8" LONG	A36	-	-
3	4	TOW EYE	TYPE 2 LIFT LUG	A36	-	SEE DTL SHT
4	4	HOLDDOWN	-	A36	-	SEE DTL SHT
5	4	SKID CAP	-	A36	-	SEE DTL SHT



TOP VIEW

JOB ID No.	TOLERANCES
-	SKID
ACE HOUSE PAPER No.	OVERALL LENGTH -1/4" / +1/4"
-	OVERALL WIDTH -1/4" / +1/4"
ENGG. FILE No.	OVERALL HEIGHT -1/4" / +1/4"
-	OTHER DIMENSIONS -1/8" / +1/8"

QUANTITY	PART NAME
1	SKID DETAILS
-	-
-	ACE PART No. AC15000U2K4
(1:32)	

No.	DRAWING / REVISION	DRAWN BY	CHECKED BY	SHEET
1	1ST SUBMITTAL	-	-	OF
-	-	-	-	
-	-	-	-	
-	-	-	-	
01-01-01 SUPERCEDES				