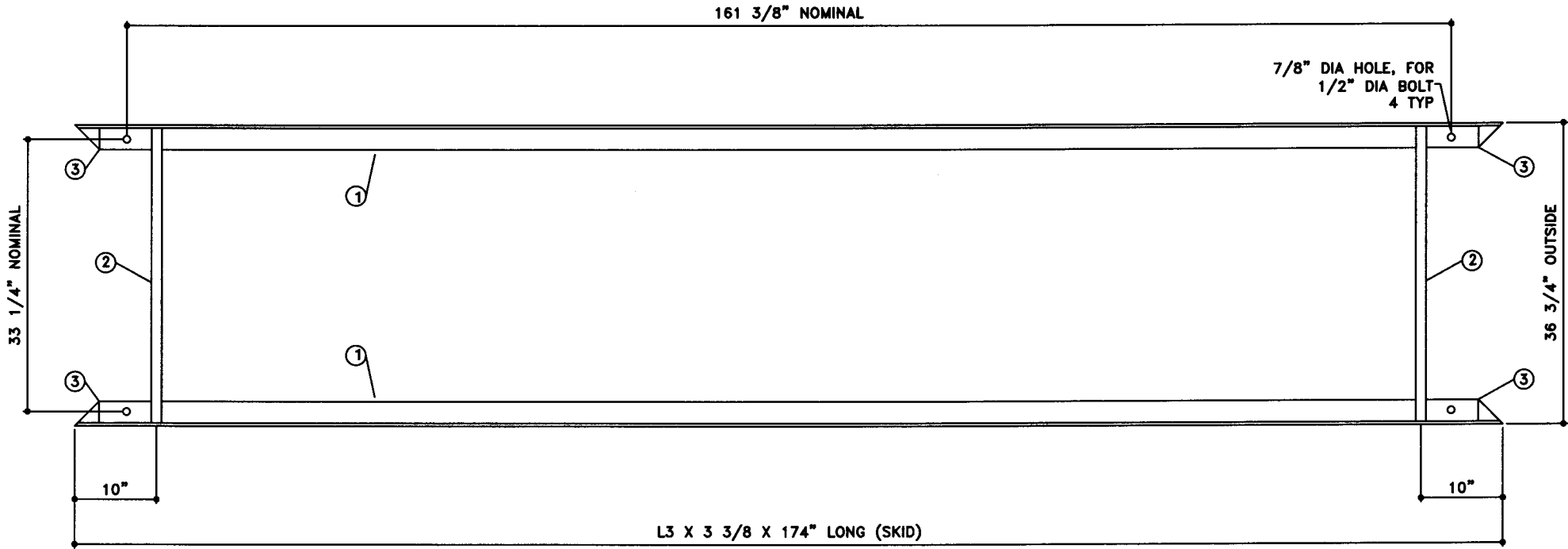


TOLERANCES TANK CAPACITY -0% / +10 OVERALL LENGTH -0" / +2" OVERALL WIDTH -0" / +1" OVERALL HEIGHT -1/2" / +1/2" OTHER DIMENSIONS -1/4" / +1/4"		UL 142 (BUILT & LABELED) HOLDDOWNS ARE SEISMIC RATED DOUBLE WALL TANK SKID TANK		STEEL: ASTM A36 PRIMARY TANK SHELL: 10 GAUGE (9/64") HEAD: 10 GAUGE (9/64")		COATING: "R" EXTERIOR COATING, ACE 1A RED SHOP COAT 1-3 MILS "A" EXTERIOR ACE 3A COATING: SP-6 GRIT BLAST 3A COLOR: #WH01 (WHITE) 1 CT TN-161 EPOXY 3.0-5.0 MILS 1 CT TN-74 URETHANE 2.0-3.0 MILS TDFT 5.0-8.0 MILS		SPECIAL INSTRUCTIONS PLUG TIGHT WRENCH PLUG TIGHT WITH PIPE DOPE ON THREADS AND TESTED LEAK FREE.		APPROXIMATE SHIPPING WEIGHT 2,320 LBS.		DRW BY - REV NO 1
1-206-281-5000 		AceSkidLite II - 1,100 GALLON		SECONDARY TANK SHELL: 12 GAUGE (7/64") HEAD: 10 GAUGE (9/64")		INTERIOR: BARE STEEL		TANK VENT CAPACITY 147,000 PRIMARY TANK 147,000 SECONDARY TANK		SHEET 2		
ACE PART No. AC01100U2K4 QTY: 1		(F:11)1ACSHOPISKIDU2K412-2ORTH.GCD-1:32)						JOB ID No. - ACE HOUSE PAPER No. - ENG. FILE No. -		OF 04-01-02 SUPERCEDES 09-1-01		

BILL OF MATERIAL

ITEM	QTY	NAME	DESCRIPTION	MATL	PART No.	NOTES
1	2	SKID ANGLE	L3 X 3 X 3/8 X 174" LONG	A36	-	MOUNT, COAT
2	2	SKID STIFFENER	1 1/4" SCH. 40 PIPE X 36" LONG	A36	-	MOUNT, COAT
3	-	SKID CAP	PLATE	A36	-	SEE DTL SHT

NOTE:
1. ALL NOMINAL DIMENSIONS ARE 2"±



TOP VIEW

Acetank & EQUIPMENT
P.O. Box 9039
Seattle, WA 98109-0039

JOB ID No.	-	TOLERANCES
ACE HOUSE PAPER No.	-	
ENGG. FILE No.	-	
OVERALL LENGTH	-1/4" / +1/4"	
OVERALL WIDTH	-1/4" / +1/4"	
OVERALL HEIGHT	-1/4" / +1/4"	
OTHER DIMENSIONS	-1/8" / +1/8"	

QUANTITY	1	PART NAME	SKID - DETAILS	ACE PART No.	AC01100U2K4
				(1-12)	

No.	DRAWING / REVISION	DRAWN BY	CHECKED BY	SHEET
1	1ST SUBMITTAL	-	-	OF
-	-	-	-	
-	-	-	-	
-	-	-	-	
01-01-01 SUPERCEDES				