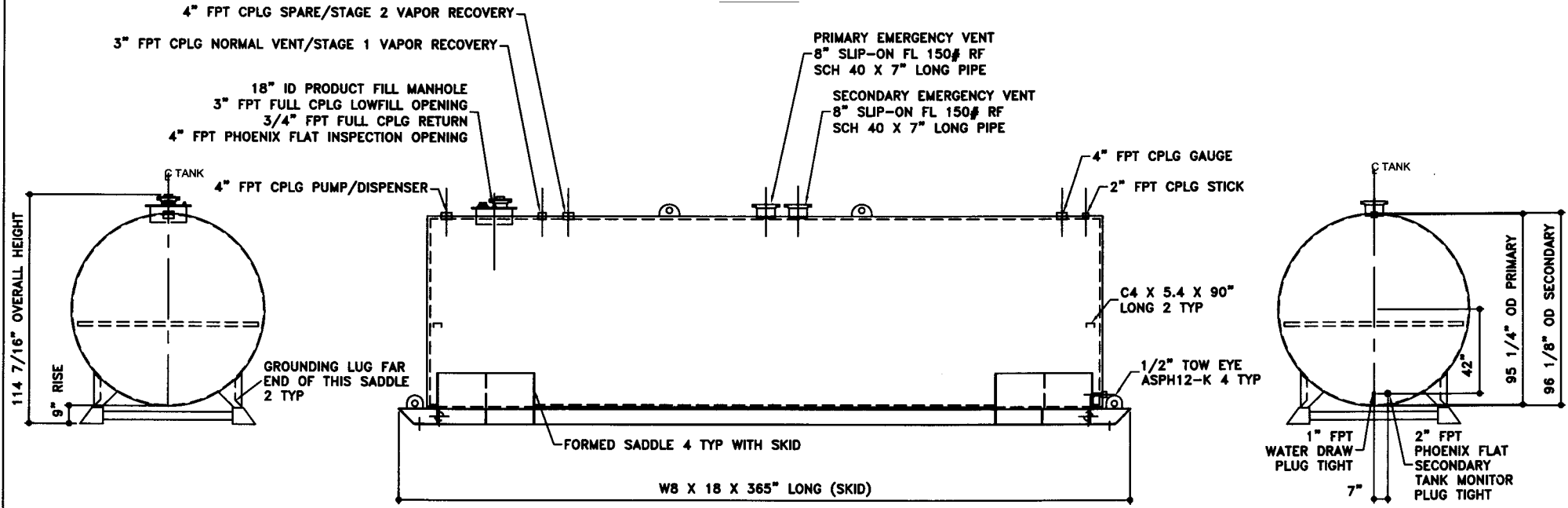


TOP VIEW



ELEVATION - END VIEW

ELEVATION - SIDE VIEW

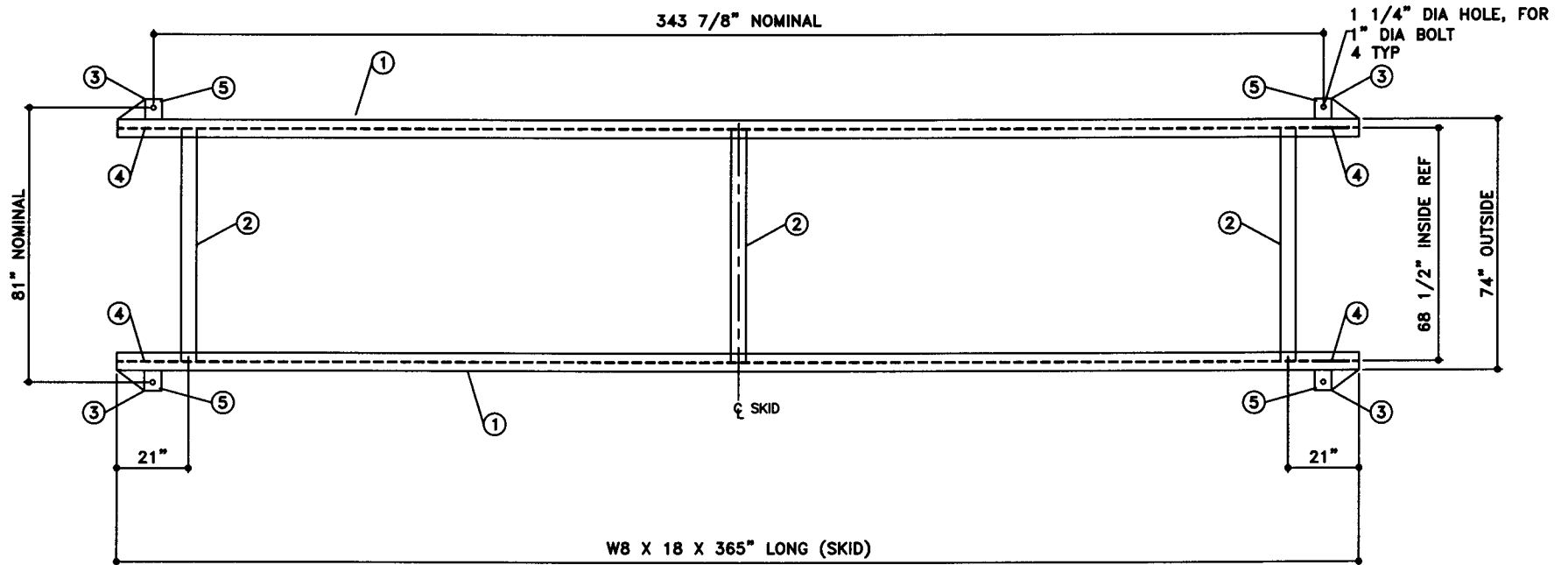
ELEVATION - END VIEW

<p>TOLERANCES TANK</p> <p>CAPACITY -0% / +10</p> <p>OVERALL LENGTH -0" / +2"</p> <p>OVERALL WIDTH -0" / +1"</p> <p>OVERALL HEIGHT -1/2" / +1/2"</p> <p>OTHER DIMENSIONS -1/4" / +1/4"</p>	<p>UL 142 (BUILT & LABELED) HOLDDOWNS ARE SEISMIC RATED DOUBLE WALL TANK SKID TANK</p>	<p>STEEL: ASTM A36 PRIMARY TANK SHELL: 2 GAUGE (1/4") HEAD: 2 GAUGE (1/4")</p>	<p>COATING: "R" EXTERIOR COATING, ACE 1A RED SHOP COAT 1-3 MILS</p> <p>"A" EXTERIOR ACE 3A COATING: SP-6 GRIT BLAST 3A COLOR: #WH01 (WHITE) 1 CT TN-161 EPOXY 3.0-5.0 MILS 1 CT TN-74 URETHANE 2.0-3.0 MILS TDFT 5.0-8.0 MILS</p>	<p>SPECIAL INSTRUCTIONS PLUG TIGHT WRENCH PLUG TIGHT WITH PIPE DOPE ON THREADS AND TESTED LEAK FREE.</p>	<p>APPROXIMATE SHIPPING WEIGHT 17,370 LBS.</p> <p>TANK VENT CAPACITY 392,000 PRIMARY TANK 392,000 SECONDARY TANK</p>	<p>DRW BY - REV No 1 SHEET 2 OF</p>
<p>1-206-281-5000 Acetank & EQUIPMENT COPYRIGHT 1997 ACE TANK & EQUIPMENT</p>	<p>AceSkidLite II - 10,000 GALLON</p> <p>ACE PART No. AC10000U2K4 QTY: 1</p>	<p>SECONDARY TANK SHELL: 6 GAUGE (3/16") HEAD: 2 GAUGE (1/4")</p>	<p>INTERIOR: BARE STEEL</p>		<p>JOB ID No. - ACE HOUSE PAPER No. - ENG. FILE No. - 01-01-02 SUPERCEDES 09-01-01</p>	

BILL OF MATERIAL

NOTE:
1. ALL NOMINAL DIMENSIONS ARE 3"±

ITEM	QTY	NAME	DESCRIPTION	MATL	PART No.	NOTES
1	2	SKID	W8 X 18 X 365" LONG	A36	-	MOUNT, COAT
2	3	SKID STIFFENER	4" SCH. 40 PIPE X 68 1/2" LONG	A36	-	MOUNT, COAT
3	-	END CAP	PLATE	-	-	SEE DTL SHT
4	-	TOW EYE	-	-	-	SEE DTL SHT
5	-	SEISMIC HOLD DOWN	PLATE	-	-	SEE DTL SHT



TOP VIEW



P.O. Box 9039
Seattle, WA 98109-0039

JOB ID No.	TOLERANCES	QUANTITY	PART NAME	No.	DRAWING / REVISION	DRAWN BY	CHECKED BY	SHEET
-	SKID	1	SKID DETAILS	1	1ST SUBMITTAL	-	-	-
ACE HOUSE PAPER No.	OVERALL LENGTH -1/4" / +1/4"							
	OVERALL WIDTH -1/4" / +1/4"							
ENG. FILE No.	OVERALL HEIGHT -1/4" / +1/4"		ACE PART No.					OF
	OTHER DIMENSIONS -1/8" / +1/8"		(1:32)					
			AC10000U2K4					
					01-01-01 SUPERCEDES			