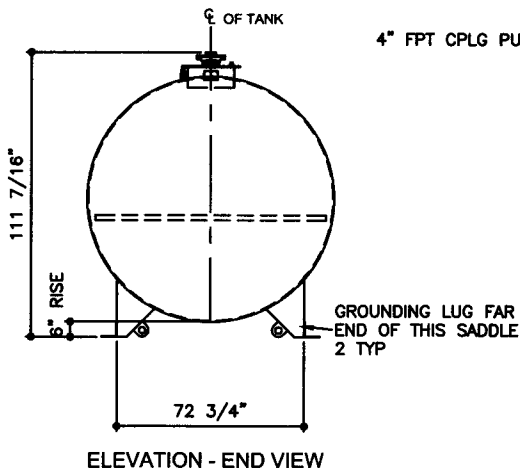
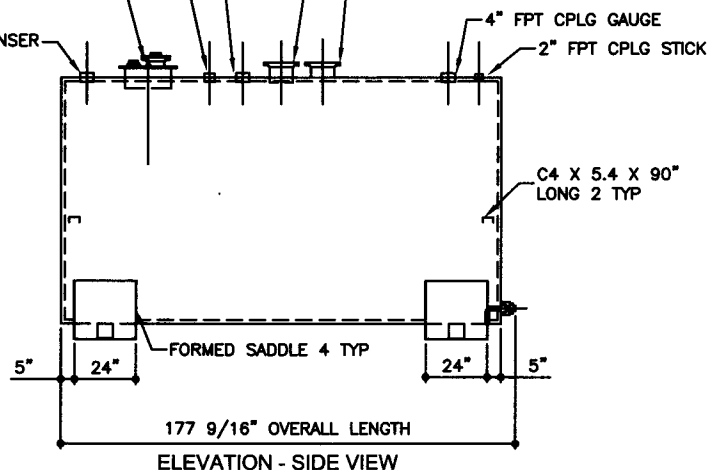


TOP VIEW

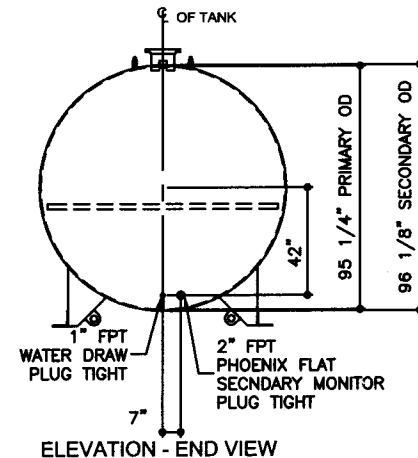
- 4" FPT CPLG SPARE/STAGE 2 VAPOR RECOVERY
- 3" FPT CPLG NORMAL VENT STAGE 1 VAPOR RECOVERY
- 18" ID PRODUCT FILL MANHOLE
- 3" FPT FULL CPLG LOWFILL OPENING
- 3/4" FPT FULL CPLG RETURN
- 4" FPT PHOENIX FLAT INSPECTION OPENING
- 4" FPT CPLG PUMP/DISPENSER
- PRIMARY EMERGENCY VENT
8" SLIP-ON FL 150# RF
SCH 40 X 7" LONG PIPE
- SECONDARY EMERGENCY VENT
8" SLIP-ON FL 150# RF
SCH 40 X 7" LONG PIPE
- 4" FPT CPLG GAUGE
- 2" FPT CPLG STICK



ELEVATION - END VIEW



ELEVATION - SIDE VIEW



ELEVATION - END VIEW

TOLERANCES

TANK	
CAPACITY	-0% / +10
OVERALL LENGTH	-0" / +2"
OVERALL WIDTH	-0" / +1"
OVERALL HEIGHT	-1/2" / +1/2"
OTHER DIMENSIONS	-1/4" / +1/4"

UL 142 (BUILT & LABELED)
HOLDDOWNS ARE SEISMIC RATED
DOUBLE WALL TANK
SADDLE TANK

STEEL: ASTM A36
PRIMARY TANK
SHELL: 2 GAUGE (1/4")
HEAD: 2 GAUGE (1/4")

COATING:
"R" EXTERIOR COATING, ACE 1A
RED SHOP COAT 1-3 MILS

SPECIAL INSTRUCTIONS
PLUG TIGHT
WRENCH PLUG TIGHT WITH PIPE DOPE
ON THREADS AND TESTED LEAK FREE.

APPROXIMATE SHIPPING WEIGHT
9,450 LBS.

DRW BY -
REV No 1

AceSaddleLite II - 5,000 GALLON

SECONDARY TANK
SHELL: 6 GAUGE (3/16")
HEAD: 2 GAUGE (1/4")

"A" EXTERIOR ACE 3A COATING:
SP-6 GRIT BLAST
3A COLOR: #WH01 (WHITE)
1 CT TN-161 EPOXY 3.0-5.0 MILS
1 CT TN-74 URETHANE 2.0-3.0 MILS
TDFT 5.0-8.0 MILS

INTERIOR:
BARE STEEL

TANK VENT CAPACITY
288,000 PRIMARY TANK

288,000 SECONDARY TANK

JOB ID No. ACE HOUSE PAPER No. ENG. FILE No.
- - -

SHEET 2
OF

ACE PART No. AC05000U2S4 QTY: 1

01-01-02 SUPERCEDES 09-01-01

(F:111ACSHOP\SADDLEU2S410500012-ORTH.GCD-1:48)

