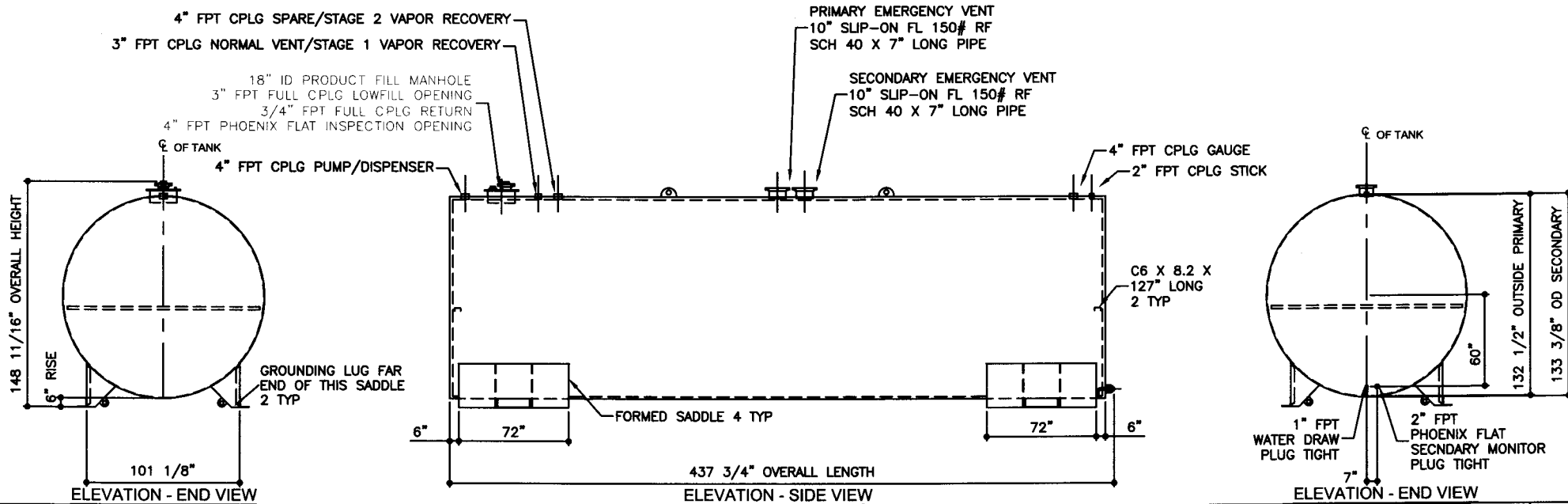


TOP VIEW



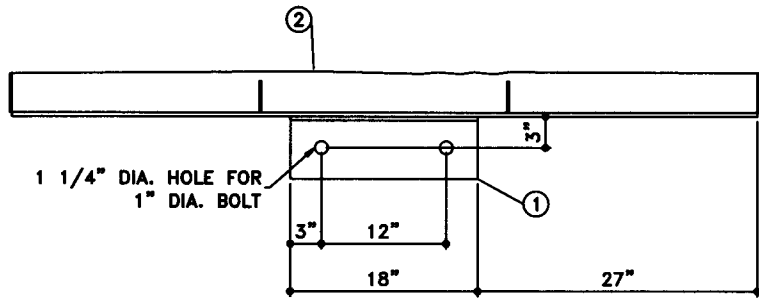
ELEVATION - END VIEW

ELEVATION - SIDE VIEW

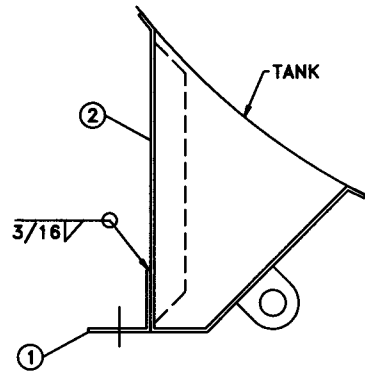
ELEVATION - END VIEW

TOLERANCES		UL 142 (BUILT & LABELED) HOLDDOWNS ARE SEISMIC RATED DOUBLE WALL TANK SADDLE TANK	STEEL: ASTM A36 PRIMARY TANK SHELL: 2 GAUGE (1/4") HEAD: 2 GAUGE (1/4")	COATING: "R" EXTERIOR COATING, ACE 1A RED SHOP COAT 1-3 MILS "A" EXTERIOR ACE 3A COATING: SP-6 GRIT BLAST 3A COLOR: #WH01 (WHITE) 1 CT TN-161 EPOXY 3.0-5.0 MILS 1 CT TN-74 URETHANE 2.0-3.0 MILS TDFT 5.0-8.0 MILS	SPECIAL INSTRUCTIONS PLUG TIGHT WRENCH PLUG TIGHT WITH PIPE DOPE ON THREADS AND TESTED LEAK FREE.	APPROXIMATE SHIPPING WEIGHT 29,840 LBS. TANK VENT CAPACITY 557,000 PRIMARY TANK 557,000 SECONDARY TANK	DRW BY
CAPACITY	-0% / +10						AceSaddleLite II - 25,000 GALLON
OVERALL LENGTH	-0" / +2"	1					
OVERALL WIDTH	-0" / +1"	ACE PART No. AC25000U2S4 QTY: 1					SHEET
OVERALL HEIGHT	-0" / +1"						2
OTHER DIMENSIONS	-1/2" / +1/2"	1-208-281-5000	(F:111ACSHOP SADDLEIU2S4 25000 2-ORTHO.GCD-1:84)				OF
	-1/4" / +1/4"						
						01-01-02 SUPERCEDES 09-01-01	





TOP VIEW

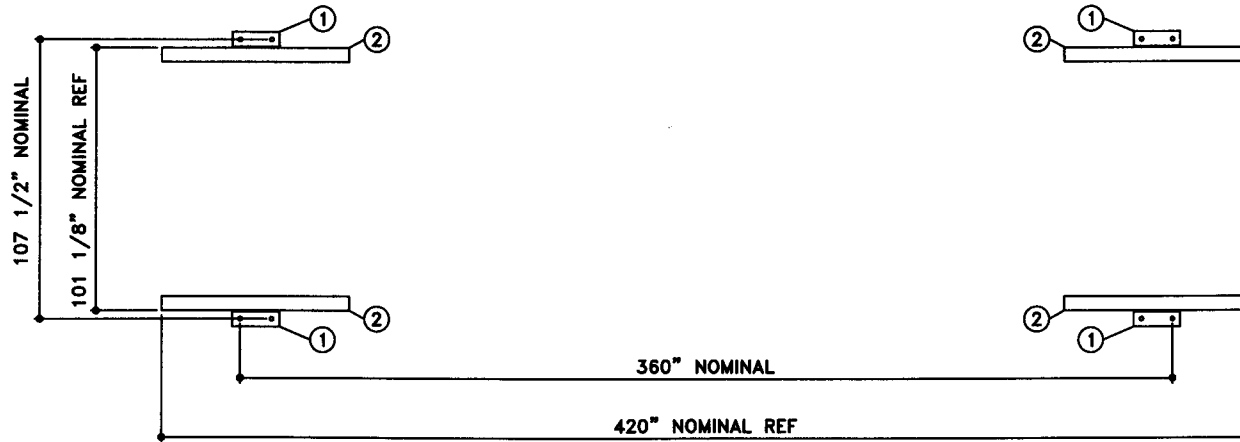


ELEVATION - END VIEW

BILL OF MATERIAL

ITEM	QTY	NAME	DESCRIPTION	MATL	PART No.	NOTES
1	4	HOLDDOWN	L6 X 6 X 3/8 X 18" LONG	A36	-	MOUNT, COAT
2	-	SADDLE	-	A36	-	SEE DTL

NOTE:
1. ALL NOMINAL DIMENSIONS ARE 3"±



HOLDDOWN - TOP VIEW



P.O. Box 9039
Seattle, WA 98109-0039

JOB ID No.	TOLERANCES	QUANTITY	PART NAME	No.	DRAWING / REVISION	DRAWN BY	CHECKED BY	SHEET
-	SEISMIC HOLDDOWN	1	SEISMIC HOLD DOWN - DETAILS	1	1ST SUBMITTAL	-	-	OF
ACE HOUSE PAPER No.	OVERALL LENGTH -1/8" / +1/8"			-	-	-	-	
-	OVERALL WIDTH -1/8" / +1/8"			-	-	-	-	
ENGR. FILE No.	OVERALL HEIGHT -1/8" / +1/8"		ACE PART No.	-	-	-	-	
-	OTHER DIMENSIONS -1/8" / +1/8"		AC25000U2S4	-	-	-	-	
			(1:12)		01-01-01 SUPERCEDES			