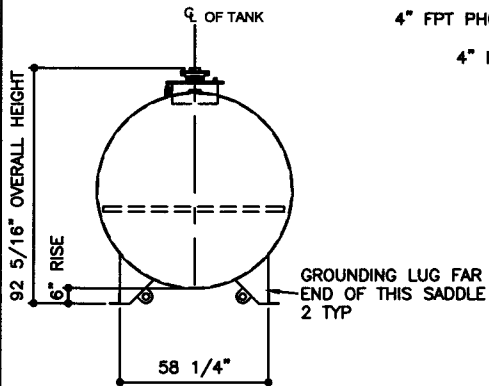
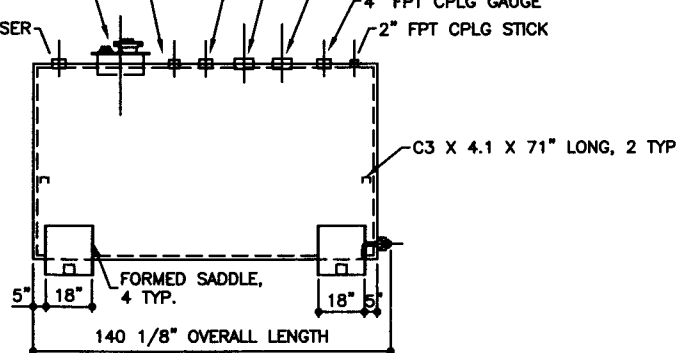


TOP VIEW

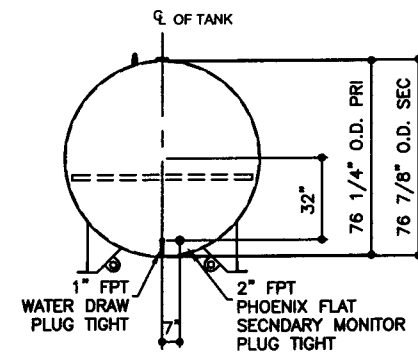
- 3" FPT CPLG NORML VENT / STAGE 1, VAPOR RECOVERY
- 18" ID PRODUCT FILL MANHOLE
- 3" FPT FULL CPLG LOWFILL OPENING
- 3/4" FPT FULL CPLG RETURN
- 4" FPT PHOENIX FLAT INSPECTION OPENING
- 4" FPT CPLG PUMP/DISPENSER
- 4" FPT CPLG SPARE / STAGE 2, VAPOR RECOVERY
- 6" FPT CPLG PRIMARY TANK, EMERGENCY VENT
- 6" FPT CPLG SECONDARY TANK, EMERGENCY VENT
- 4" FPT CPLG GAUGE
- 2" FPT CPLG STICK



ELEVATION - END VIEW



ELEVATION - SIDE VIEW



ELEVATION - END VIEW

TOLERANCES		STEEL: ASTM A36		COATING:		SPECIAL INSTRUCTIONS		APPROXIMATE SHIPPING WEIGHT		DRW BY
TANK		PRIMARY TANK		"R" EXTERIOR COATING, ACE 1A RED SHOP COAT 1-3 MILS		PLUG TIGHT WRENCH PLUG TIGHT WITH PIPE DOPE ON THREADS AND TESTED LEAK FREE.		4,640 LBS.		-
CAPACITY	-0% / +10	SHELL: 6 GAUGE (3/16")		"A" EXTERIOR ACE 3A COATING:				TANK VENT CAPACITY		1
OVERALL LENGTH	-0" / +2"	HEAD: 6 GAUGE (3/16")		SP-6 GRIT BLAST				239,000 PRIMARY TANK		
OVERALL WIDTH	-0" / +1"	SECONDARY TANK		3A COLOR: #WH01 (WHITE)				239,000 SECONDARY TANK		2
OVERALL HEIGHT	-1/2" / +1/2"	SHELL: 10 GAUGE (9/64")		1 CT TN-181 EPOXY 3.0-5.0 MILS						
OTHER DIMENSIONS	-1/4" / +1/4"	HEAD: 6 GAUGE (3/16")		1 CT TN-74 URETHANE 2.0-3.0 MILS						
1-208-281-5000		ACE PART No. AC02500U2S4		TDFT 5.0-8.0 MILS						OF
AceSaddleLite II - 2,500 GALLON		QTY: 1		INTERIOR: BARE STEEL						
COPYRIGHT 1997 ACE TANK & EQUIPMENT		(F:111)ACSHOPISADDLEIU2S4102500U2-ORTHR.GCD-1:48)						JOB ID No. ACE HOUSE PAPER No. ENG. FILE No.		
								01-01-02 SUPERCEDES 09-01-01		