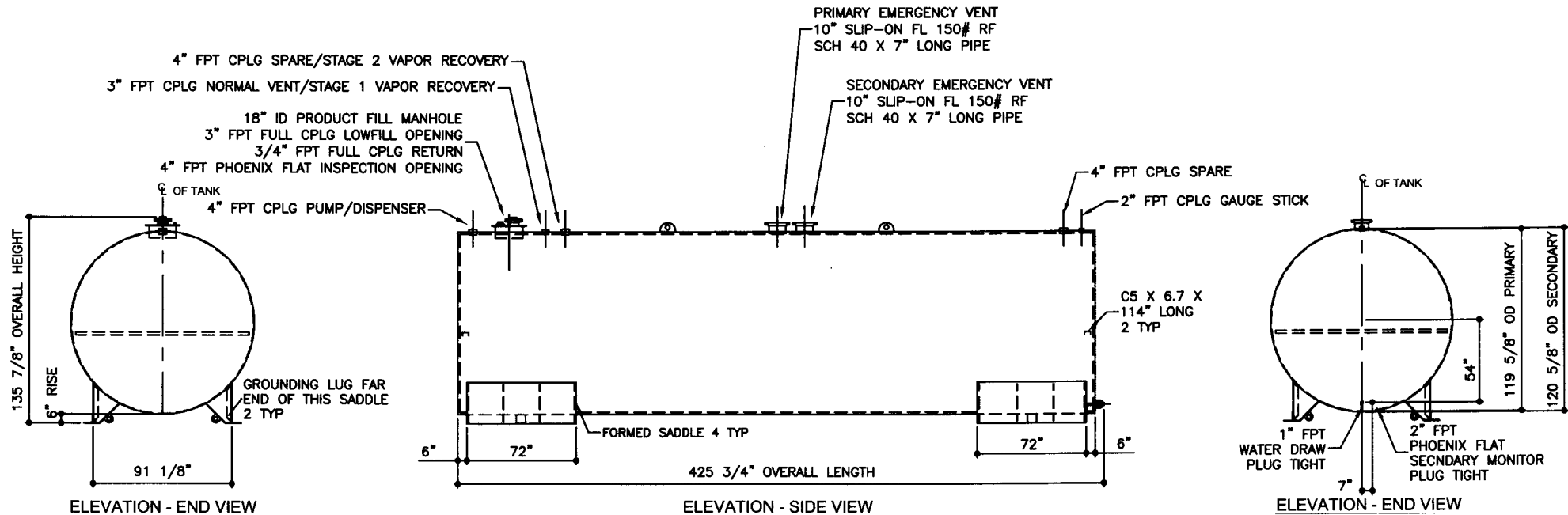


TOP VIEW



ELEVATION - END VIEW

ELEVATION - SIDE VIEW

ELEVATION - END VIEW

TOLERANCES

TANK	
CAPACITY	-0% / +10
OVERALL LENGTH	-0' / +2"
OVERALL WIDTH	-0' / +1"
OVERALL HEIGHT	-1/2" / +1/2"
OTHER DIMENSIONS	-1/4" / +1/4"

UL 142 (BUILT & LABELED)
HOLDDOWNS ARE SEISMIC RATED
DOUBLE WALL TANK
SADDLE TANK

STEEL: ASTM A36
PRIMARY TANK
SHELL: 2 GAUGE (1/4")
HEAD: 2 GAUGE (1/4")

COATING:
"R" EXTERIOR COATING, ACE 1A
RED SHOP COAT 1-3 MILS
"A" EXTERIOR ACE 3A COATING:
SP-6 GRIT BLAST
3A COLOR: #WH01 (WHITE)
1 CT TN-161 EPOXY 3.0-5.0 MILS
1 CT TN-74 URETHANE 2.0-3.0 MILS
TDFT 5.0-8.0 MILS

SPECIAL INSTRUCTIONS
PLUG TIGHT
WRENCH PLUG TIGHT WITH PIPE DOPE
ON THREADS AND TESTED LEAK FREE.

APPROXIMATE SHIPPING WEIGHT
25,870 LBS.

TANK VENT CAPACITY
524,000 PRIMARY TANK

524,000 SECONDARY TANK

JOB ID No.	ACE HOUSE PAPER No.	ENG. FILE No.
-	-	-

01-01-02 SUPERCEDES 09-01-01

DRW BY
REV No.
1
SHEET
2
OF

AcetankLite II - 20,000 GALLON

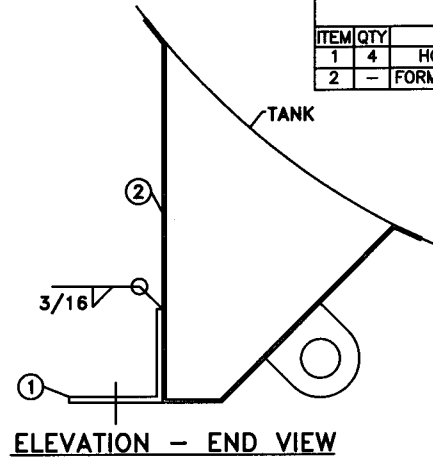
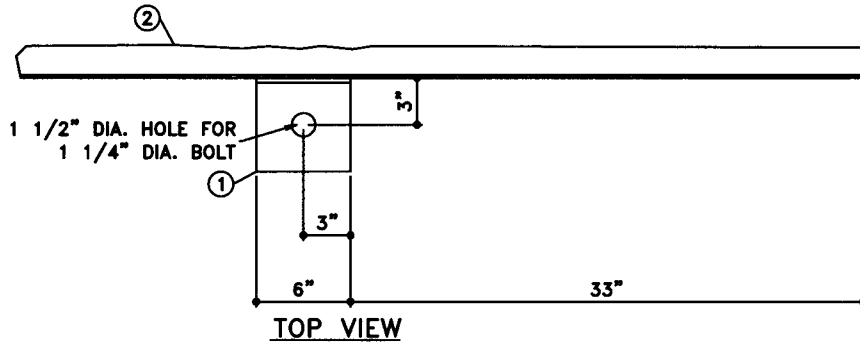
ACE PART No. AC20000U2S4 QTY: 1

(F:111ACSHOP\SADDLE\U2S4\2000012-ORTHO.GCD-1.64)

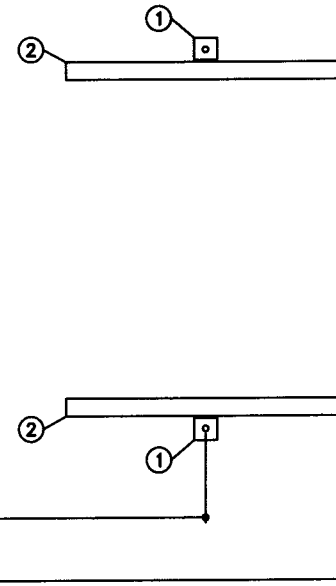
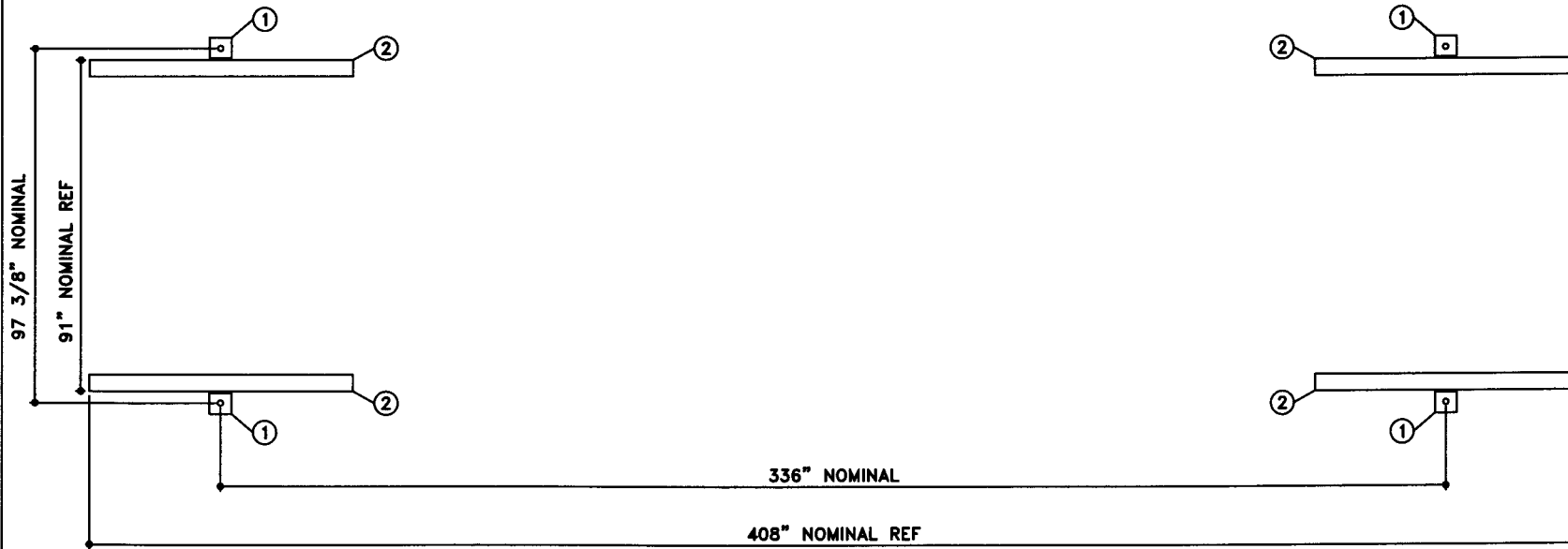


BILL OF MATERIAL

ITEM	QTY	NAME	DESCRIPTION	MATL	PART No.	NOTES
1	4	HOLDDOWN	L6 X 6 X 3/8 X 6" LONG	A36	-	MOUNT, COAT
2	-	FORMED SADDLE	-	A36	-	SEE DETAIL



NOTE:
1. ALL NOMINAL DIMENSIONS ARE 3"±



JOB ID No.	TOLERANCES	QUANTITY	PART NAME
-	HOLDDOWN	1	SEISMIC HOLDDOWN - DETAIL
ACE HOUSE PAPER No.	OVERALL LENGTH -1/16" / +1/16"		ACE PART No.
-	OVERALL WIDTH -1/16" / +1/16"		AC20000U2S4
ENGG. FILE No.	OVERALL HEIGHT -1/16" / +1/16"		(1:08)
-	OTHER DIMENSIONS -1/16" / +1/16"		

No.	DRAWING / REVISION	DRAWN BY	CHECKED BY	SHEET
1	1ST SUBMITTAL	-	-	OF
-	-	-	-	
-	-	-	-	
-	-	-	-	

01-01-01 SUPERCEDES